



since 1963

Converging
Innovations  Expanding
Solutions



Solution for
Measurement

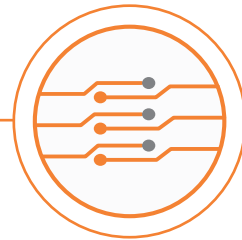


since 1963

Converging
Innovations  Expanding
Solutions



**Solutions For
Metering & Protection**



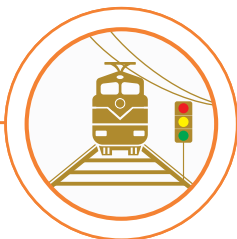
**Solutions For
Connectivity**



**Solutions For
Solar Photovoltaic**



**Solutions For
Control & Instrumentation**



**Solutions For
Railways**



**Solutions For
Oil & Gas Industry**



FEATURES / PARAMETERS		EMFM-9620	EMFM-9610	EMFM-9610L
TRMS Measurement		✓	✓	✓
Display	LED - Super Bright	✓	✓	–
	LCD - With Backlight	–	–	✓
Communication	RS 485 MODUBUS, 5KV Isolated Port	✓	✓	✓
System	3 Phase 3 Wire System	✓	✓	✓
	3 Phase 4 Wire System (Balanced / Unbalanced)	✓	✓	✓
Auxiliary Supply	85 - 265V AC / DC (Standard)	✓	✓	✓
	19 - 90V AC / DC (Optional)	✓	✓	✓
Current	I1, I2, I3, I Average	✓	✓	✓
	I12, I31, I Average	✓	✓	✓
	Neutral Current	✓	–	–
Voltage	V1N, V2N, V3N, V Average	✓	✓	✓
	V12, V23, V31, V Average	✓	–	✓
	V12, V31, V Average	✓	✓	✓
Frequency	Hz	✓	✓	✓
Active Power	W1, W2, W3, W System	✓	✓	✓
Reactive Power	VAR1, VAR2, VAR3, VAR System	✓	✓	✓
Apparent Power	VA1, VA2, VA3, VA System	✓	✓	✓
Power Factor	PF1, PF2, PF3, PF System	✓	✓	✓
Active Energy	KWh1, KWh2, KWh3, KWh Total (Import)	✓	✓	✓
	KWh1, KWh2, KWh3, KWh Total (Export)	✓	✓	✓
Reactive Energy	KVARh1, KVARh2, KVARh3, KVARh Total (Ind.)	✓	✓	✓
	KVARh1, KVARh2, KVARh3, KVARh Total (Cap.)	✓	✓	✓
Apparent Energy	KVAh1, KVAh2, KVAh3, KVAh Total	✓	✓	✓
Previous Energy	Active (Import / Export)	✓	–	–
	Reactive (Ind. / Cap.)	✓	–	–
	Apparent	✓	–	–
Energy Retention & Reset		✓	✓	✓
MAX. Demand	KW System / KVA System	✓	–	–
THD	V1, V2, V3, I1, I2, I3	✓	–	–
Scroll - Auto / Manual		✓	✓	✓
Password Protection		✓	✓	✓
Baud Rate	9.6 kbps	✓	✓	✓
Inbuilt Memory to Programme, Store And Reset For	CTR	✓	✓	✓
	PTR	✓	✓	✓
	Instrument Address	✓	✓	✓
	MD Period	✓	–	–
	Password	✓	✓	✓
Phase Angle	R, Y, B	✓	–	–
Phasor Angle	RY, YB, BR	✓	–	–
RUN Hour	Import	✓	–	–
	Export	✓	–	–
	Total (Import + Export)	✓	–	–
ON Hours		✓	–	–
Voltage	Min. Value, Max Value	✓	–	–
Current	Min. Value, Max Value	✓	–	–



FEATURES

TRMS Measurement	Built in 20 Energy Meters of 8 Digit Resolution
23 Parameter on 46 pages	Energy Retention & Password Protected Energy Reset Facility
POWER MASTER Software (Optional)	Max. Demand for KW or KVA with user Selectable Demand Interval 5-30 Minutes
RS485 Port, 5KV Isolated with MODBUS RTU (Optional)	THD for Voltage and Current
Programmable CTR, PTR, Instrument Address, Password & MD Period	Run Hours, ON Hours
Inbuilt Memory to store CTR, PTR, Instrument Address, Password & MD Period	Phase Angle & Phasor Angle Measurement
Password for Protection of Programmable Parameters	Display Previous Energies
Auto Scroll (5 Sec.) / Manual Scroll Display	Set Date & Time
Energy Import-Export (4 Quadrant Operation)	Measurement of Min. & Max. Voltage & Current Values
	CE Compliance with EN61010-1, EN61326-1



SPECIFICATIONS

Display	Super Bright LED Display of 4 Row, 4 Digit Resolution
Digit Height	0.36" / 9.2 mm
Connection	3 Ph 2E 3W / 3 Ph 3E 4W (User Selectable)
Dimensions (mm)	96 x 96 x 100
Panel Cut Out	92 ^(+0.8,-0.0) x 92 ^(+0.8,-0.0) , 90mm Depth (Behind Bezel / Panel)
Terminal Block	Plug In Type (UL94V-0)
Case / Housing Material	DIN Black ABS, Dimension as per DIN 43700
Mounting	Panel Mounting
Mounting Clamps	Sturdy, Moulded Derlin
Dielectric Strength	2.5kV at 50Hz for 1min.
Insulation Resistance	>20MΩ at 500V DC
Installation Category	Cat III (IEC/EN 61010-1)
Pollution	Degree 2 (IEC/EN 61010-1)
Environment	
Calibration	27°C ± 5°C
Operating	0 to +50°C, RH < 70%
Storage	-10 to +60°C, RH < 70%

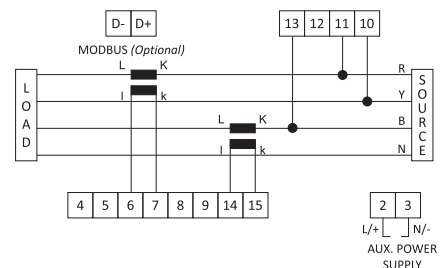
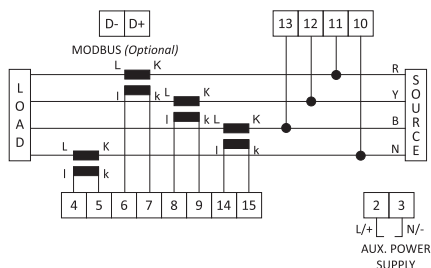
SPECIFICATIONS

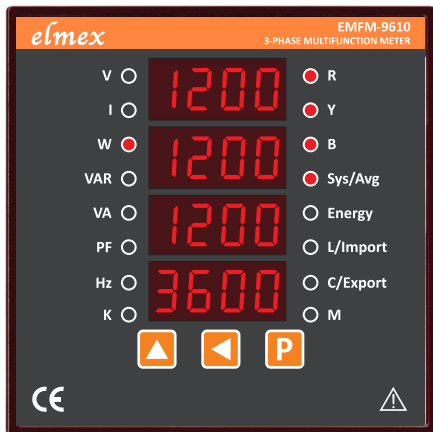
Auxiliary Supply	85-265V AC / DC (Standard) 19-90V AC / DC (Optional)	
Input Current	0.050A to 1.2A (Max.) 0.250A to 6A (Max.)	Any One
Input Voltage	51-300V AC (Max.) PH-N 88-519V AC (Max.) PH-PH 17-138V AC (Max.) PH-N 30-239V AC (Max.) PH-PH	Any One
Frequency	45 - 65 Hz	
Power Factor	0.3 (Lag) - 1 - 0.3 (Lead)	
VA (Burden)		
Auxiliary	< 2.5 VA	
Voltage Input	< 0.3 VA / Phase	
Current Input	< 0.2 VA / Phase	

Parameters Measured	Accuracy ±(FS +5Digit)	Phase	System
Voltage	± 0.5%	V1N, V2N, V3N, V12, V23, V31	V (System)
Current	± 0.5%	I1, I2, I3, NI	I (Average)
Active Power		W1, W2, W3	W (System)
Reactive Power	± 1.0%	VAR1, VAR2, VAR3	VAR (System)
Apparent Power		VA1, VA2, VA3	VA (System)
Maximum Demand	± 0.5%	W1, W2, W3, VA1, VA2, VA3	W (System), VA (System)
THD	± 5%	V1, V2, V3, I1, I2, I3	N.A.
Frequency	± 0.2Hz	N.A.	Hz (System)
Power Factor	± 1° Electrical	PF1, PF2, PF3	PF (System)
Active Energy		KWh1, KWh2, KWh3	KWh Total (Import), KWh Total (Export)
Reactive Energy	Class 1	KVARh1, KVARh2, KVARh3	KVARh Total (Ind.), KVARh Total (Cap.)
Apparent Energy		KVAh1, KVAh2, KVAh3	KVAh Total
Phase Angle	N.A.	V1V2, V1V3, V1I1, V2I2, V3I3	N.A.

Ordering Information : Model, Input Voltage, Input Current and RS485 MODBUS Communication (Optional), RS485-RS232 Converter (Optional)

TERMINAL CONNECTION





FEATURES

TRMS Measurement	Auto Scroll / Manual Scroll Display (Programmable)
10 Parameters, 48 values on 16 pages	Energy Import-Export (4 Quadrant Operation)
POWER MASTER Software (Optional)	Energy Retention
RS485 Port, 5KV Isolated with MODBUS RTU (Optional)	Password Protected Energy Reset Programmable Facility
Programmable CTR, PTR, Instrument Address, Password & Energy Reset	CE Compliance with EN61010-1, EN61326-1
Inbuilt Memory to store CTR, PTR, Instrument Address & Password	

Micro Controller Based



SPECIFICATIONS

Display	4 Rows of 4 Digit Super Bright RED LED Display
Digit Height	0.36" / 9.2 mm
Connection	3 Ph 2E 3W/3Ph 3E 4W (User Selectable)
Dimensions (mm)	96 x 96 x 55
Panel Cut Out	92 ^(+0.8,-0.0) x 92 ^(+0.8,-0.0) , 43mm Depth (Behind Bezel / Panel)
Terminals / Connectors	Tin Plated Brass Terminals and Screws
Case / Housing Material	DIN Black ABS, Dimension as per DIN 43700
Mounting	Panel Mounting
Mounting Clamps	Sturdy, Moulded Derlin
Dielectric Strength	2.5kV at 50Hz for 1min.
Insulation Resistance	>20MΩ at 500V DC
Installation Category	Cat III (IEC/EN 61010-1)
Pollution	Degree 2 (IEC/EN 61010-1)
Auxiliary Supply	85-265V AC / DC (Standard) 19-90V AC / DC (Optional)

SPECIFICATIONS

Input Current	0.03A to 1.2A (Max.) 0.11A to 6A (Max.)	Any One
Input Voltage	51-300V AC (Max.) PH-N 88-519V AC (Max.) PH-PH 16-138V AC (Max.) PH-N 28-239V AC (Max.) PH-PH	Any One
Frequency	45 - 55 Hz	
Power Factor	0.3 (Lag) - 1 - 0.3 (Lead)	
VA (Burden)		
Auxiliary	< 3 VA	
Voltage Input	< 0.3 VA/Phase	
Current Input	< 0.2 VA/Phase	
Environment		
Calibration	27°C ± 5°C	
Operating	0 to +50°C, RH < 70%	
Storage	-10 to +60°C, RH < 70%	

Parameters Measured

Accuracy ±(% FS)

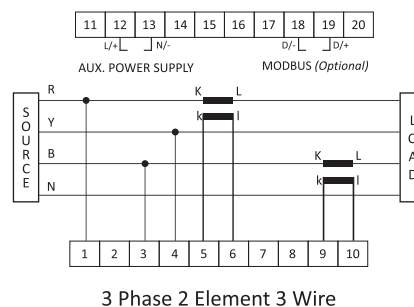
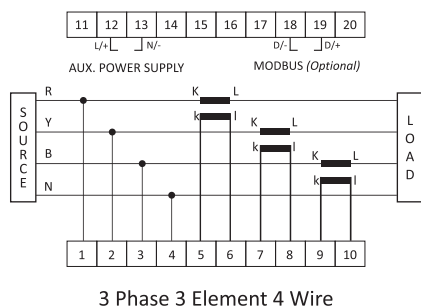
Phase

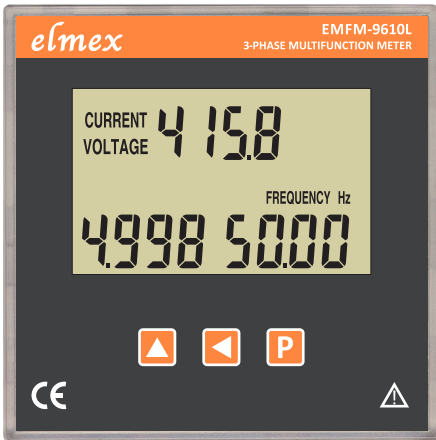
System

Voltage	± 0.5%	V1N, V2N, V3N	V (System)
Current	± 0.5%	I1, I2, I3	I (Average)
Active Power		W1, W2, W3	W (System)
Reactive Power	± 1.0%	VAR1, VAR2, VAR3	VAR (System)
Apparent Power		VA1, VA2, VA3	VA (System)
Frequency	± 0.2Hz	N.A.	Hz (System)
Power Factor	± 1° Electrical	PF1, PF2, PF3	PF (System)
Active Energy		KWh1, KWh2, KWh3	KWh Total (Import), KWh Total (Export)
Reactive Energy	Class 1	KVARh1, KVARh2, KVARh3	KVARh Total (Ind.), KVARh Total (Cap.)
Apparent Energy		KVAh1, KVAh2, KVAh3	KVAh Total

Ordering Information : Model, Input Voltage, Input Current, Auxiliary Supply & RS485 MODBUS Communication Port (Optional), RS485-RS232 Converter (Optional)

TERMINAL CONNECTION





FEATURES

TRMS Measurement	Auto Scroll / Manual Scroll Display (Programmable)
10 Parameters, 50 values on 34 pages	Energy Import - Export (4 Quadrant Operation)
POWER MASTER Software (Optional)	Energy Retention
RS485 Port, 5KV Isolated with MODBUS RTU (Optional)	Password Protected Energy Reset Programmable Facility
Programmable CTR, PTR, Instrument Address, Password & Energy Reset	CE Compliance with EN61010-1, EN61326-1
Inbuilt Memory to store CTR, PTR, Instrument Address & Password	



SPECIFICATIONS

Display	LCD With Back light
Digit Height	0.47" / 12 mm
Connection	3 Ph 2E 3W/3Ph 3E 4W (User Selectable)
Dimensions (mm)	96 x 96 x 55
Panel Cut Out	92 ^(+0.8,-0.0) x 92 ^(+0.8,-0.0) , 43mm Depth (Behind Bezel / Panel)
Terminals / Connectors	Tin Plated Brass Terminals and Screws
Case / Housing Material	DIN Black ABS, Dimension as per DIN 43700
Mounting	Panel Mounting
Mounting Clamps	Sturdy, Moulded Derlin
Dielectric Strength	2.5kV at 50Hz for 1min.
Insulation Resistance	>20MΩ at 500V DC
Installation Category	Cat III (IEC / EN 61010-1)
Pollution	Degree 2 (IEC/EN 61010-1)
Auxiliary Supply	85-265V AC / DC (Standard) 19-90V AC / DC (Optional)

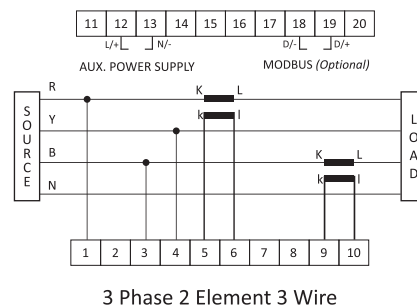
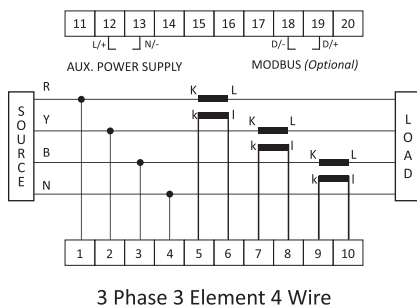
SPECIFICATIONS

Input Current	0.03A to 1.2A (Max.) 0.11A to 6A (Max.)	Any One
Input Voltage	51-300V AC (Max.) PH-N 88-519V AC (Max.) PH-PH 16-138V AC (Max.) PH-N 28-239V AC (Max.) PH-PH	Any One
Frequency	45 - 55 Hz	
Power Factor	0.3 (Lag) - 1 - 0.3 (Lead)	
VA (Burden)		
Auxiliary	< 3 VA	
Voltage Input	< 0.3 VA / Phase	
Current Input	< 0.2 VA / Phase	
Environment		
Calibration	27°C ± 5°C	
Operating	0 to +50°C, RH < 70%	
Storage	-10 to +60°C, RH < 70%	

Parameters Measured	Accuracy ±(% FS)	Phase	System
Voltage		V1N, V2N, V3N, V12, V23, V31	V (System)
Current	± 0.5%	I1, I2, I3	I (Average)
Active Power		W1, W2, W3	W (System)
Reactive Power	± 1.0%	VAR1, VAR2, VAR3	VAR (System)
Apparent Power		VA1, VA2, VA3	VA (System)
Frequency	± 0.2Hz	N.A.	Hz (System)
Power Factor	± 1° Electrical	PF1, PF2, PF3	PF (System)
Active Energy		KWh1, KWh2, KWh3	KWh Total (Import), KWh Total (Export)
Reactive Energy	Class 1	KVARh1, KVARh2, KVARh3	KVARh Total (Ind.), KVARh Total (Cap.)
Apparent Energy		KVAh1, KVAh2, KVAh3	KVAh Total

Ordering Information : Model, Input Voltage, Input Current, Auxiliary Supply & RS485 MODBUS Communication Port (Optional), RS485-RS232 Converter (Optional)

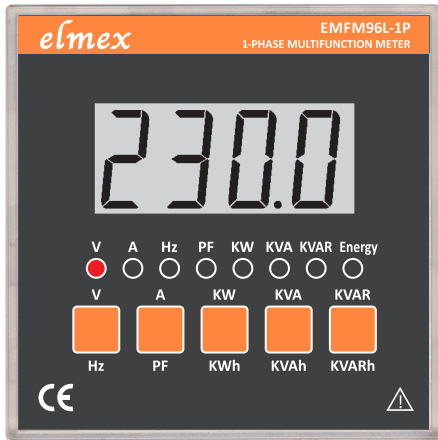
TERMINAL CONNECTION





EMFM96L-1P

1-Phase Multifunction Meter



FEATURES

- TRMS Measurement
- 10 Parameter on 10 Display Pages
- POWER MASTER Software (Optional)
- RS485 Port, 5KV Isolated with MODBUS RTU Protocol (Optional)
- User Programmable CTR (1.00 - 99.99) for (1A / 5A)
- Auto Scroll / Manual Scroll Display (User Selectable)
- Ideal for Testing of Electrical Appliances

Micro
Controller
Based



SPECIFICATIONS

Display	4 Digit LCD Display with Backlight and LED Indicator for Parameter Indication
Digit Height	0.78" / 20mm
Connection	1 Ph 2W
Dimensions (mm)	96 x 96 x 55
Panel Cut Out	92 ^(+0.8,-0.0) x 92 ^(+0.8,-0.0) , 43mm Depth (Behind Bezel / Panel)
Terminals / Connectors	Tin Plated Brass Terminals and Screws
Case / Housing Material	DIN Black ABS, Dimension as per DIN 43700
Mounting	Panel Mounting
Mounting Clamps	Sturdy, Moulded Derlin
Dielectric Strength	2.5kV at 50Hz for 1min.
Insulation Resistance	>20MΩ at 500V DC
Installation Category	Cat III (IEC/EN 61010-1)
Pollution	Degree 2 (IEC/EN 61010-1)
Auxiliary Supply	SMPS 85-265V AC / DC

SPECIFICATIONS

RMS Current	0.025A to 1.2A (Max.) 0.125A to 6A (Max.)	Any One
RMS Voltage	50 - 300 Vrms	
Frequency	45 - 55Hz	
Power Factor	0.3 (Lag) - 1 - 0.3 (Lead)	
Active Power	0.030 - 1.800 KW (5 A) 0.006 - 0.360 KW (1 A)	
Reactive Power	0.030 - 1.800 KVAR (5 A) 0.006 - 0.360 KVAR (1 A)	
Apparent Power	0.030 - 1.800 KVA (5 A) 0.006 - 0.360 KVA (1 A)	

Parameters Measured

Accuracy

RMS Voltage	± (0.5% FS + 1 digit)
RMS Current	± (0.5% FS + 1 digit)
Active Power	±(0.5% FS + 1 digit) [Cos φ = 0.3 to 1.000]
Reactive Power	±(1% FS + 1 digit) [Sin φ = 0.3 to 1.000]
Apparent Power	±(0.5% FS + 1 digit)

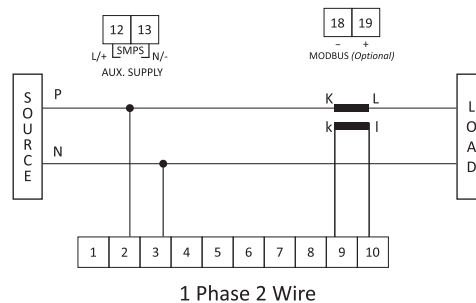
Parameters Measured

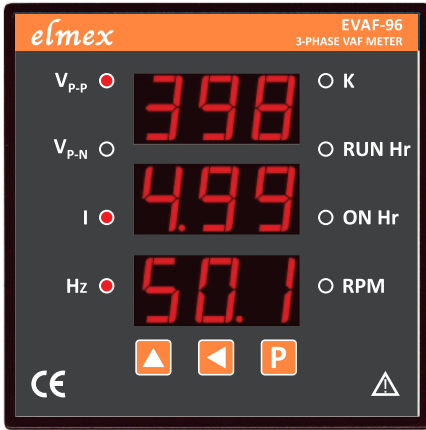
Accuracy

Power Factor	± (0.01 PF + 1 digit)
Frequency	± 0.1 Hz
Active Energy (KWh)	Class 1
Apparent Energy (KVAh)	Class 1
Reactive Energy (KVARh)	Class 1

Ordering Information : Model, Input Current (1A or 5A any one only) & RS485 Port (Optional), RS485-RS232 Converter (Optional)

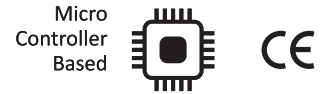
TERMINAL CONNECTION





FEATURES

TRMS Measurement	Auto Scroll / Manual Scroll Display
Measures V, A, Hz, Run Hour, ON Hour & RPM	Programmable CTR, PTR, Number of Pole setting
RUN Hour/ ON Hour (Max.9999 Hours, 59 Minutes, 59 Seconds)	Auto Indication for 'KV' & 'KA'
RUN Hour/ ON Hour Reset Facility	Auto Selection of Decimal Point



SPECIFICATIONS

Display	3 Rows of 3 Digits Red Seven Segment Display
Digit Height	0.56"/14.2 mm
Connection	3 Ph 3E 4W
Dimensions (mm)	96 x 96 x 55
Panel Cut Out	92 ^(+0.8,-0.0) x 92 ^(+0.8,-0.0) , 43mm Depth (Behind Bezel / Panel)
Terminals / Connectors	Tin Plated Brass Terminals and Screws
Case / Housing Material	DIN Black ABS, Dimension as per DIN 43700
Mounting	Panel Mounting
Mounting Clamps	Sturdy, Moulded Derlin
Dielectric Strength	2.5kV at 50Hz for 1min.
Insulation Resistance	>20MΩ at 500V DC
Installation Category	Cat III (IEC/EN 61010-1)
Pollution	Degree 2 (IEC/EN 61010-1)
Auxiliary Supply	85-265V AC / DC (SMPS) (Standard) 19-90V AC / DC (SMPS) (Optional)

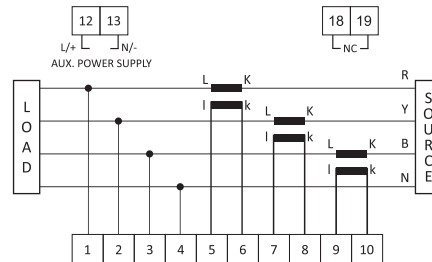
SPECIFICATIONS

Input Current	0.1A to 1.2A (Max.) for 1A meter 0.5A to 6A (Max.) for 5A meter	Any One
Input Voltage	51-300V AC (Max.) PH-N 88-519V AC (Max.) PH-PH 21-150V AC (Max.) PH-N 36-258V AC (Max.) PH-PH	Any One
Frequency	45 - 55Hz	
RPM	As per Number of Pole Setting Fully Programmable (1-255)	
VA (Burden)		
Auxiliary	< 2.5 VA	
Voltage Input	< 0.2 VA / Phase	
Current Input	< 0.2 VA / Phase	
Environment		
Calibration	27°C ± 5°C	
Operating	0 to +50°C, RH < 70%	
Storage	-10 to +60°C, RH < 70%	

Parameters Measured	Accuracy ±(% FS)	Phase	System
Voltage	± 0.5%	VRN, VYN, VBN, VRY, VYB, VBR	V (System)
Current	± 0.5%	IR, IY, IB	I (Average)
Frequency	± 0.2Hz	N.A.	Hz (System)
RPM	± 0.5%	N.A.	RPM (System)
RUN Hour	N.A.	N.A.	RUN Hour (System)
ON Hour	N.A.	N.A.	ON Hour (System)

Ordering Information : Model, Input Voltage, Input Current and Auxiliary Supply

TERMINAL CONNECTION



3 Phase 3 Element 4 Wire



EDVM-96



EDVM-72



EDVM-48

FEATURES

- TRMS Measurement Using Micro controller
- High Accuracy Across the Entire Range
- User Programmable Display (PTR)
- 9999 Count (Max.) High Resolution Display
- Auto Selection of Decimal Point

Micro
Controller
Based



SPECIFICATIONS

Display	4 Digit Red LED Super Bright Display
Digit Height	0.56"/14.2 mm
Maximum Display	9999 (Max.) Counts
Resolution	0.001 to 1 Count Depending on Range / Scale Display
Display Stability	Within ± 1 Digit
Faceplate / Lens	Polycarbonate Transparent Red
Case / Housing Material	Polycarbonate, Black
Connectors / Terminal	Nylon 66, 33% GF, Black / Brass
Mounting Clamps	Sturdy, Moulded Delrin
Decimal Point	Auto Selection
Over Range Indication	"Or"
Under Range Indication	NA
Dielectric Strength	2.5 KV @ 50Hz for 1 minute between Input - Auxiliary & Case - Terminals
Impulse Withstand	3.5 KV, 1.2 / 50 micro Second

SPECIFICATIONS

Sampling Rate	3 Samples / Second
Maximum Overload	Voltage: 1.2 Times Continuous
Frequency Response	40 - 400 Hz
Auxiliary Supply	85 - 265V AC / DC
Input Voltage	0 - 750V AC (Direct) Any One 0 - 110V AC (PT Operated)
Accuracy	$\pm 0.5\%$ of FSD
VA (Burden)	
Auxiliary	≤ 1.5 VA
Voltage Input	≤ 1.0 VA
Environment	
Calibration	$27^{\circ}\text{C} \pm 5^{\circ}\text{C}$
Operating	0 to $+55^{\circ}\text{C}$, RH < 70%
Storage	-10 to $+70^{\circ}\text{C}$, RH < 70%

► User Programmable PTR Display Value (Using Key) for PT Operated Meter

Sr. No.	Ratio	PTR (KV AC)
1	1	0.110
2	3.77	0.415
3	4	0.440
4	20	2.200

Sr. No.	Ratio	PTR (KV AC)
5	30	3.300
6	60	6.600
7	100	11.00
8	200	22.00

Sr. No.	Ratio	PTR (KV AC)
9	300	33.00
10	600	66.00
11	1000	110.0
12	1200	132.0

Sr. No.	Ratio	PTR (KV AC)
13	2000	220.0
14	4000	440.0
-	-	-
-	-	-

Dimensions (mm)

Model	EDVM-72	EDVM-48	EDVM-96
Front	72 x 72	48 x 96	96 x 96
Depth (Behind Bezel)	43	58	39.5
Panel Cut - Out	$68^{(+0.5,-0.0)} \times 68^{(+0.5,-0.0)}$	$44^{(+0.5,-0.0)} \times 92^{(+0.8,-0.0)}$	$92^{(+0.8,-0.0)} \times 92^{(+0.8,-0.0)}$

Ordering Information : Model, Input & Range

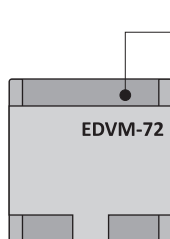
Terminal Connection

AUX 85-265V AC/DC		INPUT	
P	N	LO	HI
1	2	3	4

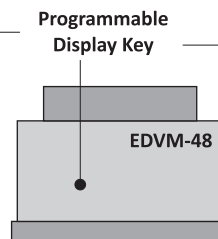
EDVM-72

INPUT		AUX 85-265V AC/DC	
HI	LO	N	P
1	2	3	4

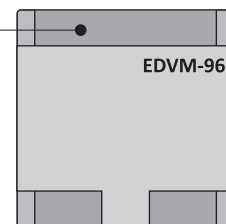
EDVM-48 / EDVM-96



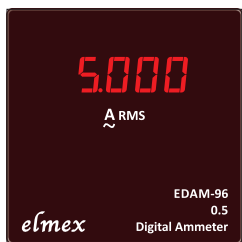
Back Side of Meter



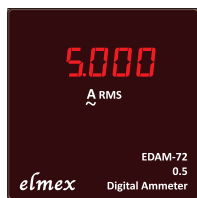
Bottom Side of Meter



Back Side of Meter



EDAM-96



EDAM-72



EDAM-48

FEATURES

- TRMS Measurement Using Micro controller
- High Accuracy Across the Entire Range
- User Programmable Display (CT Primary)
- 9999 Count (Max.) High Resolution Display
- Auto Selection of Decimal Point

Micro
Controller
Based



SPECIFICATIONS

Display	4 Digit Red LED Super Bright Display
Digit Height	0.56"/14.2 mm
Maximum Display	9999 (Max.) Counts
Resolution	0.001 to 1 Count Depending on Range / Scale Display
Display Stability	Within ± 1 Digit
Faceplate / Lens	Polycarbonate Transparent Red
Case / Housing Material	Polycarbonate, Black
Connectors / Terminal	Nylon 66, 33% GF, Black / Brass
Mounting Clamps	Sturdy, Moulded Derlin
Decimal Point	Auto Selection
Over Range Indication	"Or"
Under Range Indication	NA
Dielectric Strength	2.5 KV @ 50Hz for 1 minute between Input - Auxiliary & Case - Terminals
Impulse Withstand	3.5 KV, 1.2 / 50 micro Second

SPECIFICATIONS

Sampling Rate	3 Samples / Second
Maximum Overload	Current: 1.5 Times Continuous
Frequency Response	40 - 400 Hz
Auxiliary Supply	85 - 265V AC / DC
Input Current	0 - 5 A (Direct / CT Operated)
Accuracy	$\pm 0.5\%$ of FSD
VA (Burden)	
Auxiliary	≤ 1.5 VA
Current Input	≤ 1.0 VA
Environment	
Calibration	$27^{\circ}\text{C} \pm 5^{\circ}\text{C}$
Operating	0 to $+55^{\circ}\text{C}$, RH < 70%
Storage	-10 to $+70^{\circ}\text{C}$, RH < 70%

► User Programmable CT Primary

CT Primary

1	25	70	150	350	700	1500	4000	8000
5	30	75	175	400	750	1600	5000	9000
10	40	80	200	450	800	2000	6000	-
15	50	100	250	500	1000	2500	7000	-
20	60	125	300	600	1200	3000	7500	-

Dimensions (mm)

Model	EDAM-72	EDAM-48	EDAM-96
Front	72 x 72	48 x 96	96 x 96
Depth (Behind Bezel)	43	58	39.5
Panel Cut - Out	$68^{(+0.5,-0.0)} \times 68^{(+0.5,-0.0)}$	$44^{(+0.5,-0.0)} \times 92^{(+0.8,-0.0)}$	$92^{(+0.8,-0.0)} \times 92^{(+0.8,-0.0)}$

Ordering Information : Model

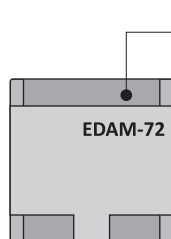
Terminal Connection

AUX 85-265V AC/DC		INPUT	
P	N	LO	HI
1	2	3	4

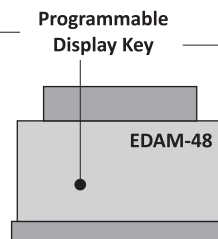
EDAM-72

INPUT		AUX 85-265V AC/DC	
HI	LO	N	P
1	2	3	4

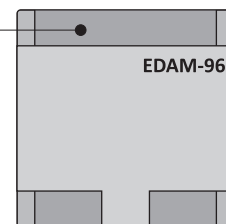
EDAM-48 / EDAM-96



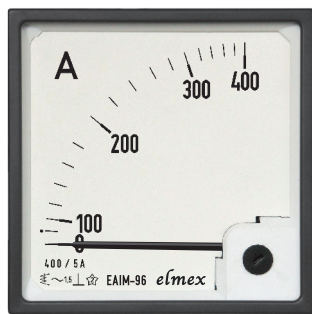
Back Side of Meter



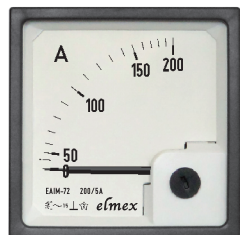
Bottom Side of Meter



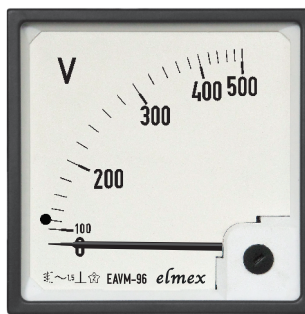
Back Side of Meter



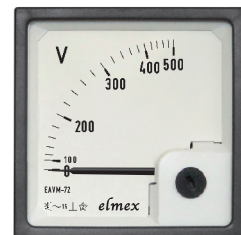
EAIM-96



EAIM-72



EAVM-96



EAVM-72



SPECIFICATIONS

Description	Moving iron meter of 90° deflection with Interchangeable Scale Facility
Movement Type	Moving iron spring - mounted jewel bearing suspension
Construction & Design	According to IS 1248; EN 60051
Scale	According to DIN 43802
Case / Housing Material	ABS, White dimensions as per DIN 43700
Bezel	ABS, Black dimensions as per DIN 43718
Glass Faceplate	Flat Glass
Mounting Fasteners / Clamps	Ergonomic easy mountable clamps and nuts for easy installation on Switchboards, Panels, Mosaics etc.

SPECIFICATIONS

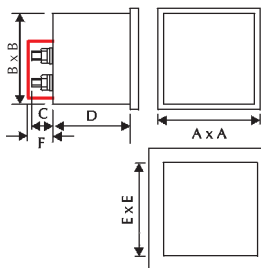
Self Consumption	Ammeters (upto 5A AC) ≤ 0.6VA; Voltmeters (upto 500 VAC) ≤ 5 VA
Accuracy	± 1.5% of FSD as per IS 1248; EN 60051
Operating Voltage	600V RMS Max.
Test Voltage	2.5KV for 1 Minute at 50 Hz
Front Protection	IP52 Protection as per IS2147
Terminal Protection	Back cover for IP20 Terminal Protection as per IS2147 (Optional)
Temperature Conditions:	Operating -10°C to +55°C, RH < 90% Storage -20°C to +70°C, RH < 90% (EN60051)

Ammeter						Voltmeter		
1 x In (A)		2 x In (A)		6 x In (A)		Direct	with PT	
Direct	with CT	Direct	with CT	Direct	with CT		Ratio and Scale	
1A	CTR / 5A	1 / 2A	CTR / 5A	1 / 6A	CTR / 5A	50V	PTR / 63.5V	
5A	CRT / 1A	5 / 10A	CRT / 1A	5 / 30A	CRT / 1A	60V	PTR / 110V	10 KV/-
	10/-		10 / 20/-		10 / 60/-	75V	PTR / 230V	15 KV/-
	15/-		15 / 30/-		15 / 90/-	100V	PTR / 250V	20 KV/-
	20/-		20 / 40/-		20 / 120/-	110V	PTR / 400V	25 KV/-
	25/-		25 / 50/-		25 / 150/-	150V	PTR / 440V	30 KV/-
	30/-		30 / 60/-		30 / 180/-	250V		40 KV/-
	40/-		40 / 80/-		40 / 240/-	300V	1 KV/-	50 KV/-
	50/-		50 / 100/-		50 / 300/-	500V	1.2 KV/-	60 KV/-
	60/-		60 / 120/-		60 / 360/-	600V	1.5 KV/-	75 KV/-
	75/-		75 / 150/-		75 / 450/-	750V	2 KV/-	80 KV/-
	100/-		100 / 200/-		100 / 600/-		2.5 KV/-	100 KV/-
	150/-		150 / 300/-		150 / 900/-		3 KV/-	and higher
	250/-		250 / 500/-		250 / 1500/-		3.5 KV/-	
	400/-		400 / 800/-		400 / 2400/-		4 KV/-	
	500/-		500 / 1000/-		500 / 3000/-		5 KV/-	
	600/-		600 / 1200/-		600 / 3600/-		6 KV/-	
	1000/-		1000 / 2000/-		1000 / 6000/-		7.5 KV/-	
	1500/-		1500 / 3000/-		1500 / 9000/-		8 KV/-	
	and higher		and higher		and higher			

Ordering Information: Model, Input Range, CTR / PTR, Scale

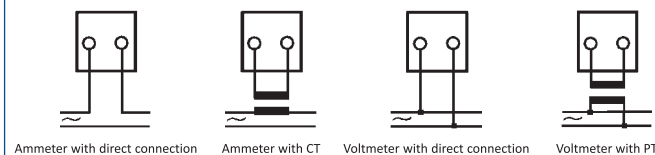
Dimension and Panel Cutout

Model	Dimensions (mm)					
	A	B	C (Max)	D	E ^{+0.8} _{-0.0}	F
EAVM-72 / EAIM-72	72	67	17	51.5	68	21
EAVM-96 / EAIM-96	96	90	17	51.5	92	21



- Optional Terminal Protection Cover

Wire Diagram



Notes: (A) Double stamping / non standard marking available. | (B) Gaskets (Optional) for vibration proof available.
(C) AC instruments calibrated @ 50 Hz. (400 Hz on request.) | (D) Other ranges subject to technical feasibility.



Elmex Controls Pvt. Ltd. | Elmex Electric Pvt. Ltd.

12, GIDC Estate, Makarpura, Vadodara -390010, Gujarat, India

☎ 0265-2642021 / 23

✉ marketing@elmex.net

🌐 www.elmex.net