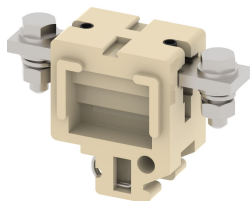


## CBT110

Terminal Type - CBT110, High Current connectors, nominal voltage: 1000 V, nominal current: 150 A, Rated cross-section - 50 mm<sup>2</sup>, connection method: Bolt connection, number of connections: 2, cross-section: 35 mm<sup>2</sup> - 50 mm<sup>2</sup>, mounting type: TS32



### Approvals

CE

### General Information

Product Name	CBT110
Connection Method	Bolt Connection
Rating	1000 V/150 A/50 mm <sup>2</sup> /3 Nm
HSN Number	85389000
Standard Packing Qty(in No)	10
Country Of Origin	India
Screw thread	M6

### Dimensions & Weight

Width	28 mm	1.1 inch
Length	75 mm	2.95 inch
Height	49 mm	1.93 inch
Weight of std. Packing Unit	1.1 Kg	

### Material Data

Insulating Material	Melamine
Standard Colour	Khakhi
Colour Variants	Red , Yellow , Blue , Black ,

### Rated Conductor Size


Conductor cross section flexible min	35 mm <sup>2</sup>
Conductor cross section flexible max	50 mm <sup>2</sup>
Conductor cross section solid min	35 mm <sup>2</sup>
Conductor cross section solid max	50 mm <sup>2</sup>

## Ratings - IEC

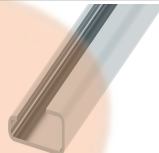
Connection in acc. with standard	IEC 60947-7-1
Nominal Voltage $U_n$	1000 V
Nominal Current $I_n$	150 A
Nominal cross section	50 mm <sup>2</sup>
Short-time current	6 kA
Rated surge voltage	8 kV
Degree of pollution	3

## Product Accessories

### Cover Profile

PCP110	Width : 32.00 mm Thickness : 1.50 mm Length : 129.50 mm	
--------	---	---

### DIN Rail Perforated



CHS	Height : 15.00 mm Width : 32.00 mm Thickness : 1.50 mm	
-----	--	--

### End Clamp

SCS	Height : 26.90 mm Length : 21.00 mm	
SCSN	Height : 31.00 mm Width : 8.40 mm Length : 27.00 mm	
SCUP	Height : 34.00 mm Length : 44.75 mm	
SCUSL	Height : 41.10 mm Width : 8.00 mm Length : 47.50 mm	
SCUDD	Height : 50.00 mm Width : 10.00 mm Length : 55.60 mm	
SCUN	Height : 35.50 mm Width : 9.50 mm Length : 50.60 mm	

Marker For Terminal Blocks		
LABEL KN10	Width : 10.00 mm	

Partition Plate		
BPA110	Height : 66.00 mm Width : 3.00 mm Length : 125.00 mm	

Marker carriers		
GMC	Height : 48.00 mm Width : 39.00 mm Thickness : 1.00 mm Length : 38.00 mm	
SCUDDMLH	Height : 71.50 mm Width : 10.00 mm Length : 55.60 mm	
SCUNMLH	Height : 53.50 mm Width : 9.50 mm Length : 50.60 mm	