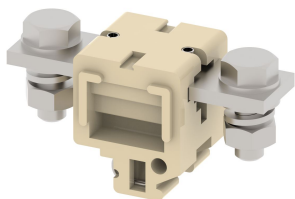


CBT250T

Terminal Type - CBT250T, High Current connectors, nominal voltage: 1000 V, nominal current: 250 A, Rated cross-section - 95 mm², connection method: Bolt connection - Nuts are slotted for screwdriver operation , number of connections: 2, cross-section: 70 mm² - 95 mm², mounting type: TS32



Approvals

CE

General Information

Product Name	CBT250T
Connection Method	Bolt Connection
Rating	1000 V/250 A/95 mm ² /10 Nm
HSN Number	85389000
Standard Packing Qty(in No)	10
Country Of Origin	India
Screw thread	M10

Dimensions & Weight

Width	40 mm	1.57 inch
Length	96 mm	3.78 inch
Height	49.7 mm	1.96 inch
Weight of std. Packing Unit	2.73 Kg	

Material Data

Insulating Material	Melamine
Standard Colour	Khakhi
Colour Variants	Red , Yellow , Blue , Black ,

Rated Conductor Size


Conductor cross section flexible min	70 mm ²
Conductor cross section flexible max	95 mm ²
Conductor cross section solid min	70 mm ²
Conductor cross section solid max	95 mm ²

Ratings - IEC

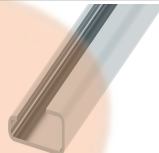
Connection in acc. with standard	IEC 60947-7-1
Nominal Voltage U_n	1000 V
Nominal Current I_n	250 A
Nominal cross section	95 mm ²
Short-time current	11.40 kA
Rated surge voltage	8 kV
Degree of pollution	3

Product Accessories

Cover Profile

PCP250	Width : 49.00 mm Thickness : 1.50 mm Length : 166.00 mm	
--------	---	---

DIN Rail Perforated



CHS	Height : 15.00 mm Width : 32.00 mm Thickness : 1.50 mm	
-----	--	--

End Clamp

SCS	Height : 26.90 mm Length : 21.00 mm	
SCSN	Height : 31.00 mm Width : 8.40 mm Length : 27.00 mm	
SCUP	Height : 34.00 mm Length : 44.75 mm	
SCUSL	Height : 41.10 mm Width : 8.00 mm Length : 47.50 mm	
SCUDD	Height : 50.00 mm Width : 10.00 mm Length : 55.60 mm	
SCUN	Height : 35.50 mm Width : 9.50 mm Length : 50.60 mm	

Marker For Terminal Blocks		
LABEL KN10	Width : 10.00 mm	

Partition Plate		
BPA17/25	Height : 81.20 mm Thickness : 3.00 mm Length : 160.00 mm	

Marker carriers		
GMC	Height : 48.00 mm Width : 39.00 mm Thickness : 1.00 mm Length : 38.00 mm	
SCUDDMLH	Height : 71.50 mm Width : 10.00 mm Length : 55.60 mm	
SCUNMLH	Height : 53.50 mm Width : 9.50 mm Length : 50.60 mm	