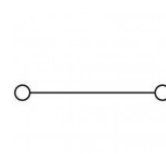
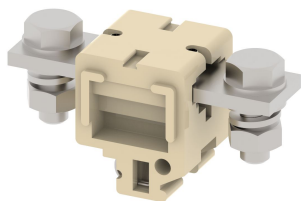


CBT300

Terminal Type - CBT300, High Current connectors, nominal voltage: 1000 V, nominal current: 300 A, Rated cross-section - 120 mm², connection method: Bolt connection, number of connections: 2, cross-section: 70 mm² - 120 mm², mounting type: TS32



Approvals

CE

General Information

Product Name	CBT300
Connection Method	Bolt Connection
Rating	1000 V/300 A/120 mm ² /10 Nm
HSN Number	85389000
Standard Packing Qty(in No)	10
Country Of Origin	India
Screw thread	M10

Dimensions & Weight

Width	40 mm	1.57 inch
Length	96 mm	3.78 inch
Height	52 mm	2.05 inch
Weight of std. Packing Unit	2.77 Kg	

Material Data

Insulating Material	Melamine
Standard Colour	Khakhi
Colour Variants	Red , Yellow , Blue , Black ,

Rated Conductor Size


Conductor cross section flexible min	70 mm ²
Conductor cross section flexible max	120 mm ²
Conductor cross section solid min	70 mm ²
Conductor cross section solid max	120 mm ²

Ratings - IEC

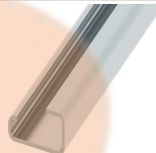
Connection in acc. with standard	IEC 60947-7-1
Nominal Voltage U_n	1000 V
Nominal Current I_n	300 A
Nominal cross section	120 mm ²
Short-time current	14.40 kA
Rated surge voltage	8 kV
Degree of pollution	3

Product Accessories

Cover Profile

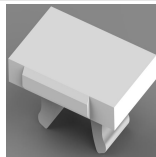
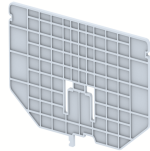


PCP250	Width : 49.00 mm Thickness : 1.50 mm Length : 166.00 mm	
--------	---	---

DIN Rail Perforated

CHS	Height : 15.00 mm Width : 32.00 mm Thickness : 1.50 mm	
-----	--	--

End Clamp

SCS	Height : 26.90 mm Length : 21.00 mm	
SCSN	Height : 31.00 mm Width : 8.40 mm Length : 27.00 mm	
SCUP	Height : 34.00 mm Length : 44.75 mm	
SCUSL	Height : 41.10 mm Width : 8.00 mm Length : 47.50 mm	
SCUDD	Height : 50.00 mm Width : 10.00 mm Length : 55.60 mm	
SCUN	Height : 35.50 mm Width : 9.50 mm Length : 50.60 mm	

Marker For Terminal Blocks		
LABEL KN10	Width : 10.00 mm	
Partition Plate		
BPA17/25	Height : 81.20 mm Thickness : 3.00 mm Length : 160.00 mm	
Marker carriers		
GMC	Height : 48.00 mm Width : 39.00 mm Thickness : 1.00 mm Length : 38.00 mm	
SCUDDMLH	Height : 71.50 mm Width : 10.00 mm Length : 55.60 mm	
SCUNMLH	Height : 53.50 mm Width : 9.50 mm Length : 50.60 mm	