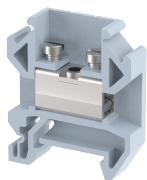


## CET4

Terminal Type - CET 4 , Mini and Micro Feed-through terminal block, nominal voltage: 500 V, nominal current: 32 A, Rated cross-section - 4 mm<sup>2</sup>, connection method: Screw clamp connection, number of connections: 2, cross-section: 0.5 mm<sup>2</sup> - 6 mm<sup>2</sup>, mounting type: TS15



### Approvals



### General Information

Product Name	CET4
Connection Method	Screw Connection
Rating	500 V/32 A/4 mm <sup>2</sup> /0.5 Nm
HSN Number	85389000
Standard Packing Qty(in No)	100
Country Of Origin	India
Screw thread	M3

### Dimensions & Weight

Width	6.5 mm	0.26 inch
Length	26 mm	1.02 inch
Height	30 mm	1.18 inch
Weight of std. Packing Unit	0.56 Kg	

### Material Data

Insulating Material	Polyamide 6,6
Standard Colour	Gray
Colour Variants	Red , Yellow , Blue , Black , Green , Khakhi ,

### Rated Conductor Size

Conductor cross section flexible min	0.5 mm <sup>2</sup>
Conductor cross section flexible max	4 mm <sup>2</sup>
Conductor cross section solid min	0.5 mm <sup>2</sup>
Conductor cross section solid max	6 mm <sup>2</sup>

## Ratings - IEC

Connection in acc. with standard	IEC 60947-7-1
Nominal Voltage $U_n$	500 V
Nominal Current $I_n$	32 A
Nominal cross section	4 mm <sup>2</sup>
Short-time current	0.48 kA
Rated surge voltage	4 kV
Degree of pollution	3

## Product Accessories

### DIN Rail Perforated

CHM	Height : 5.00 mm Width : 15.00 mm Thickness : 1.00 mm	
-----	---	---




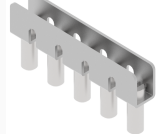
### End Clamp

SCMN	Height : 18.00 mm Width : 6.10 mm Length : 23.50 mm	
------	---	--

### End Cover

EPMN	Height : 25.00 mm Width : 1.50 mm Length : 26.00 mm	
------	---	---

### Fixed Bridge

SLE-2W	Pitch : 6.50 mm	
SLE-3W	Height : 13.20 mm Pitch : 6.50 mm Length : 17.60 mm	
SLE-4W	Height : 13.20 mm Pitch : 6.50 mm Length : 24.10 mm	
SLE-5W	Height : 13.20 mm Pitch : 6.50 mm Length : 30.60 mm	

<b>Marker For Terminal Blocks</b>		
LABEL KN6.5	Width : 6.70 mm	
<b>Partition Plate</b>		
MBX	Height : 36.70 mm Width : 1.50 mm Length : 42.70 mm	

