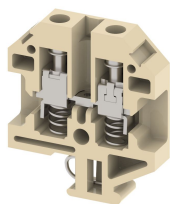


## CSLT1

Terminal Type - CSLT1, Feed Through Terminal block, nominal voltage: 800 V, nominal current: 57 A, Rated cross-section - 10 mm<sup>2</sup>, connection method: Screw connection with spring support, number of connections: 2, cross-section: 1.5 mm<sup>2</sup> - 10 mm<sup>2</sup>, mounting type:TS32, colour : KHAKHI



### Approvals

CE

### General Information

Product Name	CSLT1
Connection Method	Screw Connection with spring support
Rating	800 V/57 A/10 mm <sup>2</sup> /1.2 Nm
HSN Number	85389000
Standard Packing Qty(in No)	50
Country Of Origin	India
Screw thread	M4

### Dimensions & Weight

Width	11 mm	0.43 inch
Length	50 mm	1.97 inch
Height	57 mm	2.24 inch
Weight of std. Packing Unit	1.79 Kg	

### Material Data

Insulating Material	Melamine
Standard Colour	Khakhi
Colour Variants	Red , Yellow , Blue , Black ,

### Rated Conductor Size

Conductor cross section flexible min	1.5 mm <sup>2</sup>
Conductor cross section flexible max	10 mm <sup>2</sup>
Conductor cross section solid min	1.5 mm <sup>2</sup>
Conductor cross section solid max	16 mm <sup>2</sup>

## Ratings - IEC

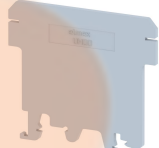
Connection in acc. with standard	IEC 60947-7-1
Nominal Voltage $U_n$	800 V
Nominal Current $I_n$	57 A
Nominal cross section	10 mm <sup>2</sup>
Short-time current	1.2 kA
Rated surge voltage	8 kV
Degree of pollution	3

## Product Accessories

### Cover Profile

PCK3	Height : 28.00 mm Width : 58.35 mm Thickness : 1.00 mm	
------	--	---


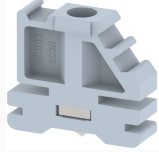
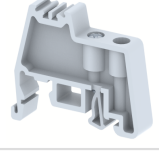
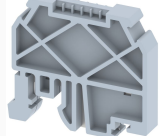
### Cover Profile Carrier

UHDD	Height : 74.50 mm Thickness : 2.00 mm Length : 55.82 mm	
------	---	--


### DIN Rail Perforated



CHS	Height : 15.00 mm Width : 32.00 mm Thickness : 1.50 mm	
-----	--	---

### End Clamp

SCS	Height : 26.90 mm Length : 21.00 mm	
SCSN	Height : 31.00 mm Width : 8.40 mm Length : 27.00 mm	
SCUP	Height : 34.00 mm Length : 44.75 mm	
SCUSL	Height : 41.10 mm Width : 8.00 mm Length : 47.50 mm	

<b>End Clamp</b>		
SCUDD	Height : 50.00 mm Width : 10.00 mm Length : 55.60 mm	
SCUN	Height : 35.50 mm Width : 9.50 mm Length : 50.60 mm	
<b>End Cover</b>		
EPSL	Height : 44.00 mm Width : 2.50 mm Length : 50.00 mm	
<b>Fixed Bridge</b>		
CCLA1L-10W	Height : 28.00 mm Pitch : 11.00 mm Length : 106.60 mm	
CCLA1L-2W	Height : 28.00 mm Pitch : 11.00 mm Length : 20.20 mm	
CCLA1L-3W	Height : 28.00 mm Pitch : 11.00 mm Length : 30.20 mm	
CCLA1L-4W	Height : 28.00 mm Pitch : 11.00 mm Length : 40.20 mm	
CCLA1L-5W	Height : 28.00 mm Pitch : 11.00 mm Length : 51.20 mm	
<b>Marker For Terminal Blocks</b>		
LABEL KN10	Width : 10.00 mm	
<b>Partition Plate</b>		
KBZF	Height : 65.00 mm Width : 1.50 mm Length : 65.00 mm	

<b>Switching Jumper</b>		
RSL1L	Width : 7.00 mm Thickness : 1.60 mm Length : 18.00 mm	
LSR1L	Height : 30.00 mm Width : 6.00 mm	

<b>Marker carriers</b>		
GMC	Height : 48.00 mm Width : 39.00 mm Thickness : 1.00 mm Length : 38.00 mm	
SCUDDMLH	Height : 71.50 mm Width : 10.00 mm Length : 55.60 mm	
SCUNMLH	Height : 53.50 mm Width : 9.50 mm Length : 50.60 mm	