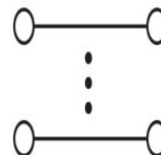
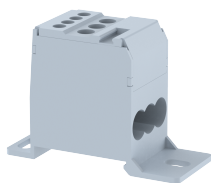


DBD16

Terminal Type - DBD16, Panel Mounted distribution, nominal voltage: 630 V, nominal current: 76 A , Rated cross-section - IC-16 mm²,OG-2X16 mm², 4X6 mm², connection method: Screw connection, number of connections: 7 , cross-section: IC- 6 - 16 mm²,OG- 2.5-16 mm², mounting type: TS35/15, TS35/7.5



Approvals

CE

General Information

Product Name	DBD16
Connection Method	Screw Connection
Rating	630 V/76 A/IC-16 mm ² ,OG-2X16 mm ² , 4X6 mm ² /IC-1.2 Nm , OG-0.8 Nm
HSN Number	85389000
Standard Packing Qty(in No)	10
Country Of Origin	India
Screw thread	IC-M5 , OG-M4

Dimensions & Weight

Width	27.5 mm	1.08 inch
Length	66 mm	2.6 inch
Height	46.5 mm	1.83 inch
Weight of std. Packing Unit	0.69 Kg	

Material Data

Insulating Material	Polyamide 6,6
Standard Colour	Gray
Colour Variants	Red , Yellow , Blue , Black , Green , Khakhi , Gray ,

Rated Conductor Size



Conductor cross section flexible min	IC-6 mm ² , OG-2.5 to 6 mm ²
Conductor cross section flexible max	IC-16 mm ² , OG-6 to 16 mm ²
Conductor cross section solid min	IC-6 mm ² , OG-2.5 to 6 mm ²
Conductor cross section solid max	IC-16 mm ² , OG-6 to 16 mm ²

Ratings - IEC

Connection in acc. with standard	IEC 60947-7-1
Nominal Voltage U_n	630 V
Nominal Current I_n	76 A
Nominal cross section	IC-16 mm ² , OG-2X16 mm ² , 4X6 mm ²
Short-time current	1.92 kA
Rated surge voltage	8 kV
Degree of pollution	3

Product Accessories

DIN Rail Perforated

CHKDS	Height : 15.00 mm Width : 35.00 mm Thickness : 1.50 mm	
CHKS	Height : 7.50 mm Width : 35.00 mm Thickness : 1.00 mm	

DIN Rail, Unperforated

CHKD	Height : 15.00 mm Width : 35.00 mm Thickness : 1.50 mm	
CHK	Height : 7.50 mm Width : 35.00 mm Thickness : 1.00 mm	

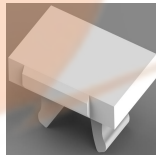
End Cap


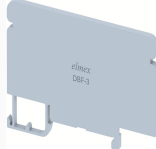
CHKENDCAP	Height : 14.00 mm Width : 9.00 mm Length : 41.50 mm	
-----------	-----------------------------------------------------------	---------------------------------------------------------------------------------------

End Clamp

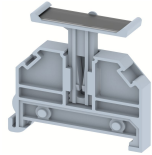
SCUP	Height : 34.00 mm Length : 44.75 mm	
SCUSL	Height : 41.10 mm Width : 8.00 mm Length : 47.50 mm	

End Clamp		
SCUDD	Height : 50.00 mm Width : 10.00 mm Length : 55.60 mm	
DCKN	Height : 33.00 mm Width : 6.00 mm Length : 43.50 mm	
DCKN10	Height : 35.00 mm Width : 10.00 mm Length : 43.50 mm	
SCKN	Height : 34.50 mm Width : 8.00 mm Length : 44.90 mm	
SCUN	Height : 35.50 mm Width : 9.50 mm Length : 50.60 mm	

Marker For Terminal Blocks		
LABEL KN12	Width : 12.00 mm	

Partition Plate		
KBXF	Height : 53.40 mm Thickness : 1.50 mm Length : 54.00 mm	
DBF-3	Height : 38.40 mm Width : 3.00 mm Length : 78.00 mm	

Marker carriers		
SCUDDMLH	Height : 71.50 mm Width : 10.00 mm Length : 55.60 mm	
SCUNMLH	Height : 53.50 mm Width : 9.50 mm Length : 50.60 mm	

Marker carriers		
DCKNMLH	Height : 45.50 mm Width : 6.00 mm Length : 43.50 mm	
SCKNMLH	Height : 45.50 mm Width : 8.00 mm Length : 44.90 mm	