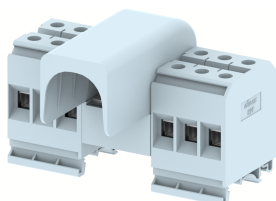


## **DBK150/25-1X6**

Terminal Type - DBK150/25-1X6 , Distribution Block, nominal voltage: 800 V, nominal current:IC-309 A , OG-101 A , Rated cross-section- IC-150 mm<sup>2</sup>, OG-25 mm<sup>2</sup>, connection method: 1 Nut connection for IC & Screw connection for OG, number of connections: 13 , cross-section: IC- 50 - 150 mm<sup>2</sup>, OG -6-25 mm<sup>2</sup>, mounting type: TS 35/7.5, TS 35/15 , TS 32



### Approvals

CE

### General Information

Product Name	DBK150/25-1X6
Connection Method	1 nut connection for IC & Screw clamp connection for OG
Rating	800 V/IC-309 A, OG-101 A/IC-150 mm <sup>2</sup> , OG-25 mm <sup>2</sup> /IC-14 Nm , OG-2.3 Nm
HSN Number	85389000
Standard Packing Qty(in No)	6
Country Of Origin	India
Screw thread	IC-M12 , OG-M5

### Dimensions & Weight

Width	110 mm	4.33 inch
Length	83.3 mm	3.28 inch
Height	69.5 mm	2.74 inch
Weight of std. Packing Unit	2.65 Kg	

### Material Data

Insulating Material	Polyamide 6,6
Standard Colour	Gray
Colour Variants	Red , Yellow , Blue , Black , Green , Khakhi ,

### Rated Conductor Size

Conductor cross section flexible min	IC-50 mm <sup>2</sup> , OG-6 mm <sup>2</sup>
Conductor cross section flexible max	IC-150 mm <sup>2</sup> , OG-25 mm <sup>2</sup>
Conductor cross section solid min	IC-50 mm <sup>2</sup> , OG-6 mm <sup>2</sup>
Conductor cross section solid max	IC-150 mm <sup>2</sup> , OG-25 mm <sup>2</sup>

## Ratings - IEC

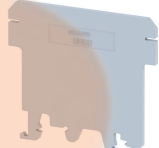
Connection in acc. with standard	IEC 60947-7-1
Nominal Voltage $U_n$	800 V
Nominal Current $I_n$	IC-309 A, OG-101 A
Nominal cross section	IC-150 mm <sup>2</sup> , OG-25 mm <sup>2</sup>
Short-time current	18 kA
Rated surge voltage	8 kV
Degree of pollution	3

## Product Accessories

### Cover Profile

PCK3	Height : 28.00 mm Width : 58.35 mm Thickness : 1.00 mm	
------	--	---

### Cover Profile Carrier

UHDD	Height : 74.50 mm Thickness : 2.00 mm Length : 55.82 mm	
------	---	--


### DIN Rail Perforated


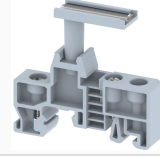
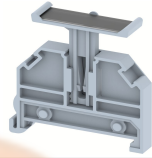
CHKDS	Height : 15.00 mm Width : 35.00 mm Thickness : 1.50 mm	
CHKS	Height : 7.50 mm Width : 35.00 mm Thickness : 1.00 mm	
CHS	Height : 15.00 mm Width : 32.00 mm Thickness : 1.50 mm	

### DIN Rail, Unperforated

CHKD	Height : 15.00 mm Width : 35.00 mm Thickness : 1.50 mm	
CHK	Height : 7.50 mm Width : 35.00 mm Thickness : 1.00 mm	

<b>End Cap</b>		
CHKENDCAP	Height : 14.00 mm Width : 9.00 mm Length : 41.50 mm	
<b>End Clamp</b>		
SCUP	Height : 34.00 mm Length : 44.75 mm	
SCUSL	Height : 41.10 mm Width : 8.00 mm Length : 47.50 mm	
SCUDD	Height : 50.00 mm Width : 10.00 mm Length : 55.60 mm	
DCKN	Height : 33.00 mm Width : 6.00 mm Length : 43.50 mm	
DCKN10	Height : 35.00 mm Width : 10.00 mm Length : 43.50 mm	
SCKN	Height : 34.50 mm Width : 8.00 mm Length : 44.90 mm	
SCUN	Height : 35.50 mm Width : 9.50 mm Length : 50.60 mm	
<b>Marker For Terminal Blocks</b>		
LABEL KN12	Width : 12.00 mm	
<b>Partition Plate</b>		
KBT	Height : 53.00 mm Width : 1.50 mm Length : 59.00 mm	

Partition Plate		
KBZF	Height : 65.00 mm Width : 1.50 mm Length : 65.00 mm	

Marker carriers		
SCUDDMLH	Height : 71.50 mm Width : 10.00 mm Length : 55.60 mm	
SCUNMLH	Height : 53.50 mm Width : 9.50 mm Length : 50.60 mm	
DCKNMLH	Height : 45.50 mm Width : 6.00 mm Length : 43.50 mm	
SCKNMLH	Height : 45.50 mm Width : 8.00 mm Length : 44.90 mm	