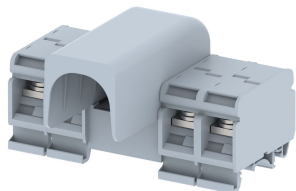


DBK150/M6C-1X4

Terminal Type - DBK150/M6C-1X4 , Distribution Block, nominal voltage: 800 V, nominal current: IC-309 A , OG-101 A ,Rated cross-section- IC-150 mm², OG-25 mm², connection method: Bolt connection, number of connections: 9 , cross-section: IC- 70 - 150 mm² , OG -6-25 mm², mounting type: TS 35/7.5, TS 35/15, TS 32



Approvals

CE

General Information

Product Name	DBK150/M6C-1X4
Connection Method	Bolt Connection
Rating	800 V/IC-309 A, OG-101 A/IC-150 mm ² , OG-25 mm ² /IC-14 Nm , OG-2.5 Nm
HSN Number	85389000
Standard Packing Qty(in No)	5
Country Of Origin	India
Screw thread	IC-M12 , OG-M6

Dimensions & Weight

Width	109 mm	4.29 inch
Length	84.3 mm	3.32 inch
Height	58.2 mm	2.29 inch
Weight of std. Packing Unit	1.6 Kg	

Material Data

Insulating Material	Polyamide 6,6
Standard Colour	Gray
Colour Variants	Red , Yellow , Blue , Black , Green , Khakhi ,

Rated Conductor Size

Conductor cross section flexible min	IC-50 mm ² , OG-6 mm ²
Conductor cross section flexible max	IC-150 mm ² , OG-25 mm ²
Conductor cross section solid min	IC-50 mm ² , OG-6 mm ²
Conductor cross section solid max	IC-150 mm ² , OG-25 mm ²

Ratings - IEC

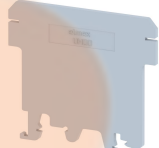
Connection in acc. with standard	IEC 60947-7-1
Nominal Voltage U_n	800 V
Nominal Current I_n	IC-309 A, OG-101 A
Nominal cross section	IC-150 mm ² , OG-25 mm ²
Short-time current	18 kA
Rated surge voltage	8 kV
Degree of pollution	3

Product Accessories

Cover Profile

PCK3	Height : 28.00 mm Width : 58.35 mm Thickness : 1.00 mm	
------	--	---

Cover Profile Carrier

UHDD	Height : 74.50 mm Thickness : 2.00 mm Length : 55.82 mm	
------	---	--

DIN Rail Perforated

CHKDS	Height : 15.00 mm Width : 35.00 mm Thickness : 1.50 mm	
CHKS	Height : 7.50 mm Width : 35.00 mm Thickness : 1.00 mm	
CHS	Height : 15.00 mm Width : 32.00 mm Thickness : 1.50 mm	

DIN Rail, Unperforated

CHKD	Height : 15.00 mm Width : 35.00 mm Thickness : 1.50 mm	
CHK	Height : 7.50 mm Width : 35.00 mm Thickness : 1.00 mm	

End Cap		
CHKENDCAP	Height : 14.00 mm Width : 9.00 mm Length : 41.50 mm	
End Clamp		
SCUP	Height : 34.00 mm Length : 44.75 mm	
SCUSL	Height : 41.10 mm Width : 8.00 mm Length : 47.50 mm	
SCUDD	Height : 50.00 mm Width : 10.00 mm Length : 55.60 mm	
DCKN	Height : 33.00 mm Width : 6.00 mm Length : 43.50 mm	
DCKN10	Height : 35.00 mm Width : 10.00 mm Length : 43.50 mm	
SCKN	Height : 34.50 mm Width : 8.00 mm Length : 44.90 mm	
SCUN	Height : 35.50 mm Width : 9.50 mm Length : 50.60 mm	
Marker For Terminal Blocks		
LABEL KN12	Width : 12.00 mm	
Partition Plate		
KBXF	Height : 53.40 mm Thickness : 1.50 mm Length : 54.00 mm	

Marker carriers		
SCUDDMLH	Height : 71.50 mm Width : 10.00 mm Length : 55.60 mm	
SCUNMLH	Height : 53.50 mm Width : 9.50 mm Length : 50.60 mm	
DCKNMLH	Height : 45.50 mm Width : 6.00 mm Length : 43.50 mm	
SCKNMLH	Height : 45.50 mm Width : 8.00 mm Length : 44.90 mm	

