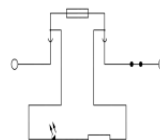
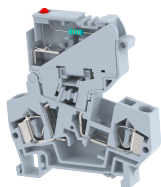


DCF4D1

Terminal Type - DCF4D1 , Fuse terminal block with LED of 24 VDC for fuse failure indication , nominal voltage: 24 V, nominal current: 10 A ,Rated cross-section – 4 mm², suitable size of cartridge fuse : 5X20 mm and 5x25 mm, connection method: Spring Cage connection, number of connections: 2, cross section: 0.5 mm² - 4 mm², AWG: 20 - 10 , mounting type: TS 35/7.5, TS 35/15



Approvals

CE

General Information

Product Name	DCF4D1
Connection Method	Spring Cage Connection
Rating	24 V/10 A/4 mm ² /NAP Nm
HSN Number	85389000
Standard Packing Qty(in No)	50
Country Of Origin	India
Screw thread	NAP

Dimensions & Weight

Width	8 mm	0.31 inch
Length	60 mm	2.36 inch
Height	64.8 mm	2.55 inch
Weight of std. Packing Unit	1 Kg	

Material Data

Insulating Material	Polyamide 6,6
Standard Colour	Gray
Colour Variants	Red , Yellow , Blue , Black , Green , Khakhi ,

Rated Conductor Size


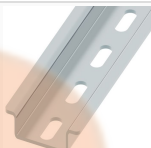
Conductor cross section flexible min	0.5 mm ²
Conductor cross section flexible max	4 mm ²
Conductor cross section solid min	0.5 mm ²
Conductor cross section solid max	4 mm ²

Ratings - IEC

Connection in acc. with standard	IEC 60947-7-3
Nominal Voltage U_n	24 V
Nominal Current I_n	10 A
Nominal cross section	4 mm ²
Short-time current	NAP kA
Rated surge voltage	8 kV
Degree of pollution	3

Product Accessories

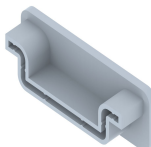
DIN Rail Perforated

CHKDS	Height : 15.00 mm Width : 35.00 mm Thickness : 1.50 mm	
CHKS	Height : 7.50 mm Width : 35.00 mm Thickness : 1.00 mm	

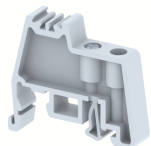
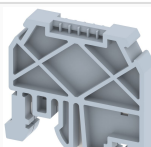
DIN Rail, Unperforated

CHKD	Height : 15.00 mm Width : 35.00 mm Thickness : 1.50 mm	
CHK	Height : 7.50 mm Width : 35.00 mm Thickness : 1.00 mm	

End Cap

CHKENDCAP	Height : 14.00 mm Width : 9.00 mm Length : 41.50 mm	
-----------	---	---

End Clamp

SCUP	Height : 34.00 mm Length : 44.75 mm	
SCUSL	Height : 41.10 mm Width : 8.00 mm Length : 47.50 mm	

End Clamp		
SCUDD	Height : 50.00 mm Width : 10.00 mm Length : 55.60 mm	
DCKN	Height : 33.00 mm Width : 6.00 mm Length : 43.50 mm	
DCKN10	Height : 35.00 mm Width : 10.00 mm Length : 43.50 mm	
SCKN	Height : 34.50 mm Width : 8.00 mm Length : 44.90 mm	
SCUN	Height : 35.50 mm Width : 9.50 mm Length : 50.60 mm	
End Cover		
DFEP	Height : 56.50 mm Width : 2.50 mm Length : 66.00 mm	
Marker For Terminal Blocks		
LABEL KN8	Width : 8.00 mm	
Plug-in Bridge/Jumper		
SSL4	Height : 23.80 mm Width : 6.00 mm Length : 7.50 mm	
Marker carriers		
SCUDDMLH	Height : 71.50 mm Width : 10.00 mm Length : 55.60 mm	
SCUNMLH	Height : 53.50 mm Width : 9.50 mm Length : 50.60 mm	

Marker carriers		
DCKNMLH	Height : 45.50 mm Width : 6.00 mm Length : 43.50 mm	
SCKNMLH	Height : 45.50 mm Width : 8.00 mm Length : 44.90 mm	