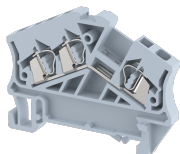


## DCT2.5-1x2

Terminal Type - DCT2.5-1X2, Multi-Conductor terminal block, nominal voltage: 800 V, nominal current: 24 A, Rated cross-section - 2.5 mm<sup>2</sup>, connection method: Spring Cage connection, number of connections: 3, cross-section: 0.5 mm<sup>2</sup> - 2.5 mm<sup>2</sup>, mounting type: TS 35/7.5, TS 35/15 , colour : GREY



### Approvals



### General Information

Product Name	DCT2.5-1x2
Connection Method	Spring Cage Connection
Rating	800 V/24 A/2.5 mm <sup>2</sup> /NAP Nm
HSN Number	85389000
Standard Packing Qty(in No)	100
Country Of Origin	INDIA
Screw thread	NA

### Dimensions & Weight

Width	5 mm	0.2 inch
Length	54 mm	2.13 inch
Height	40.5 mm	1.59 inch
Weight of std. Packing Unit	0.75 Kg	

### Material Data

Insulating Material	Polyamide 6,6
Standard Colour	Gray
Colour Variants	Red , Yellow , Blue , Black , Green , Khakhi , Gray ,

### Rated Conductor Size

Conductor cross section flexible min	0.5 mm <sup>2</sup>
Conductor cross section flexible max	2.5 mm <sup>2</sup>
Conductor cross section solid min	0.5 mm <sup>2</sup>
Conductor cross section solid max	2.5 mm <sup>2</sup>

### Ratings - IEC

Connection in acc. with standard	IEC 60947-7-1
Nominal Voltage $U_n$	800 V
Nominal Current $I_n$	24 A
Nominal cross section	2.5 mm <sup>2</sup>
Short-time current	0.3 kA
Rated surge voltage	8 kV
Degree of pollution	3

### Ratings - ATEX

ATEX Standard	EN 60079-7
ATEX Nominal Voltage $U_n$	630 V
ATEX Nominal Current $I_n$	15 A
ATEX Cross Sec. Flexible Max.	2.5 mm <sup>2</sup>

### Ratings - CSA



CSA Standard	
B - CSA Nominal Voltage $U_N$	0 V
B - CSA Nominal Current $I_N$	0 A
B - CSA Wire Min	AWG
B - CSA Wire Max	AWG

### Ratings - UL

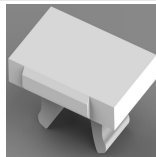
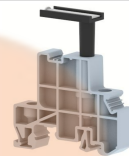
UL Standard	UL 1059
B - UL Nominal Voltage $U_N$	600 V
B - UL Nominal Current $I_N$	15 A
B - UL Wire Min	22 AWG
B - UL Wire Max	14 AWG

### Product Accessories

#### DIN Rail Perforated

CHKDS	Height : 15.00 mm Width : 35.00 mm Thickness : 1.50 mm	
CHKS	Height : 7.50 mm Width : 35.00 mm Thickness : 1.00 mm	

<b>DIN Rail, Unperforated</b>		
CHKD	Height : 15.00 mm Width : 35.00 mm Thickness : 1.50 mm	
CHK	Height : 7.50 mm Width : 35.00 mm Thickness : 1.00 mm	
<b>End Clamp</b>		
SCUP	Height : 34.00 mm Length : 44.75 mm	
SCUSL	Height : 41.10 mm Width : 8.00 mm Length : 47.50 mm	
SCUDD	Height : 50.00 mm Width : 10.00 mm Length : 55.60 mm	
DCKN	Height : 33.00 mm Width : 6.00 mm Length : 43.50 mm	
DCKN10	Height : 35.00 mm Width : 10.00 mm Length : 43.50 mm	
SCKN	Height : 34.50 mm Width : 8.00 mm Length : 44.90 mm	
SCUN	Height : 35.50 mm Width : 9.50 mm Length : 50.60 mm	
<b>End Cover</b>		
DMP2.5	Height : 36.00 mm Width : 1.80 mm Length : 54.00 mm	

<b>Marker For Terminal Blocks</b>		
LABEL KN5	Width : 5.00 mm	
<b>Partition Plate</b>		
DBF-3	Height : 38.40 mm Width : 3.00 mm Length : 78.00 mm	
<b>Plug-in Bridge/Jumper</b>		
SSL2.5	Height : 22.80 mm Width : 4.85 mm Length : 8.40 mm	
<b>Marker carriers</b>		
SCUDDMLH	Height : 71.50 mm Width : 10.00 mm Length : 55.60 mm	
SCUNMLH	Height : 53.50 mm Width : 9.50 mm Length : 50.60 mm	
DCKNMLH	Height : 45.50 mm Width : 6.00 mm Length : 43.50 mm	
SCKNMLH	Height : 45.50 mm Width : 8.00 mm Length : 44.90 mm	