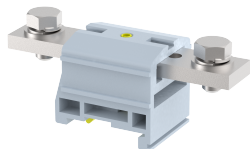


## DPBB120

Terminal Type - DPBB120 , High Current connectors, nominal voltage: 1000 V, nominal current: 269 A, Rated cross-section - 120 mm<sup>2</sup>, connection method: Bolt connection, number of connections: 2, cross-section: 25 mm<sup>2</sup> - 120 mm<sup>2</sup> , AWG: 4 - 3/0, mounting type: TS 35/7.5, TS 35/15 , TS 32



### Approvals



### General Information

Product Name	DPBB120
Connection Method	Bolt Connection
Rating	1000 V/269 A/120 mm <sup>2</sup> /6 Nm
HSN Number	85389000
Standard Packing Qty(in No)	10
Country Of Origin	India
Screw thread	M8

### Dimensions & Weight

Width	37 mm	1.46 inch
Length	100 mm	3.94 inch
Height	44 mm	1.73 inch
Weight of std. Packing Unit	1.61 Kg	

### Material Data

Insulating Material	Polyamide 6,6
Standard Colour	Gray
Colour Variants	Red , Yellow , Blue , Black , Green , Khakhi ,

### Rated Conductor Size

Conductor cross section flexible min	25 mm <sup>2</sup>
Conductor cross section flexible max	120 mm <sup>2</sup>
Conductor cross section solid min	25 mm <sup>2</sup>
Conductor cross section solid max	120 mm <sup>2</sup>

**Ratings - IEC**

Connection in acc. with standard	IEC 60947-7-1
Nominal Voltage $U_n$	1000 V
Nominal Current $I_n$	269 A
Nominal cross section	120 mm <sup>2</sup>
Short-time current	14.40 kA
Rated surge voltage	12 kV
Degree of pollution	3

**Ratings - ATEX**

ATEX Standard	EN 60079-7
ATEX Nominal Voltage $U_n$	1000 V
ATEX Nominal Current $I_n$	250 A
ATEX Cross Sec. Flexible Max.	120 mm <sup>2</sup>


**Ratings - CSA**


CSA Standard	CSA C22.2 NO 158
B - CSA Nominal Voltage $U_n$	600 V
B - CSA Nominal Current $I_n$	230 A
B - CSA Wire Min	3 AWG
B - CSA Wire Max	4/0 AWG



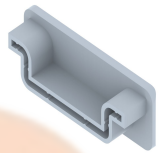
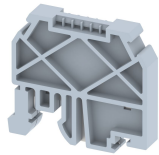
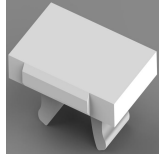
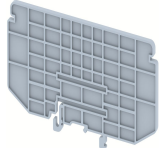
**Ratings - UL**

UL Standard	UL 1059
B - UL Nominal Voltage $U_n$	600 V
B - UL Nominal Current $I_n$	230 A
B - UL Wire Min	3 AWG
B - UL Wire Max	4/0 AWG

**Product Accessories**

Cover Profile		
PCP120	Width : 41.00 mm Thickness : 1.50 mm Length : 126.00 mm	

DIN Rail Perforated		
CHKDS	Height : 15.00 mm Width : 35.00 mm Thickness : 1.50 mm	

<b>DIN Rail Perforated</b>		
CHKS	Height : 7.50 mm Width : 35.00 mm Thickness : 1.00 mm	
<b>DIN Rail, Unperforated</b>		
CHKD	Height : 15.00 mm Width : 35.00 mm Thickness : 1.50 mm	
CHK	Height : 7.50 mm Width : 35.00 mm Thickness : 1.00 mm	
<b>End Cap</b>		
CHKENDCAP	Height : 14.00 mm Width : 9.00 mm Length : 41.50 mm	
<b>End Clamp</b>		
SCUP	Height : 34.00 mm Length : 44.75 mm	
SCUDD	Height : 50.00 mm Width : 10.00 mm Length : 55.60 mm	
SCUSL	Height : 41.10 mm Width : 8.00 mm Length : 47.50 mm	
<b>Marker For Terminal Blocks</b>		
LABEL KN10	Width : 10.00 mm	
<b>Partition Plate</b>		
BPN 120	Height : 102.50 mm Width : 3.00 mm Length : 125.00 mm	

<b>Marker carriers</b>		
SCUDDMLH	Height : 71.50 mm Width : 10.00 mm Length : 55.60 mm	

