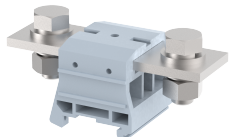


DPBB185N

Terminal Type - DPBB185N, High Current connectors, nominal voltage: 1000 V, Rated cross-section - 185 mm², nominal current: 353 A, connection method: Bolt connection, number of connections: 2, cross-section: 70 mm² - 185 mm², mounting type: TS 35/15, TS 32



Approvals

CE

General Information

Product Name	DPBB185N
Connection Method	Bolt Connection
Rating	1000 V/353 A/185 mm ² /14 Nm
HSN Number	85389000
Standard Packing Qty(in No)	4
Country Of Origin	India
Screw thread	M12

Dimensions & Weight

Width	53 mm	2.09 inch
Length	125 mm	4.92 inch
Height	55 mm	2.17 inch
Weight of std. Packing Unit	1.49 Kg	

Material Data

Insulating Material	Polyamide 6,6
Standard Colour	Gray
Colour Variants	Red , Yellow , Blue , Black , Green , Khakhi ,

Rated Conductor Size

Conductor cross section flexible min	70 mm ²
Conductor cross section flexible max	185 mm ²
Conductor cross section solid min	70 mm ²
Conductor cross section solid max	185 mm ²

Ratings - IEC

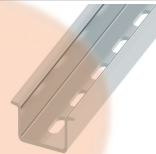
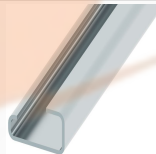
Connection in acc. with standard	IEC 60947-7-1
Nominal Voltage U_n	1000 V
Nominal Current I_n	353 A
Nominal cross section	185 mm ²
Short-time current	22.2 kA
Rated surge voltage	12 kV
Degree of pollution	3

Product Accessories

Cover Profile

PCP240-2W	Width : 111.00 mm Thickness : 1.50 mm Length : 186.00 mm	
-----------	----------------------------------------------------------------	-------------------------------------------------------------------------------------

DIN Rail Perforated

CHKDS	Height : 15.00 mm Width : 35.00 mm Thickness : 1.50 mm	
CHS	Height : 15.00 mm Width : 32.00 mm Thickness : 1.50 mm	

DIN Rail, Unperforated

CHKD	Height : 15.00 mm Width : 35.00 mm Thickness : 1.50 mm	
------	--------------------------------------------------------------	---------------------------------------------------------------------------------------

End Cap

CHKENDCAP	Height : 14.00 mm Width : 9.00 mm Length : 41.50 mm	
-----------	-----------------------------------------------------------	---------------------------------------------------------------------------------------

End Clamp

SCUP	Height : 34.00 mm Length : 44.75 mm	
SCUDD	Height : 50.00 mm Width : 10.00 mm Length : 55.60 mm	

End Clamp		
SCUSL	Height : 41.10 mm Width : 8.00 mm Length : 47.50 mm	
Marker For Terminal Blocks		
LABEL KN10	Width : 10.00 mm	
Partition Plate		
BPA 185/240	Height : 82.40 mm Width : 3.00 mm Length : 180.00 mm	
Marker carriers		
SCUDDMLH	Height : 71.50 mm Width : 10.00 mm Length : 55.60 mm	

