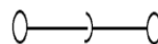
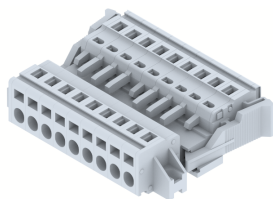


DPSC5.08PM-9W

Terminal Type - DPSC5.08PM - 9W , Plug & socket type terminal block , nominal voltage: 250 V, nominal current: 16 A, connection method: Spring cage connection , number of connections: 18, cross section: 0.2 mm² - 2.5 mm², Rated Cross section - 2.5 mm² , mounting type: Panel mounting / Surface mounting



Approvals

CE

General Information

Product Name	DPSC5.08PM-9W
Connection Method	Spring Cage Connection
Rating	250 V/16 A/2.5 mm ² / Nm
HSN Number	85389000
Standard Packing Qty(in No)	50
Country Of Origin	India
Screw thread	NAV

Dimensions & Weight

Width	61.61 mm	2.43 inch
Length	45.25 mm	1.78 inch
Height	14.45 mm	0.57 inch
Weight of std. Packing Unit	1.75 Kg	

Material Data

Insulating Material	Polyamide 6,6
Standard Colour	Gray
Colour Variants	Red , Yellow , Blue , Black , Green , Khakhi ,

Rated Conductor Size

Conductor cross section flexible min	0.2 mm ²
Conductor cross section flexible max	2.5 mm ²
Conductor cross section solid min	0.2 mm ²
Conductor cross section solid max	2.5 mm ²

Ratings - IEC

Connection in acc. with standard	IEC 60947-7-1
Nominal Voltage U_n	250 V
Nominal Current I_n	16 A
Nominal cross section	2.5 mm ²
Short-time current	0.18 kA
Rated surge voltage	4.5 kV
Degree of pollution	3

Product Accessories

Marker For Terminal Blocks		
LABEL KN5.08	Pitch : 5.08 mm	

Tool		
DPSCCOT	Height : 6.90 mm Width : 5.00 mm Length : 20.30 mm	

