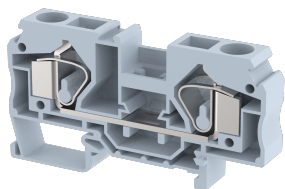


DST16

Terminal Type - DST16 , Feed-through terminal block, nominal voltage: 800 V, nominal current: 76 A, Rated cross-section -16 mm², connection method: Spring Cage Connection, number of connections: 2, cross section: 1.5 mm² - 16 mm², AWG: 16 - 6, mounting type: TS 35/7.5, TS 35/15



Approvals



General Information

Product Name	DST16
Connection Method	Spring Cage Connection
Rating	800 V/76 A/16 mm ² /NAP Nm
HSN Number	85389000
Standard Packing Qty(in No)	50
Country Of Origin	India
Screw thread	NA

Dimensions & Weight

Width	12 mm	0.47 inch
Length	81.8 mm	3.22 inch
Height	43.5 mm	1.71 inch
Weight of std. Packing Unit	1.7 Kg	

Material Data

Insulating Material	Polyamide 6,6
Standard Colour	Gray
Colour Variants	Red , Yellow , Blue , Black , Green , Khakhi ,

Rated Conductor Size

Conductor cross section flexible min	1.5 mm ²
Conductor cross section flexible max	16 mm ²
Conductor cross section solid min	1.5 mm ²
Conductor cross section solid max	16 mm ²

Ratings - IEC

Connection in acc. with standard	IEC 60947-7-1
Nominal Voltage U_n	800 V
Nominal Current I_n	76 A
Nominal cross section	16 mm ²
Short-time current	1.92 kA
Rated surge voltage	8 kV
Degree of pollution	3

Ratings - ATEX

ATEX Standard	
ATEX Nominal Voltage U_n	0 V
ATEX Nominal Current I_n	0 A
ATEX Cross Sec. Flexible Max.	0 mm ²

Ratings - CSA


CSA Standard	CSA C22.2 NO 158
B - CSA Nominal Voltage U_n	600 V
B - CSA Nominal Current I_n	65 A
B - CSA Wire Min	16 AWG
B - CSA Wire Max	6 AWG

Ratings - UL

UL Standard	
B - UL Nominal Voltage U_n	0 V
B - UL Nominal Current I_n	0 A
B - UL Wire Min	AWG
B - UL Wire Max	AWG

Product Accessories

DIN Rail Perforated

CHKDS	Height : 15.00 mm Width : 35.00 mm Thickness : 1.50 mm	
CHKS	Height : 7.50 mm Width : 35.00 mm Thickness : 1.00 mm	

DIN Rail, Unperforated		
CHKD	Height : 15.00 mm Width : 35.00 mm Thickness : 1.50 mm	
CHK	Height : 7.50 mm Width : 35.00 mm Thickness : 1.00 mm	
End Cap		
CHKENDCAP	Height : 14.00 mm Width : 9.00 mm Length : 41.50 mm	
End Clamp		
SCUP	Height : 34.00 mm Length : 44.75 mm	
SCUSL	Height : 41.10 mm Width : 8.00 mm Length : 47.50 mm	
SCUDD	Height : 50.00 mm Width : 10.00 mm Length : 55.60 mm	
DCKN	Height : 33.00 mm Width : 6.00 mm Length : 43.50 mm	
DCKN10	Height : 35.00 mm Width : 10.00 mm Length : 43.50 mm	
SCKN	Height : 34.50 mm Width : 8.00 mm Length : 44.90 mm	
SCUN	Height : 35.50 mm Width : 9.50 mm Length : 50.60 mm	

End Cover		
DSEP16	Height : 36.50 mm Width : 2.50 mm Length : 81.80 mm	
Marker For Terminal Blocks		
LABEL KN12	Width : 12.00 mm	
Partition Plate		
DBF-4	Height : 45.40 mm Thickness : 3.00 mm Length : 90.00 mm	
Plug-in Bridge/Jumper		
SSL16	Height : 32.60 mm Width : 10.40 mm Length : 11.30 mm	
Marker carriers		
SCUDDMLH	Height : 71.50 mm Width : 10.00 mm Length : 55.60 mm	
SCUNMLH	Height : 53.50 mm Width : 9.50 mm Length : 50.60 mm	
DCKNMLH	Height : 45.50 mm Width : 6.00 mm Length : 43.50 mm	
SCKNMLH	Height : 45.50 mm Width : 8.00 mm Length : 44.90 mm	