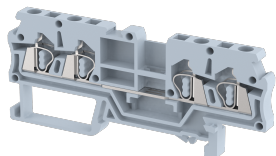


DST2.5-2X2

Terminal Type - DST2.5-2X2 , Multi-Conductor terminal block, nominal voltage: 1000 V, nominal current: 24 A, Rated cross-section - 2.5 mm², connection method: Spring clamp connection, number of connections: 4, cross section: 0.5 mm² - 2.5 mm², mounting type: TS 35/7.5, TS 35/15



Approvals



General Information

Product Name	DST2.5-2X2
Connection Method	Spring Cage Connection
Rating	1000 V/24 A/2.5 mm ² /NAP Nm
HSN Number	85389000
Standard Packing Qty(in No)	100
Country Of Origin	India
Screw thread	NAP

Dimensions & Weight

Width	5 mm	0.2 inch
Length	80 mm	3.15 inch
Height	33 mm	1.3 inch
Weight of std. Packing Unit	1.58 Kg	

Material Data

Insulating Material	Polyamide 6,6
Standard Colour	Gray
Colour Variants	Red , Yellow , Blue , Black , Green , Khakhi ,

Rated Conductor Size

Conductor cross section flexible min	0.5 mm ²
Conductor cross section flexible max	2.5 mm ²
Conductor cross section solid min	0.5 mm ²
Conductor cross section solid max	2.5 mm ²

Ratings - IEC

Connection in acc. with standard	IEC 60947-7-1
Nominal Voltage U_n	1000 V
Nominal Current I_n	24 A
Nominal cross section	2.5 mm ²
Short-time current	0.3 kA
Rated surge voltage	8 kV
Degree of pollution	3

Ratings - ATEX

ATEX Standard	
ATEX Nominal Voltage U_n	V
ATEX Nominal Current I_n	A
ATEX Cross Sec. Flexible Max.	mm ²

Ratings - CSA


CSA Standard	CSA C22.2 NO 158
B - CSA Nominal Voltage U_n	600 V
B - CSA Nominal Current I_n	15 A
B - CSA Wire Min	22 AWG
B - CSA Wire Max	14 AWG

Ratings - UL

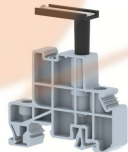
UL Standard	
B - UL Nominal Voltage U_n	V
B - UL Nominal Current I_n	A
B - UL Wire Min	AWG
B - UL Wire Max	AWG

Product Accessories

DIN Rail Perforated

CHKDS	Height : 15.00 mm Width : 35.00 mm Thickness : 1.50 mm	
CHKS	Height : 7.50 mm Width : 35.00 mm Thickness : 1.00 mm	

DIN Rail, Unperforated		
CHKD	Height : 15.00 mm Width : 35.00 mm Thickness : 1.50 mm	
CHK	Height : 7.50 mm Width : 35.00 mm Thickness : 1.00 mm	
End Cap		
CHKENDCAP	Height : 14.00 mm Width : 9.00 mm Length : 41.50 mm	
End Clamp		
SCUP	Height : 34.00 mm Length : 44.75 mm	
SCUSL	Height : 41.10 mm Width : 8.00 mm Length : 47.50 mm	
SCUDD	Height : 50.00 mm Width : 10.00 mm Length : 55.60 mm	
DCKN	Height : 33.00 mm Width : 6.00 mm Length : 43.50 mm	
DCKN10	Height : 35.00 mm Width : 10.00 mm Length : 43.50 mm	
SCKN	Height : 34.50 mm Width : 8.00 mm Length : 44.90 mm	
SCUN	Height : 35.50 mm Width : 9.50 mm Length : 50.60 mm	

End Cover		
DSMP2.5-2x2	Height : 21.50 mm Width : 2.00 mm Length : 80.00 mm	
Marker For Terminal Blocks		
LABEL KN5	Width : 5.00 mm	
Partition Plate		
DBF-4	Height : 45.40 mm Thickness : 3.00 mm Length : 90.00 mm	
Plug-in Bridge/Jumper		
SSL2.5	Height : 22.80 mm Width : 4.85 mm Length : 8.40 mm	
Marker carriers		
SCUDDMLH	Height : 71.50 mm Width : 10.00 mm Length : 55.60 mm	
SCUNMLH	Height : 53.50 mm Width : 9.50 mm Length : 50.60 mm	
DCKNMLH	Height : 45.50 mm Width : 6.00 mm Length : 43.50 mm	
SCKNMLH	Height : 45.50 mm Width : 8.00 mm Length : 44.90 mm	