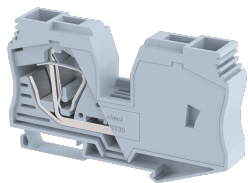


DST35

Terminal Type - DST35 , Feed-through terminal block, nominal voltage: 1000 V, nominal current: 125 A, Rated cross-section – 35 mm², connection method: Spring Cage connection, number of connections: 2, cross section: 6 mm² - 50 mm², mounting type: TS 35/7.5, TS 35/15



Approvals

CE

General Information

Product Name	DST35
Connection Method	Spring Cage Connection
Rating	1000 V/125 A/35 mm ² /NAP Nm
HSN Number	85389000
Standard Packing Qty(in No)	30
Country Of Origin	India
Screw thread	NA

Dimensions & Weight

Width	16 mm	0.63 inch
Length	100 mm	3.94 inch
Height	60.5 mm	2.38 inch
Weight of std. Packing Unit	2.9 Kg	

Material Data

Insulating Material	Polyamide 6,6
Standard Colour	Gray
Colour Variants	Red , Yellow , Blue , Black , Green , Khakhi ,

Rated Conductor Size



Conductor cross section flexible min	6 mm ²
Conductor cross section flexible max	35 mm ²
Conductor cross section solid min	6 mm ²
Conductor cross section solid max	35 mm ²

Ratings - IEC

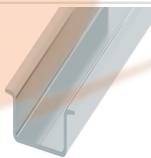

Connection in acc. with standard	IEC 60947-7-1
Nominal Voltage U_n	1000 V
Nominal Current I_n	125 A
Nominal cross section	35 mm ²
Short-time current	3 kA
Rated surge voltage	8 kV
Degree of pollution	3

Product Accessories

DIN Rail Perforated

CHKDS	Height : 15.00 mm Width : 35.00 mm Thickness : 1.50 mm	
CHKS	Height : 7.50 mm Width : 35.00 mm Thickness : 1.00 mm	

DIN Rail, Unperforated

CHKD	Height : 15.00 mm Width : 35.00 mm Thickness : 1.50 mm	
CHK	Height : 7.50 mm Width : 35.00 mm Thickness : 1.00 mm	

End Clamp

SCUP	Height : 34.00 mm Length : 44.75 mm	
SCUDD	Height : 50.00 mm Width : 10.00 mm Length : 55.60 mm	
SCUSL	Height : 41.10 mm Width : 8.00 mm Length : 47.50 mm	
DCKN	Height : 33.00 mm Width : 6.00 mm Length : 43.50 mm	

End Clamp		
DCKN10	Height : 35.00 mm Width : 10.00 mm Length : 43.50 mm	
SCKN	Height : 34.50 mm Width : 8.00 mm Length : 44.90 mm	
SCUN	Height : 35.50 mm Width : 9.50 mm Length : 50.60 mm	
Marker For Terminal Blocks		
LABEL KN12	Width : 12.00 mm	
Plug-in Bridge/Jumper		
SSL35	Height : 43.00 mm Width : 13.00 mm Length : 11.30 mm	
Marker carriers		
SCUDDMLH	Height : 71.50 mm Width : 10.00 mm Length : 55.60 mm	
SCUNMLH	Height : 53.50 mm Width : 9.50 mm Length : 50.60 mm	
SCKNMLH	Height : 45.50 mm Width : 8.00 mm Length : 44.90 mm	