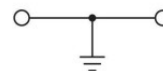
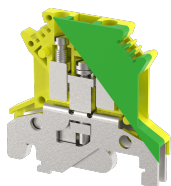


EBT2.5

Terminal Type - EBT2.5, Ground terminal block, connection method: Screw connection, number of connections: 2, Rated cross-section- 2.5 mm², cross-section: 0.2 mm² - 4 mm², AWG: 24 - 14 , mounting type: TS 35/7.5, TS 35/15, TS 32



Approvals



General Information

| | |
|-----------------------------|---|
| Product Name | EBT2.5 |
| Connection Method | Screw Connection |
| Rating | NAP V/NAP A/2.5 mm ² /0.5 Nm |
| HSN Number | 85389000 |
| Standard Packing Qty(in No) | 50 |
| Country Of Origin | India |
| Screw thread | M3 |

Dimensions & Weight

| | | |
|-----------------------------|---------|-----------|
| Width | 6 mm | 0.24 inch |
| Length | 42.5 mm | 1.67 inch |
| Height | 42 mm | 1.65 inch |
| Weight of std. Packing Unit | 1.02 Kg | |

Material Data

| | |
|---------------------|---------------|
| Insulating Material | Polyamide 6,6 |
| Standard Colour | Green-Yellow |
| Colour Variants | |

Rated Conductor Size

| | |
|--------------------------------------|---------------------|
| Conductor cross section flexible min | 0.5 mm ² |
| Conductor cross section flexible max | 2.5 mm ² |
| Conductor cross section solid min | 0.5 mm ² |
| Conductor cross section solid max | 4 mm ² |

Ratings - IEC

| | |
|----------------------------------|---------------------|
| Connection in acc. with standard | IEC 60947-7-2 |
| Nominal Voltage U _n | NAP V |
| Nominal Current I _n | NAP A |
| Nominal cross section | 2.5 mm ² |
| Short-time current | 0.3 kA |
| Rated surge voltage | NAP kV |
| Degree of pollution | 3 |

Ratings - ATEX

| | |
|-------------------------------------|---------------------|
| ATEX Standard | EN 60079-7 |
| ATEX Nominal Voltage U _n | V |
| ATEX Nominal Current I _n | A |
| ATEX Cross Sec. Flexible Max. | 2.5 mm ² |


Ratings - CSA

| | |
|--|-----------------|
| CSA Standard | CSAC22.2 NO 158 |
| B - CSA Nominal Voltage U _N | V |
| B - CSA Nominal Current I _N | A |
| B - CSA Wire Min | 24 AWG |
| B - CSA Wire Max | 12 AWG |

Ratings - UL

| | |
|---------------------------------------|---------|
| UL Standard | UL 1059 |
| B - UL Nominal Voltage U _N | V |
| B - UL Nominal Current I _N | A |
| B - UL Wire Min | 24 AWG |
| B - UL Wire Max | 12 AWG |

Product Accessories

| Cover Profile | | |
|-----------------------|---|---|
| PCK3 | Height : 28.00 mm Width : 58.35 mm Thickness : 1.00 mm |  |
| Cover Profile Carrier | | |
| UHDD | Height : 74.50 mm Thickness : 2.00 mm Length : 55.82 mm |  |

| DIN Rail Perforated | | |
|-------------------------------|--|---|
| CHKDS | Height : 15.00 mm Width : 35.00 mm Thickness : 1.50 mm |  |
| CHKS | Height : 7.50 mm Width : 35.00 mm Thickness : 1.00 mm |  |
| CHS | Height : 15.00 mm Width : 32.00 mm Thickness : 1.50 mm |  |
| DIN Rail, Unperforated | | |
| CHKD | Height : 15.00 mm Width : 35.00 mm Thickness : 1.50 mm |  |
| CHK | Height : 7.50 mm Width : 35.00 mm Thickness : 1.00 mm |  |
| End Cap | | |
| CHKENDCAP | Height : 14.00 mm Width : 9.00 mm Length : 41.50 mm |  |
| End Clamp | | |
| SCUP | Height : 34.00 mm Length : 44.75 mm |  |
| SCUSL | Height : 41.10 mm Width : 8.00 mm Length : 47.50 mm |  |
| SCUDD | Height : 50.00 mm Width : 10.00 mm Length : 55.60 mm |  |
| DCKN | Height : 33.00 mm Width : 6.00 mm Length : 43.50 mm |  |

| End Clamp | | |
|-----------------------------------|---|---|
| DCKN10 | Height : 35.00 mm Width : 10.00 mm Length : 43.50 mm |  |
| SCKN | Height : 34.50 mm Width : 8.00 mm Length : 44.90 mm |  |
| SCUN | Height : 35.50 mm Width : 9.50 mm Length : 50.60 mm |  |
| Marker For Terminal Blocks | | |
| LABEL U6 | Pitch : 6.00 mm |  |
| Partition Plate | | |
| KBXF | Height : 53.40 mm Thickness : 1.50 mm Length : 54.00 mm |  |
| Marker carriers | | |
| SCUDDMLH | Height : 71.50 mm Width : 10.00 mm Length : 55.60 mm |  |
| SCUNMLH | Height : 53.50 mm Width : 9.50 mm Length : 50.60 mm |  |
| DCKNMLH | Height : 45.50 mm Width : 6.00 mm Length : 43.50 mm |  |
| SCKNMLH | Height : 45.50 mm Width : 8.00 mm Length : 44.90 mm |  |