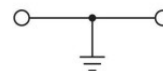
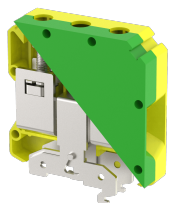


## ET50

Terminal Type - ET50 , Ground modular terminal block , connection method: Screw connection, number of connections: 2, Rated cross-section: 50 mm<sup>2</sup>, cross-section: 16 mm<sup>2</sup> - 50 mm<sup>2</sup>, mounting type: TS 35/7.5, TS 35/15 , TS 32



### Approvals



### General Information

Product Name	ET50
Connection Method	Screw Connection
Rating	NAP V/NAP A/50 mm <sup>2</sup> /3 Nm
HSN Number	85389000
Standard Packing Qty(in No)	10
Country Of Origin	India
Screw thread	M6

### Dimensions & Weight

Width	20.5 mm	0.81 inch
Length	71 mm	2.8 inch
Height	75.3 mm	2.96 inch
Weight of std. Packing Unit	1.94 Kg	

### Material Data

Insulating Material	Polyamide 6,6
Standard Colour	Green-Yellow
Colour Variants	

### Rated Conductor Size

Conductor cross section flexible min	16 mm <sup>2</sup>
Conductor cross section flexible max	50 mm <sup>2</sup>
Conductor cross section solid min	16 mm <sup>2</sup>
Conductor cross section solid max	50 mm <sup>2</sup>

### Ratings - IEC

Connection in acc. with standard	IEC 60947-7-2
Nominal Voltage $U_n$	NAP V
Nominal Current $I_n$	NAP A
Nominal cross section	50 mm <sup>2</sup>
Short-time current	6 kA
Rated surge voltage	NAP kV
Degree of pollution	3

### Ratings - ATEX

ATEX Standard	
ATEX Nominal Voltage $U_n$	0 V
ATEX Nominal Current $I_n$	0 A
ATEX Cross Sec. Flexible Max.	50 mm <sup>2</sup>

### Ratings - CSA

CSA Standard	
B - CSA Nominal Voltage $U_N$	0 V
B - CSA Nominal Current $I_N$	0 A
B - CSA Wire Min	0 AWG
B - CSA Wire Max	0 AWG

### Ratings - UL

UL Standard	
B - UL Nominal Voltage $U_N$	0 V
B - UL Nominal Current $I_N$	0 A
B - UL Wire Min	0 AWG
B - UL Wire Max	0 AWG

### Product Accessories

#### DIN Rail Perforated

CHKDS	Height : 15.00 mm Width : 35.00 mm Thickness : 1.50 mm	
CHKS	Height : 7.50 mm Width : 35.00 mm Thickness : 1.00 mm	
CHS	Height : 15.00 mm Width : 32.00 mm Thickness : 1.50 mm	

<b>DIN Rail, Unperforated</b>		
CHKD	Height : 15.00 mm Width : 35.00 mm Thickness : 1.50 mm	
CHK	Height : 7.50 mm Width : 35.00 mm Thickness : 1.00 mm	
<b>End Cap</b>		
CHKENDCAP	Height : 14.00 mm Width : 9.00 mm Length : 41.50 mm	
<b>End Clamp</b>		
SCUP	Height : 34.00 mm Length : 44.75 mm	
SCUSL	Height : 41.10 mm Width : 8.00 mm Length : 47.50 mm	
SCUDD	Height : 50.00 mm Width : 10.00 mm Length : 55.60 mm	
SCUN	Height : 35.50 mm Width : 9.50 mm Length : 50.60 mm	
<b>Marker For Terminal Blocks</b>		
LABEL KN17	Width : 17.00 mm	
<b>Marker carriers</b>		
SCUDDMLH	Height : 71.50 mm Width : 10.00 mm Length : 55.60 mm	
SCUNMLH	Height : 53.50 mm Width : 9.50 mm Length : 50.60 mm	

**Marker carriers**

SCKNMLH

Height : 45.50 mm  
Width : 8.00 mm  
Length : 44.90 mm

