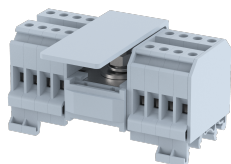


FDBK1X8

Terminal Type - FDBK1X8 , Distribution Block, nominal voltage: 800 V, nominal current: IC-64 A , OG-32 A , Rated cross-section - IC-25 mm² ,OG-4 mm², connection method: 1 Nut connection for IC & Screw connection for OG, number of connections: 17, cross-section: IC-10 -25 mm², OG-0.5 - 6 mm², mounting type: TS 35/7.5, TS 35/15, TS 32



Approvals



General Information

Product Name	FDBK1X8
Connection Method	1 nut connection for IC & Screw clamp connection for OG
Rating	800 V/IC-64 A, OG-32 A/IC-25 mm ² , OG-4 mm ² /IC-2.5 Nm , OG-0.5 Nm
HSN Number	85389000
Standard Packing Qty(in No)	10
Country Of Origin	India
Screw thread	IC-M6 , OG-M3

Dimensions & Weight

Width	88.5 mm	3.48 inch
Length	67.5 mm	2.66 inch
Height	55 mm	2.17 inch
Weight of std. Packing Unit	1.47 Kg	

Material Data

Insulating Material	Polyamide 6,6
Standard Colour	Gray
Colour Variants	Red , Yellow , Blue , Black , Green , Khakhi , Gray ,

Rated Conductor Size

Conductor cross section flexible min	IC-10 mm ² , OG-0.5 mm ²
Conductor cross section flexible max	IC-25 mm ² , OG-4 mm ²
Conductor cross section solid min	IC-10 mm ² , OG-0.5 mm ²
Conductor cross section solid max	IC-25 mm ² , OG-6 mm ²

Ratings - IEC

Connection in acc. with standard	IEC 60947-7-1
Nominal Voltage U_n	800 V
Nominal Current I_n	IC-64 A, OG-32 A
Nominal cross section	IC-25 mm ² , OG-4 mm ²
Short-time current	3 kA
Rated surge voltage	8 kV
Degree of pollution	3

Ratings - ATEX

ATEX Standard	
ATEX Nominal Voltage U_n	0 V
ATEX Nominal Current I_n	A
ATEX Cross Sec. Flexible Max.	mm ²

Ratings - CSA

CSA Standard	
B - CSA Nominal Voltage U_N	0 V
B - CSA Nominal Current I_N	A
B - CSA Wire Min	AWG
B - CSA Wire Max	AWG

Ratings - UL

UL Standard	UL 1059
B - UL Nominal Voltage U_N	600 V
B - UL Nominal Current I_N	IC-80 A , OG-80 A
B - UL Wire Min	IC-12 AWG , OG-20 AWG
B - UL Wire Max	IC-4 AWG , OG-10 AWG

Product Accessories

DIN Rail Perforated		
CHKDS	Height : 15.00 mm Width : 35.00 mm Thickness : 1.50 mm	
CHKS	Height : 7.50 mm Width : 35.00 mm Thickness : 1.00 mm	
CHS	Height : 15.00 mm Width : 32.00 mm Thickness : 1.50 mm	

DIN Rail, Unperforated		
CHKD	Height : 15.00 mm Width : 35.00 mm Thickness : 1.50 mm	
CHK	Height : 7.50 mm Width : 35.00 mm Thickness : 1.00 mm	
End Cap		
CHKENDCAP	Height : 14.00 mm Width : 9.00 mm Length : 41.50 mm	
End Clamp		
SCUP	Height : 34.00 mm Length : 44.75 mm	
SCUSL	Height : 41.10 mm Width : 8.00 mm Length : 47.50 mm	
SCUDD	Height : 50.00 mm Width : 10.00 mm Length : 55.60 mm	
DCKN	Height : 33.00 mm Width : 6.00 mm Length : 43.50 mm	
DCKN10	Height : 35.00 mm Width : 10.00 mm Length : 43.50 mm	
SCKN	Height : 34.50 mm Width : 8.00 mm Length : 44.90 mm	
SCUN	Height : 35.50 mm Width : 9.50 mm Length : 50.60 mm	

Marker For Terminal Blocks		
LABEL KN6.5	Width : 6.70 mm	
Partition Plate		
DBF-4	Height : 45.40 mm Thickness : 3.00 mm Length : 90.00 mm	
KBXF	Height : 53.40 mm Thickness : 1.50 mm Length : 54.00 mm	
KBX	Height : 43.00 mm Thickness : 1.50 mm Length : 54.00 mm	
Marker carriers		
SCUDDMLH	Height : 71.50 mm Width : 10.00 mm Length : 55.60 mm	
SCUNMLH	Height : 53.50 mm Width : 9.50 mm Length : 50.60 mm	
DCKNMLH	Height : 45.50 mm Width : 6.00 mm Length : 43.50 mm	
SCKNMLH	Height : 45.50 mm Width : 8.00 mm Length : 44.90 mm	