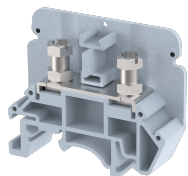


## KABTM4

Terminal Type - KABTM4 , Feed Through Terminal Block , nominal voltage: 1000 V, nominal current: 57 A, connection method: Bolt Connection - Screw and Nut driver operated, number of connections: 2, cross section: 0.5 mm<sup>2</sup> - 10 mm<sup>2</sup>, mounting type: TS 35/7.5, TS 35/15 , TS 32



### Approvals

CE

### General Information

Product Name	KABTM4
Connection Method	Bolt Connection
Rating	1000 V/57 A/10 mm <sup>2</sup> /1.2 Nm
HSN Number	85389000
Standard Packing Qty(in No)	50
Country Of Origin	INDIA
Screw thread	M4

### Dimensions & Weight

Width	13 mm	0.51 inch
Length	50 mm	1.97 inch
Height	41.4 mm	1.63 inch
Weight of std. Packing Unit	0.97 Kg	

### Material Data

Insulating Material	Polyamide 6,6
Standard Colour	Gray
Colour Variants	Red , Yellow , Blue , Black , Green , Khakhi , Gray ,

### Rated Conductor Size




Conductor cross section flexible min	0.5 mm <sup>2</sup>
Conductor cross section flexible max	10 mm <sup>2</sup>
Conductor cross section solid min	0.5 mm <sup>2</sup>
Conductor cross section solid max	10 mm <sup>2</sup>

**Ratings - IEC**

Connection in acc. with standard	IEC 60947-7-1
Nominal Voltage $U_n$	1000 V
Nominal Current $I_n$	57 A
Nominal cross section	10 mm <sup>2</sup>
Short-time current	1.2 kA
Rated surge voltage	8 kV
Degree of pollution	3

**Product Accessories**

**Cover Profile**

PCC3K		
PCCM26K		
PCCM39K		

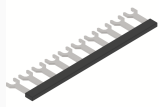
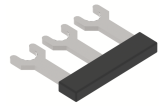
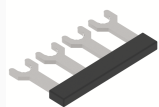
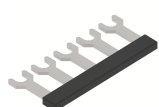
**DIN Rail Perforated**

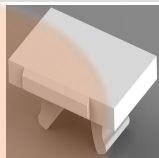
CHKDS	Height : 15.00 mm Width : 35.00 mm Thickness : 1.50 mm	
CHKS	Height : 7.50 mm Width : 35.00 mm Thickness : 1.00 mm	
CHS	Height : 15.00 mm Width : 32.00 mm Thickness : 1.50 mm	

**DIN Rail, Unperforated**

CHKD	Height : 15.00 mm Width : 35.00 mm Thickness : 1.50 mm	
CHK	Height : 7.50 mm Width : 35.00 mm Thickness : 1.00 mm	

<b>End Cap</b>		
CHKENDCAP	Height : 14.00 mm Width : 9.00 mm Length : 41.50 mm	
<b>End Clamp</b>		
SCUP	Height : 34.00 mm Length : 44.75 mm	
SCUSL	Height : 41.10 mm Width : 8.00 mm Length : 47.50 mm	
SCUDD	Height : 50.00 mm Width : 10.00 mm Length : 55.60 mm	
DCKN	Height : 33.00 mm Width : 6.00 mm Length : 43.50 mm	
DCKN10	Height : 35.00 mm Width : 10.00 mm Length : 43.50 mm	
SCKN	Height : 34.50 mm Width : 8.00 mm Length : 44.90 mm	
SCUN	Height : 35.50 mm Width : 9.50 mm Length : 50.60 mm	
<b>End Cover</b>		
KPS4	Height : 32.00 mm Width : 1.50 mm Length : 50.00 mm	
<b>Insertion Bridge</b>		
KSL4-2W	Width : 20.50 mm Pitch : 13.00 mm Length : 27.50 mm	

Insertion Bridge		
KSL4-10W	Width : 124.50 mm Pitch : 13.00 mm Length : 26.50 mm	
KSL4-3W	Width : 33.50 mm Pitch : 13.00 mm Length : 26.50 mm	
KSL4-4W	Width : 46.50 mm Pitch : 13.00 mm Length : 26.50 mm	
KSL4-5W	Width : 59.50 mm Pitch : 13.00 mm Length : 26.20 mm	

Marker For Terminal Blocks		
LABEL KN6.5	Width : 6.70 mm	

Partition Plate		
KBXF	Height : 53.40 mm Thickness : 1.50 mm Length : 54.00 mm	

Marker carriers		
SCUDDMLH	Height : 71.50 mm Width : 10.00 mm Length : 55.60 mm	