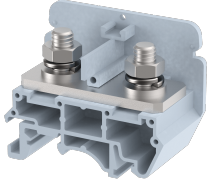


## KBT100

Terminal Type - KBT100 , Feed through Terminal Block, nominal voltage: 800 V, nominal current: 125 A, connection method: Bolt Connection - Nut driver operated, number of connections: 2, cross section: 6 mm<sup>2</sup> - 35 mm<sup>2</sup>, width: 26 mm , length: 52 mm , height : 41.4 mm , mounting type: TS 35/7.5, TS 35/15 , TS 32



### Approvals

|    |
|----|
| CE |
|----|

### General Information

|                             |  |
|-----------------------------|--|
| Product Name                | KBT100                                 |
| Connection Method           | Bolt Connection                        |
| Rating                      | 800 V/125 A/35 mm <sup>2</sup> /2.5 Nm |
| HSN Number                  | 85389000                               |
| Standard Packing Qty(in No) | 25                                     |
| Country Of Origin           | INDIA                                  |
| Screw thread                | M6                                     |

### Dimensions & Weight

|                             |         |           |
|-----------------------------|---------|-----------|
| Width                       | 26 mm   | 1.02 inch |
| Length                      | 52 mm   | 2.05 inch |
| Height                      | 41.4 mm | 1.63 inch |
| Weight of std. Packing Unit | 1.29 Kg |           |

### Material Data

|                     |  |
|---------------------|--|
| Insulating Material | Polyamide 6,6                                  |
| Standard Colour     | Gray   |
| Colour Variants     | Red , Yellow , Blue , Black , Green , Khakhi , |

### Rated Conductor Size



|                                      |                    |
|--------------------------------------|--------------------|
| Conductor cross section flexible min | 6 mm <sup>2</sup>  |
| Conductor cross section flexible max | 35 mm <sup>2</sup> |
| Conductor cross section solid min    | 6 mm <sup>2</sup>  |
| Conductor cross section solid max    | 35 mm <sup>2</sup> |

### Ratings - IEC

|                                  |                    |
|----------------------------------|--------------------|
| Connection in acc. with standard | IEC 60947-7-1      |
| Nominal Voltage $U_n$            | 800 V              |
| Nominal Current $I_n$            | 125 A              |
| Nominal cross section            | 35 mm <sup>2</sup> |
| Short-time current               | 4.2 kA             |
| Rated surge voltage              | 8 kV               |
| Degree of pollution              | 3                  |

### Product Accessories

#### Cover Profile

|         |  |  |
|---------|--|--|
| PCCM52K | Width : 52.00 mm<br>Thickness : 1.25 mm<br>Length : 49.40 mm |   |
| PCCM78K | Width : 78.00 mm<br>Thickness : 1.40 mm<br>Length : 49.70 mm |  |

#### DIN Rail Perforated

|       |  |   |
|-------|--|---|
| CHKDS | Height : 15.00 mm<br>Width : 35.00 mm<br>Thickness : 1.50 mm |  |
| CHKS  | Height : 7.50 mm<br>Width : 35.00 mm<br>Thickness : 1.00 mm  |  |
| CHS   | Height : 15.00 mm<br>Width : 32.00 mm<br>Thickness : 1.50 mm |  |

#### DIN Rail, Unperforated

|      |  |   |
|------|--|---|
| CHKD | Height : 15.00 mm<br>Width : 35.00 mm<br>Thickness : 1.50 mm |  |
| CHK  | Height : 7.50 mm<br>Width : 35.00 mm<br>Thickness : 1.00 mm  |  |

| End Cap                    |  |   |
|----------------------------|--|---|
| CHKENDCAP                  | Height : 14.00 mm<br>Width : 9.00 mm<br>Length : 41.50 mm  |    |
| End Clamp                  |  |   |
| SCUP                       | Height : 34.00 mm<br>Length : 44.75 mm                     |    |
| SCUSL                      | Height : 41.10 mm<br>Width : 8.00 mm<br>Length : 47.50 mm  |    |
| SCUDD                      | Height : 50.00 mm<br>Width : 10.00 mm<br>Length : 55.60 mm |    |
| DCKN                       | Height : 33.00 mm<br>Width : 6.00 mm<br>Length : 43.50 mm  |   |
| DCKN10                     | Height : 35.00 mm<br>Width : 10.00 mm<br>Length : 43.50 mm |  |
| SCKN                       | Height : 34.50 mm<br>Width : 8.00 mm<br>Length : 44.90 mm  |  |
| SCUN                       | Height : 35.50 mm<br>Width : 9.50 mm<br>Length : 50.60 mm  |  |
| End Cover                  |  |   |
| KPS100                     | Height : 32.00 mm<br>Width : 1.50 mm<br>Length : 52.00 mm  |  |
| Marker For Terminal Blocks |  |   |
| LABEL KN6.5                | Width : 6.70 mm  |  |

| Partition Plate |   |   |
|-----------------|---|---|
| KBXF            | Height : 53.40 mm<br>Thickness : 1.50 mm<br>Length : 54.00 mm |  |

| Marker carriers |  |  |
|-----------------|--|--|
| SCUDDMLH        | Height : 71.50 mm<br>Width : 10.00 mm<br>Length : 55.60 mm |   |
| SCUNMLH         | Height : 53.50 mm<br>Width : 9.50 mm<br>Length : 50.60 mm  |   |
| DCKNMLH         | Height : 45.50 mm<br>Width : 6.00 mm<br>Length : 43.50 mm  |   |
| SCKNMLH         | Height : 45.50 mm<br>Width : 8.00 mm<br>Length : 44.90 mm  |  |

