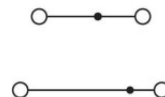
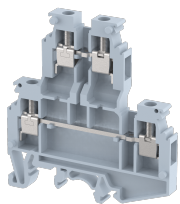


KUDD4N

Terminal Type - KUDD4N , Multi level terminal block for photo voltaic applications, nominal voltage: 630 V, nominal current: 28 A, connection method: Screw connection, number of connections: 4, cross section: 0.5 mm² - 4 mm², AWG: 20 - 12 , mounting type: TS 35/7.5, TS 35/15 , TS 32



Approvals



General Information

Product Name	KUDD4N
Connection Method	Screw Connection
Rating	630 V/28 A/4 mm ² /0.5 Nm
HSN Number	85389000
Standard Packing Qty(in No)	100
Country Of Origin	INDIA
Screw thread	M3

Dimensions & Weight

Width	6 mm	0.24 inch
Length	62.5 mm	2.46 inch
Height	65.4 mm	2.57 inch
Weight of std. Packing Unit	1.7 Kg	

Material Data

Insulating Material	Polyamide 6,6
Standard Colour	Gray
Colour Variants	Red , Yellow , Blue , Black , Green , Khakhi ,

Rated Conductor Size

Conductor cross section flexible min	0.5 mm ²
Conductor cross section flexible max	4 mm ²
Conductor cross section solid min	0.5 mm ²
Conductor cross section solid max	4 mm ²

Ratings - IEC

Connection in acc. with standard	IEC 60947-7-1
Nominal Voltage U_n	630 V
Nominal Current I_n	28 A
Nominal cross section	4 mm ²
Short-time current	0.48 kA
Rated surge voltage	8 kV
Degree of pollution	3

Ratings - ATEX

ATEX Standard	
ATEX Nominal Voltage U_n	0 V
ATEX Nominal Current I_n	0 A
ATEX Cross Sec. Flexible Max.	0 mm ²

Ratings - CSA

CSA Standard	
B - CSA Nominal Voltage U_N	0 V
B - CSA Nominal Current I_N	0 A
B - CSA Wire Min	0 AWG
B - CSA Wire Max	0 AWG

Ratings - UL

UL Standard	UL 1059
B - UL Nominal Voltage U_N	300 V
B - UL Nominal Current I_N	20 A
B - UL Wire Min	20 AWG
B - UL Wire Max	12 AWG

Product Accessories

DIN Rail Perforated		
CHKDS	Height : 15.00 mm Width : 35.00 mm Thickness : 1.50 mm	
CHKS	Height : 7.50 mm Width : 35.00 mm Thickness : 1.00 mm	
CHS	Height : 15.00 mm Width : 32.00 mm Thickness : 1.50 mm	

DIN Rail, Unperforated		
CHKD	Height : 15.00 mm Width : 35.00 mm Thickness : 1.50 mm	
CHK	Height : 7.50 mm Width : 35.00 mm Thickness : 1.00 mm	
End Cap		
CHKENDCAP	Height : 14.00 mm Width : 9.00 mm Length : 41.50 mm	
End Clamp		
SCUP	Height : 34.00 mm Length : 44.75 mm	
SCUSL	Height : 41.10 mm Width : 8.00 mm Length : 47.50 mm	
SCUDD	Height : 50.00 mm Width : 10.00 mm Length : 55.60 mm	
DCKN	Height : 33.00 mm Width : 6.00 mm Length : 43.50 mm	
DCKN10	Height : 35.00 mm Width : 10.00 mm Length : 43.50 mm	
SCKN	Height : 34.50 mm Width : 8.00 mm Length : 44.90 mm	
SCUN	Height : 35.50 mm Width : 9.50 mm Length : 50.60 mm	

End Cover		
KPDDN	Height : 62.50 mm Width : 1.50 mm Length : 56.00 mm	
Fixed Bridge		
CCLADDN-2W	Height : 14.00 mm Pitch : 6.00 mm Length : 11.00 mm	
CCLADDN-10W	Height : 14.00 mm Pitch : 6.00 mm Length : 59.00 mm	
CCLADDN-3W	Height : 14.00 mm Pitch : 6.00 mm Length : 17.00 mm	
CCLADDN-4W	Height : 14.00 mm Pitch : 6.00 mm Length : 23.00 mm	
CCLADDN-6W	Height : 14.00 mm Pitch : 6.00 mm Length : 35.00 mm	
Insertion Bridge		
SLC4N-10W	Width : 58.60 mm Pitch : 6.00 mm Length : 23.00 mm	
SLC4N-3W	Width : 16.65 mm Pitch : 6.00 mm Length : 23.00 mm	
SLC4N-4W	Width : 22.65 mm Pitch : 6.00 mm Length : 23.00 mm	
SLC4N-5W	Width : 28.65 mm Pitch : 6.00 mm Length : 23.00 mm	
SLC4N-6W	Width : 34.60 mm Pitch : 6.00 mm Length : 23.00 mm	

Insertion Bridge		
SLC4N-2W	Width : 10.91 mm Pitch : 6.00 mm Length : 23.00 mm	
Marker For Terminal Blocks		
LABEL KN5.5	Width : 6.00 mm	
Marker carriers		
SCUDDMLH	Height : 71.50 mm Width : 10.00 mm Length : 55.60 mm	
SCUNMLH	Height : 53.50 mm Width : 9.50 mm Length : 50.60 mm	
DCKNMLH	Height : 45.50 mm Width : 6.00 mm Length : 43.50 mm	
SCKNMLH	Height : 45.50 mm Width : 8.00 mm Length : 44.90 mm	