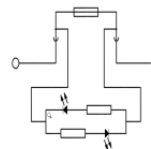
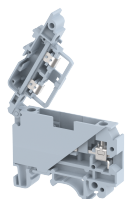


## KUDF4AD12V

Terminal Type - KUDF4AD12V, Fuse terminal block with LED for 12VAC/VDC, nominal voltage: 12 V, nominal current: 6.3 A, Rated cross-section - 4 mm<sup>2</sup>, suitable size of cartridge fuse: 5X20 mm and 5x25 mm , connection method: Screw connection, number of connections: 2, cross-section: 0.5 mm<sup>2</sup> - 4 mm<sup>2</sup>, mounting type: TS 35/7.5 , TS 35/15 , TS 32



### Approvals

CE

### General Information

Product Name	KUDF4AD12V
Connection Method	Screw Connection
Rating	12 V/6.3 A/4 mm <sup>2</sup> /0.4 Nm
HSN Number	85389000
Standard Packing Qty(in No)	100
Country Of Origin	India
Screw thread	M3

### Dimensions & Weight

Width	8 mm	0.31 inch
Length	54.5 mm	2.15 inch
Height	47.8 mm	1.88 inch
Weight of std. Packing Unit	1.53 Kg	

### Material Data

Insulating Material	Polyamide 6,6
Standard Colour	Gray
Colour Variants	Red , Yellow , Blue , Black , Green , Khakhi ,

### Rated Conductor Size

Conductor cross section flexible min	0.5 mm <sup>2</sup>
Conductor cross section flexible max	4 mm <sup>2</sup>
Conductor cross section solid min	0.5 mm <sup>2</sup>
Conductor cross section solid max	4 mm <sup>2</sup>

## Ratings - IEC



Connection in acc. with standard	IEC-60947-7-3
Nominal Voltage $U_n$	12 V
Nominal Current $I_n$	6.3 A
Nominal cross section	4 mm <sup>2</sup>
Short-time current	NAP kA
Rated surge voltage	8 kV
Degree of pollution	3

## Product Accessories

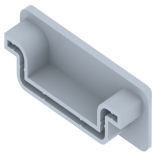
### DIN Rail Perforated

CHKDS	Height : 15.00 mm Width : 35.00 mm Thickness : 1.50 mm	
CHKS	Height : 7.50 mm Width : 35.00 mm Thickness : 1.00 mm	
CHS	Height : 15.00 mm Width : 32.00 mm Thickness : 1.50 mm	

### DIN Rail, Unperforated

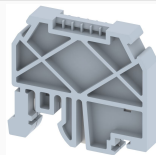
CHKD	Height : 15.00 mm Width : 35.00 mm Thickness : 1.50 mm	
CHK	Height : 7.50 mm Width : 35.00 mm Thickness : 1.00 mm	

### End Cap

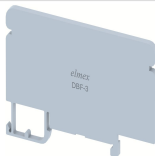
CHKENDCAP	Height : 14.00 mm Width : 9.00 mm Length : 41.50 mm	
-----------	---	---

### End Clamp

SCUP	Height : 34.00 mm Length : 44.75 mm	
------	--	---

End Clamp		
SCUSL	Height : 41.10 mm Width : 8.00 mm Length : 47.50 mm	
SCUDD	Height : 50.00 mm Width : 10.00 mm Length : 55.60 mm	
DCKN	Height : 33.00 mm Width : 6.00 mm Length : 43.50 mm	
DCKN10	Height : 35.00 mm Width : 10.00 mm Length : 43.50 mm	
SCKN	Height : 34.50 mm Width : 8.00 mm Length : 44.90 mm	
SCUN	Height : 35.50 mm Width : 9.50 mm Length : 50.60 mm	
Insertion Bridge		
UFSL-10W	Height : 79.50 mm Pitch : 8.20 mm Length : 22.50 mm	
UFSL-3W	Width : 22.10 mm Pitch : 8.20 mm Length : 22.50 mm	
UFSL-4W	Width : 30.30 mm Pitch : 8.20 mm Length : 22.50 mm	
UFSL-5W	Width : 38.50 mm Pitch : 8.20 mm Length : 22.50 mm	
UFSL-2W	Width : 13.00 mm Pitch : 8.20 mm Length : 22.50 mm	

Marker For Terminal Blocks		
LABEL KN5.5	Width : 6.00 mm	
LABEL KN8	Width : 8.00 mm	

Partition Plate		
DBF-3	Height : 38.40 mm Width : 3.00 mm Length : 78.00 mm	

Marker carriers		
SCUDDMLH	Height : 71.50 mm Width : 10.00 mm Length : 55.60 mm	
SCUNMLH	Height : 53.50 mm Width : 9.50 mm Length : 50.60 mm	
DCKNMLH	Height : 45.50 mm Width : 6.00 mm Length : 43.50 mm	
SCKNMLH	Height : 45.50 mm Width : 8.00 mm Length : 44.90 mm	