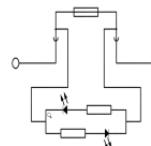
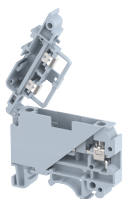


KUDF4AD48V

Terminal Type - KUDF4AD48V, Fuse terminal block with LED for 48 VAC/VDC, nominal voltage: 48 V, nominal current: 6.3 A, Rated cross-section - 4 mm², suitable size of cartridge fuse: 5X20 mm and 5x25 mm, connection method: Screw connection, number of connections: 2, cross-section: 0.5 mm² - 4 mm², mounting type: TS 35/7.5, TS 35/15, TS 32



Approvals

CE

General Information

Product Name	KUDF4AD48V
Connection Method	Screw Connection
Rating	48 V/6.3 A/4 mm ² /0.4 Nm
HSN Number	85389000
Standard Packing Qty(in No)	100
Country Of Origin	India
Screw thread	M3

Dimensions & Weight

Width	8 mm	0.31 inch
Length	54.5 mm	2.15 inch
Height	47.8 mm	1.88 inch
Weight of std. Packing Unit	1.39 Kg	

Material Data

Insulating Material	Polyamide 6,6
Standard Colour	Gray
Colour Variants	Red , Yellow , Blue , Black , Green , Khakhi ,

Rated Conductor Size

Conductor cross section flexible min	0.5 mm ²
Conductor cross section flexible max	4 mm ²
Conductor cross section solid min	0.5 mm ²
Conductor cross section solid max	4 mm ²

Ratings - IEC



Connection in acc. with standard	IEC-60947-7-3
Nominal Voltage U_n	48 V
Nominal Current I_n	6.3 A
Nominal cross section	4 mm ²
Short-time current	NAP kA
Rated surge voltage	8 kV
Degree of pollution	3

Product Accessories

DIN Rail Perforated

CHKDS	Height : 15.00 mm Width : 35.00 mm Thickness : 1.50 mm	
CHKS	Height : 7.50 mm Width : 35.00 mm Thickness : 1.00 mm	
CHS	Height : 15.00 mm Width : 32.00 mm Thickness : 1.50 mm	

DIN Rail, Unperforated

CHKD	Height : 15.00 mm Width : 35.00 mm Thickness : 1.50 mm	
CHK	Height : 7.50 mm Width : 35.00 mm Thickness : 1.00 mm	

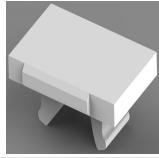
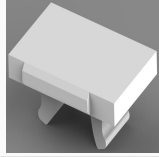
End Cap

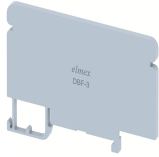
CHKENDCAP	Height : 14.00 mm Width : 9.00 mm Length : 41.50 mm	
-----------	---	---

End Clamp

SCUP	Height : 34.00 mm Length : 44.75 mm	
------	--	---

End Clamp		
SCUSL	Height : 41.10 mm Width : 8.00 mm Length : 47.50 mm	
SCUDD	Height : 50.00 mm Width : 10.00 mm Length : 55.60 mm	
DCKN	Height : 33.00 mm Width : 6.00 mm Length : 43.50 mm	
DCKN10	Height : 35.00 mm Width : 10.00 mm Length : 43.50 mm	
SCKN	Height : 34.50 mm Width : 8.00 mm Length : 44.90 mm	
SCUN	Height : 35.50 mm Width : 9.50 mm Length : 50.60 mm	
Insertion Bridge		
UFSL-10W	Height : 79.50 mm Pitch : 8.20 mm Length : 22.50 mm	
UFSL-3W	Width : 22.10 mm Pitch : 8.20 mm Length : 22.50 mm	
UFSL-4W	Width : 30.30 mm Pitch : 8.20 mm Length : 22.50 mm	
UFSL-5W	Width : 38.50 mm Pitch : 8.20 mm Length : 22.50 mm	
UFSL-2W	Width : 13.00 mm Pitch : 8.20 mm Length : 22.50 mm	

Marker For Terminal Blocks		
LABEL KN5.5	Width : 6.00 mm	
LABEL KN8	Width : 8.00 mm	

Partition Plate		
DBF-3	Height : 38.40 mm Width : 3.00 mm Length : 78.00 mm	

Marker carriers		
SCUDDMLH	Height : 71.50 mm Width : 10.00 mm Length : 55.60 mm	
SCUNMLH	Height : 53.50 mm Width : 9.50 mm Length : 50.60 mm	
DCKNMLH	Height : 45.50 mm Width : 6.00 mm Length : 43.50 mm	
SCKNMLH	Height : 45.50 mm Width : 8.00 mm Length : 44.90 mm	