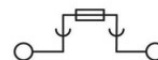
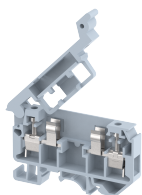


KUFH4

Terminal Type - KUFH4, Fuse terminal block, nominal voltage: 800 V, nominal current: 12 A, Rated cross-section – 4 mm², suitable size of cartridge fuse: 6.35X32 mm, connection method: Screw connection, number of connections: 2, cross-section: 0.5 mm² - 6 mm², AWG: 24 -10, mounting type: TS 35/7.5, TS 35/15, TS 32



Approvals



General Information

Product Name	KUFH4
Connection Method	Screw Connection
Rating	800 V/12 A/4 mm ² /0.5 Nm
HSN Number	85389000
Standard Packing Qty(in No)	100
Country Of Origin	India
Screw thread	M3

Dimensions & Weight

Width	9 mm	0.35 inch
Length	76.5 mm	3.01 inch
Height	53.5 mm	2.11 inch
Weight of std. Packing Unit	2.47 Kg	

Material Data

Insulating Material	Polyamide 6,6
Standard Colour	Gray
Colour Variants	Red , Yellow , Blue , Black , Green , Khakhi ,

Rated Conductor Size

Conductor cross section flexible min	0.5 mm ²
Conductor cross section flexible max	4 mm ²
Conductor cross section solid min	0.5 mm ²
Conductor cross section solid max	6 mm ²

Ratings - IEC

Connection in acc. with standard	IEC 60947-7-1
Nominal Voltage U_n	800 V
Nominal Current I_n	12 A
Nominal cross section	4 mm ²
Short-time current	NAP kA
Rated surge voltage	8 kV
Degree of pollution	3

Ratings - ATEX

ATEX Standard	EN-60079-7
ATEX Nominal Voltage U_n	750 V
ATEX Nominal Current I_n	5 A
ATEX Cross Sec. Flexible Max.	4 mm ²

Ratings - CSA

CSA Standard	CSA C22.2 NO 158
B - CSA Nominal Voltage U_n	600 V
B - CSA Nominal Current I_n	12 A
B - CSA Wire Min	24 AWG
B - CSA Wire Max	10 AWG


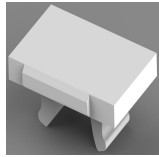

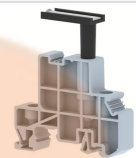
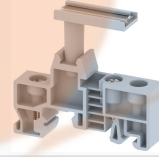
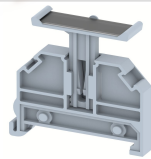
Ratings - UL

UL Standard	UL 1059
B - UL Nominal Voltage U_n	600 V
B - UL Nominal Current I_n	12 A
B - UL Wire Min	24 AWG
B - UL Wire Max	10 AWG

Product Accessories

DIN Rail Perforated		
CHKDS	Height : 15.00 mm Width : 35.00 mm Thickness : 1.50 mm	
CHKS	Height : 7.50 mm Width : 35.00 mm Thickness : 1.00 mm	
CHS	Height : 15.00 mm Width : 32.00 mm Thickness : 1.50 mm	

DIN Rail, Unperforated		
CHKD	Height : 15.00 mm Width : 35.00 mm Thickness : 1.50 mm	
CHK	Height : 7.50 mm Width : 35.00 mm Thickness : 1.00 mm	
End Cap		
CHKENDCAP	Height : 14.00 mm Width : 9.00 mm Length : 41.50 mm	
End Clamp		
SCUP	Height : 34.00 mm Length : 44.75 mm	
SCUSL	Height : 41.10 mm Width : 8.00 mm Length : 47.50 mm	
SCUDD	Height : 50.00 mm Width : 10.00 mm Length : 55.60 mm	
DCKN	Height : 33.00 mm Width : 6.00 mm Length : 43.50 mm	
DCKN10	Height : 35.00 mm Width : 10.00 mm Length : 43.50 mm	
SCKN	Height : 34.50 mm Width : 8.00 mm Length : 44.90 mm	
SCUN	Height : 35.50 mm Width : 9.50 mm Length : 50.60 mm	

End Cover		
EPFH	Height : 41.90 mm Width : 1.50 mm Length : 71.25 mm	
Marker For Terminal Blocks		
LABEL KN 9	Width : 9.00 mm	
Partition Plate		
KBZF	Height : 65.00 mm Width : 1.50 mm Length : 65.00 mm	
Marker carriers		
SCUDDMLH	Height : 71.50 mm Width : 10.00 mm Length : 55.60 mm	
SCUNMLH	Height : 53.50 mm Width : 9.50 mm Length : 50.60 mm	
DCKNMLH	Height : 45.50 mm Width : 6.00 mm Length : 43.50 mm	
SCKNMLH	Height : 45.50 mm Width : 8.00 mm Length : 44.90 mm	