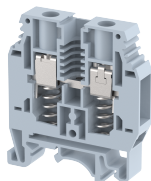


KULT1

Terminal Type - KULT1 , Spring loaded terminal block, nominal voltage: 1000 V, nominal current: 57 A, Rated cross-section - 10 mm² , connection method: Screw connection with spring support, number of connections: 2, cross-section: 1.5 mm² - 16 mm², AWG: 16- 6 , mounting type: TS 35/7.5, TS 35/15 , TS 32 , colour: GREY



Approvals



General Information

Product Name	KULT1
Connection Method	Screw Connection with spring support
Rating	1000 V/57 A/10 mm ² /1.2 Nm
HSN Number	85389000
Standard Packing Qty(in No)	100
Country Of Origin	India
Screw thread	M4

Dimensions & Weight

Width	10 mm	0.39 inch
Length	52 mm	2.05 inch
Height	58.5 mm	2.3 inch
Weight of std. Packing Unit	2.7 Kg	

Material Data

Insulating Material	Polyamide 6,6
Standard Colour	Gray
Colour Variants	Red , Yellow , Blue , Black , Green , Khakhi ,

Rated Conductor Size

Conductor cross section flexible min	1.5 mm ²
Conductor cross section flexible max	10 mm ²
Conductor cross section solid min	1.5 mm ²
Conductor cross section solid max	16 mm ²

Ratings - IEC

Connection in acc. with standard	IEC 60947-7-1
Nominal Voltage U _n	1000 V
Nominal Current I _n	57 A
Nominal cross section	10 mm ²
Short-time current	1.2 kA
Rated surge voltage	8 kV
Degree of pollution	3

Ratings - ATEX

ATEX Standard	EN 60079-7
ATEX Nominal Voltage U _n	1000 V
ATEX Nominal Current I _n	57 A
ATEX Cross Sec. Flexible Max.	10 mm ²


Ratings - CSA

CSA Standard	CSA C22.2 NO 158
B - CSA Nominal Voltage U _N	600 V
B - CSA Nominal Current I _N	65 A
B - CSA Wire Min	16 AWG
B - CSA Wire Max	6 AWG

Ratings - UL

UL Standard	UL 1059
B - UL Nominal Voltage U _N	600 V
B - UL Nominal Current I _N	65 A
B - UL Wire Min	16 AWG
B - UL Wire Max	6 AWG

Product Accessories

Cover Profile		
PCK3	Height : 28.00 mm Width : 58.35 mm Thickness : 1.00 mm	
Cover Profile Carrier		
UHDD	Height : 74.50 mm Thickness : 2.00 mm Length : 55.82 mm	

DIN Rail Perforated		
CHKDS	Height : 15.00 mm Width : 35.00 mm Thickness : 1.50 mm	
CHKS	Height : 7.50 mm Width : 35.00 mm Thickness : 1.00 mm	
CHS	Height : 15.00 mm Width : 32.00 mm Thickness : 1.50 mm	
DIN Rail, Unperforated		
CHKD	Height : 15.00 mm Width : 35.00 mm Thickness : 1.50 mm	
CHK	Height : 7.50 mm Width : 35.00 mm Thickness : 1.00 mm	
End Cap		
CHKENDCAP	Height : 14.00 mm Width : 9.00 mm Length : 41.50 mm	
End Clamp		
SCUP	Height : 34.00 mm Length : 44.75 mm	
SCUSL	Height : 41.10 mm Width : 8.00 mm Length : 47.50 mm	
SCUDD	Height : 50.00 mm Width : 10.00 mm Length : 55.60 mm	
DCKN	Height : 33.00 mm Width : 6.00 mm Length : 43.50 mm	

End Clamp		
DCKN10	Height : 35.00 mm Width : 10.00 mm Length : 43.50 mm	
SCKN	Height : 34.50 mm Width : 8.00 mm Length : 44.90 mm	
SCUN	Height : 35.50 mm Width : 9.50 mm Length : 50.60 mm	
End Cover		
KPSL	Height : 46.60 mm Width : 2.50 mm Length : 52.00 mm	
Fixed Bridge		
CCLA1LK-2W	Height : 24.00 mm Pitch : 10.05 mm Length : 17.30 mm	
CCLA1LK-10W	Height : 24.00 mm Pitch : 10.05 mm Length : 97.50 mm	
CCLA1LK-3W	Height : 24.00 mm Pitch : 10.05 mm Length : 27.30 mm	
CCLA1LK-4W	Height : 24.00 mm Pitch : 10.05 mm Length : 37.30 mm	
CCLA1LK-5W	Height : 24.00 mm Pitch : 10.05 mm Length : 47.30 mm	
Marker For Terminal Blocks		
LABEL KN10	Width : 10.00 mm	

Partition Plate		
KBZF	Height : 65.00 mm Width : 1.50 mm Length : 65.00 mm	
Switching Jumper		
LSR1L	Height : 30.00 mm Width : 6.00 mm	
RSL1L	Width : 7.00 mm Thickness : 1.60 mm Length : 18.00 mm	
Marker carriers		
SCUDDMLH	Height : 71.50 mm Width : 10.00 mm Length : 55.60 mm	
SCUNMLH	Height : 53.50 mm Width : 9.50 mm Length : 50.60 mm	
DCKNMLH	Height : 45.50 mm Width : 6.00 mm Length : 43.50 mm	
SCKNMLH	Height : 45.50 mm Width : 8.00 mm Length : 44.90 mm	