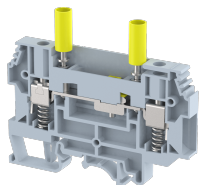


KULTD6

Terminal Type - KULTD6, Test Disconnect Terminal Block, nominal voltage: 1000 V, nominal current: 41 A, Rated cross-section- 6 mm² , connection method: Screw connection with spring support, number of connections: 2, cross-section: 0.5 mm² - 10 mm² , AWG: 24-8,mounting type: TS35/7.5, TS35/15 and TS32



Approvals



General Information

Product Name	KULTD6
Connection Method	Screw Connection with spring support
Rating	1000 V/41 A/6 mm ² /1 Nm
HSN Number	85389000
Standard Packing Qty(in No)	50
Country Of Origin	India
Screw thread	M3.5

Dimensions & Weight

Width	8 mm	0.31 inch
Length	85.5 mm	3.37 inch
Height	71 mm	2.8 inch
Weight of std. Packing Unit	2.05 Kg	

Material Data

Insulating Material	Polyamide 6,6
Standard Colour	Gray
Colour Variants	Red , Yellow , Blue , Black , Green , Khakhi ,

Rated Conductor Size

Conductor cross section flexible min	0.5 mm ²
Conductor cross section flexible max	6 mm ²
Conductor cross section solid min	0.5 mm ²
Conductor cross section solid max	10 mm ²

Ratings - IEC

Connection in acc. with standard	IEC 60947-7-1
Nominal Voltage U_n	1000 V
Nominal Current I_n	41 A
Nominal cross section	6 mm ²
Short-time current	0.72 kA
Rated surge voltage	8 kV
Degree of pollution	3

Ratings - ATEX

ATEX Standard	EN 60079-7
ATEX Nominal Voltage U_n	550 V
ATEX Nominal Current I_n	32 A
ATEX Cross Sec. Flexible Max.	6 mm ²

Ratings - CSA

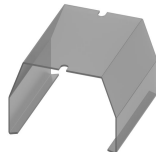
CSA Standard	CSA C22.2 No. 158
B - CSA Nominal Voltage U_N	600 V
B - CSA Nominal Current I_N	35 A
B - CSA Wire Min	24 AWG
B - CSA Wire Max	8 AWG

Ratings - UL

UL Standard	UL 1059
B - UL Nominal Voltage U_N	600 V
B - UL Nominal Current I_N	35 A
B - UL Wire Min	24 AWG
B - UL Wire Max	8 AWG

Product Accessories

Cover Profile

BPSCACP		
---------	--	---

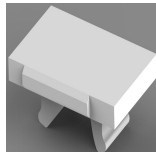
Cover Profile Carrier

BPSCA	Height : 89.30 mm Width : 10.00 mm Length : 90.00 mm	
-------	--	---

Cover Profile Carrier		
KBFA	Height : 74.40 mm Width : 4.80 mm Length : 90.00 mm	
DIN Rail Perforated		
CHKDS	Height : 15.00 mm Width : 35.00 mm Thickness : 1.50 mm	
CHKS	Height : 7.50 mm Width : 35.00 mm Thickness : 1.00 mm	
CHS	Height : 15.00 mm Width : 32.00 mm Thickness : 1.50 mm	
DIN Rail, Unperforated		
CHKD	Height : 15.00 mm Width : 35.00 mm Thickness : 1.50 mm	
CHK	Height : 7.50 mm Width : 35.00 mm Thickness : 1.00 mm	
End Cap		
CHKENDCAP	Height : 14.00 mm Width : 9.00 mm Length : 41.50 mm	
End Clamp		
SCUP	Height : 34.00 mm Length : 44.75 mm	
SCUSL	Height : 41.10 mm Width : 8.00 mm Length : 47.50 mm	
SCUDD	Height : 50.00 mm Width : 10.00 mm Length : 55.60 mm	

End Clamp		
DCKN	Height : 33.00 mm Width : 6.00 mm Length : 43.50 mm	
DCKN10	Height : 35.00 mm Width : 10.00 mm Length : 43.50 mm	
SCKN	Height : 34.50 mm Width : 8.00 mm Length : 44.90 mm	
SCUN	Height : 35.50 mm Width : 9.50 mm Length : 50.60 mm	
End Cover		
KPSLD	Height : 46.40 mm Width : 1.00 mm Length : 85.10 mm	
Fixed Bridge		
CCLAKG6-10W	Pitch : 8.00 mm Length : 80.45 mm	
CCLAKG6-2W	Pitch : 8.00 mm Length : 16.45 mm	
CCLAKG6-3W	Pitch : 8.00 mm Length : 24.45 mm	
CCLAKG6-4W	Pitch : 8.00 mm Length : 32.45 mm	
CCLAKG6-5W	Pitch : 8.00 mm Length : 40.45 mm	
CCLAKG6-6W	Pitch : 8.00 mm Length : 48.45 mm	

Insertion Bridge		
KUSLD6(2)AW	Width : 24.45 mm Length : 11.25 mm	
KUSLD6(2+1)AW	Width : 34.00 mm Length : 11.25 mm	
KUSLD6(3)AW	Width : 40.45 mm Length : 11.25 mm	
KUSLD6(3+1)AW	Width : 48.45 mm Length : 11.25 mm	
KUSLD6(4)AW	Width : 56.45 mm Length : 11.25 mm	
KUSLD6(4+1)AW	Width : 56.45 mm Length : 11.25 mm	
KSLD6-10W	Width : 79.00 mm Pitch : 8.00 mm Length : 34.00 mm	
KSLD6-2W	Width : 15.00 mm Pitch : 8.00 mm Length : 34.00 mm	
KSLD6-3W	Width : 23.00 mm Pitch : 8.00 mm Length : 34.00 mm	

Marker For Terminal Blocks		
LABEL KN8	Width : 8.00 mm	

Plug-in Bridge/Jumper		
BPSL6-2W	Height : 30.00 mm Width : 14.50 mm Pitch : 8.00 mm	

Switching Jumper		
SLD6-10W	Height : 13.60 mm Pitch : 8.00 mm Length : 78.60 mm	
SLD6-2W	Height : 13.60 mm Pitch : 8.00 mm Length : 14.60 mm	
SLD6-3W	Height : 13.60 mm Pitch : 8.00 mm Length : 22.60 mm	
SLD6-4W	Height : 13.60 mm Pitch : 8.00 mm Length : 30.60 mm	
SLD6-5W	Height : 13.60 mm Pitch : 8.00 mm Length : 38.60 mm	
SLD6-6W	Height : 13.60 mm Pitch : 8.00 mm Length : 46.40 mm	
Marker carriers		
SCUDDMLH	Height : 71.50 mm Width : 10.00 mm Length : 55.60 mm	
SCUNMLH	Height : 53.50 mm Width : 9.50 mm Length : 50.60 mm	
SCKNMLH	Height : 45.50 mm Width : 8.00 mm Length : 44.90 mm	