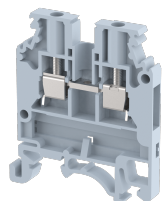


## **KUT2.5N**

Terminal Type - KUT2.5N , Feed-through terminal block for photo voltaic applications, nominal voltage: 1000 V, nominal current: 24 A, connection method: Screw connection, number of connections: 2, cross section: 0.5 mm<sup>2</sup> - 4 mm<sup>2</sup>, AWG: 20 - 12, mounting type: TS 35/7.5, TS 35/15 , TS 32



### Approvals



### General Information

Product Name	KUT2.5N
Connection Method	Screw Connection
Rating	1000 V/24 A/2.5 mm <sup>2</sup> /0.4 Nm
HSN Number	85389000
Standard Packing Qty(in No)	100
Country Of Origin	India
Screw thread	M2.6

### Dimensions & Weight

Width	5 mm	0.2 inch
Length	44.25 mm	1.74 inch
Height	50.8 mm	2 inch
Weight of std. Packing Unit	0.88 Kg	

### Material Data

Insulating Material	Polyamide 6,6
Standard Colour	Gray
Colour Variants	Red , Yellow , Blue , Black , Green , Khakhi ,

### Rated Conductor Size

Conductor cross section flexible min	0.5 mm <sup>2</sup>
Conductor cross section flexible max	2.5 mm <sup>2</sup>
Conductor cross section solid min	0.5 mm <sup>2</sup>
Conductor cross section solid max	4 mm <sup>2</sup>

### Ratings - IEC

Connection in acc. with standard	IEC 60947-7-1
Nominal Voltage $U_n$	1000 V
Nominal Current $I_n$	24 A
Nominal cross section	2.5 mm <sup>2</sup>
Short-time current	0.3 kA
Rated surge voltage	8 kV
Degree of pollution	3

### Ratings - ATEX

ATEX Standard	EN 60079-7
ATEX Nominal Voltage $U_n$	800 V
ATEX Nominal Current $I_n$	20 A
ATEX Cross Sec. Flexible Max.	2.5 mm <sup>2</sup>

### Ratings - CSA

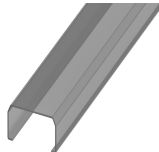
CSA Standard	
B - CSA Nominal Voltage $U_N$	0 V
B - CSA Nominal Current $I_N$	0 A
B - CSA Wire Min	0 AWG
B - CSA Wire Max	0 AWG

### Ratings - UL

UL Standard	UL 1059
B - UL Nominal Voltage $U_N$	600 V
B - UL Nominal Current $I_N$	20 A
B - UL Wire Min	20 AWG
B - UL Wire Max	12 AWG

### Product Accessories

#### Cover Profile

PCK3	Height : 28.00 mm Width : 58.35 mm Thickness : 1.00 mm	
------	--	---

#### Cover Profile Carrier

UHDD	Height : 74.50 mm Thickness : 2.00 mm Length : 55.82 mm	
------	---	---

<b>DIN Rail Perforated</b>		
CHKDS	Height : 15.00 mm Width : 35.00 mm Thickness : 1.50 mm	
CHKS	Height : 7.50 mm Width : 35.00 mm Thickness : 1.00 mm	
CHS	Height : 15.00 mm Width : 32.00 mm Thickness : 1.50 mm	
<b>DIN Rail, Unperforated</b>		
CHKD	Height : 15.00 mm Width : 35.00 mm Thickness : 1.50 mm	
CHK	Height : 7.50 mm Width : 35.00 mm Thickness : 1.00 mm	
<b>End Cap</b>		
CHKENDCAP	Height : 14.00 mm Width : 9.00 mm Length : 41.50 mm	
<b>End Clamp</b>		
SCUP	Height : 34.00 mm Length : 44.75 mm	
SCUSL	Height : 41.10 mm Width : 8.00 mm Length : 47.50 mm	
SCUDD	Height : 50.00 mm Width : 10.00 mm Length : 55.60 mm	
DCKN	Height : 33.00 mm Width : 6.00 mm Length : 43.50 mm	

<b>End Clamp</b>		
DCKN10	Height : 35.00 mm Width : 10.00 mm Length : 43.50 mm	
SCKN	Height : 34.50 mm Width : 8.00 mm Length : 44.90 mm	
SCUN	Height : 35.50 mm Width : 9.50 mm Length : 50.60 mm	
<b>End Cover</b>		
KPXN	Height : 41.50 mm Width : 1.50 mm Length : 41.50 mm	
<b>Fixed Bridge</b>		
CCLM2.5N-2W	Height : 16.00 mm Pitch : 5.00 mm Length : 9.40 mm	
CCLM2.5N-10W	Height : 16.00 mm Pitch : 5.00 mm Length : 49.40 mm	
CCLM2.5N-3W	Height : 16.00 mm Pitch : 5.00 mm Length : 14.40 mm	
CCLM2.5N-4W	Height : 16.00 mm Pitch : 5.00 mm Length : 19.40 mm	
CCLM2.5N-5W	Height : 16.00 mm Pitch : 5.00 mm Length : 24.40 mm	
<b>Insertion Bridge</b>		
SLC2.5N-2W	Width : 9.60 mm Pitch : 5.00 mm Length : 23.00 mm	

Insertion Bridge		
SLC2.5N-10W	Width : 49.20 mm Pitch : 5.00 mm Length : 23.00 mm	
SLC2.5N-3W	Width : 14.60 mm Pitch : 5.00 mm Length : 23.00 mm	
SLC2.5N-4W	Width : 19.60 mm Pitch : 5.00 mm Length : 23.00 mm	
SLC2.5N-5W	Width : 24.60 mm Pitch : 5.00 mm Length : 23.00 mm	
Marker For Terminal Blocks		
LABEL KN5	Width : 5.00 mm	
Partition Plate		
KNBF 2.5/10	Height : 58.00 mm Width : 1.50 mm Length : 55.50 mm	
Spacer Plate		
SBN1	Height : 12.10 mm Width : 1.37 mm Length : 13.20 mm	
Switching Jumper		
LSR2.5N		
RSL2.5N		
Warning Label		
WL2.5N	Height : 24.00 mm Thickness : 1.10 mm Length : 24.00 mm	

Marker carriers		
SCUDDMLH	Height : 71.50 mm Width : 10.00 mm Length : 55.60 mm	
SCUNMLH	Height : 53.50 mm Width : 9.50 mm Length : 50.60 mm	
DCKNMLH	Height : 45.50 mm Width : 6.00 mm Length : 43.50 mm	
SCKNMLH	Height : 45.50 mm Width : 8.00 mm Length : 44.90 mm	

