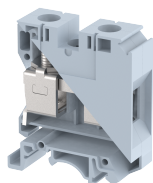


KUT35

Terminal Type - KUT35 , Feed-through terminal block, nominal voltage: 1000 V, nominal current: 125 A, connection method: Screw connection, number of connections: 2, Rated cross section: 35 mm², cross section: 10 mm² - 35 mm², AWG: 1-14, mounting type: TS35/7.5 , TS35/15 , and TS32



Approvals



General Information

Product Name	KUT35
Connection Method	Screw Connection
Rating	1000 V/125 A/35 mm ² /3 Nm
HSN Number	85389000
Standard Packing Qty(in No)	50
Country Of Origin	India
Screw thread	M6

Dimensions & Weight

Width	17 mm	0.67 inch
Length	51 mm	2.01 inch
Height	58 mm	2.28 inch
Weight of std. Packing Unit	2.9 Kg	

Material Data

Insulating Material	Polyamide 6,6
Standard Colour	Gray
Colour Variants	Red , Yellow , Blue , Black , Green , Khakhi ,

Rated Conductor Size

Conductor cross section flexible min	10 mm ²
Conductor cross section flexible max	35 mm ²
Conductor cross section solid min	10 mm ²
Conductor cross section solid max	35 mm ²

Ratings - IEC

Connection in acc. with standard	IEC-60947-7-1
Nominal Voltage U_n	1000 V
Nominal Current I_n	125 A
Nominal cross section	35 mm ²
Short-time current	4.2 kA
Rated surge voltage	8 kV
Degree of pollution	3

Ratings - ATEX

ATEX Standard	EN-60079-7
ATEX Nominal Voltage U_n	630 V
ATEX Nominal Current I_n	125 A
ATEX Cross Sec. Flexible Max.	35 mm ²


Ratings - CSA

CSA Standard	CSA C22.2 NO 158
B - CSA Nominal Voltage U_n	600 V
B - CSA Nominal Current I_n	140 A
B - CSA Wire Min	14 AWG
B - CSA Wire Max	1 AWG

Ratings - UL

UL Standard	UL 1059
B - UL Nominal Voltage U_n	600 V
B - UL Nominal Current I_n	140 A
B - UL Wire Min	14 AWG
B - UL Wire Max	1 AWG

Product Accessories

Cover Profile		
PCK3	Height : 28.00 mm Width : 58.35 mm Thickness : 1.00 mm	
Cover Profile Carrier		
UHDD	Height : 74.50 mm Thickness : 2.00 mm Length : 55.82 mm	



DIN Rail Perforated		
CHKDS	Height : 15.00 mm Width : 35.00 mm Thickness : 1.50 mm	
CHKS	Height : 7.50 mm Width : 35.00 mm Thickness : 1.00 mm	
CHS	Height : 15.00 mm Width : 32.00 mm Thickness : 1.50 mm	
DIN Rail, Unperforated		
CHKD	Height : 15.00 mm Width : 35.00 mm Thickness : 1.50 mm	
CHK	Height : 7.50 mm Width : 35.00 mm Thickness : 1.00 mm	
End Cap		
CHKENDCAP	Height : 14.00 mm Width : 9.00 mm Length : 41.50 mm	
End Clamp		
SCUP	Height : 34.00 mm Length : 44.75 mm	
SCUSL	Height : 41.10 mm Width : 8.00 mm Length : 47.50 mm	
SCUDD	Height : 50.00 mm Width : 10.00 mm Length : 55.60 mm	
DCKN	Height : 33.00 mm Width : 6.00 mm Length : 43.50 mm	

End Clamp		
DCKN10	Height : 35.00 mm Width : 10.00 mm Length : 43.50 mm	
SCKN	Height : 34.50 mm Width : 8.00 mm Length : 44.90 mm	
SCUN	Height : 35.50 mm Width : 9.50 mm Length : 50.60 mm	

Fixed Bridge		
CCLA35K-2W	Height : 27.00 mm Pitch : 17.00 mm Length : 25.50 mm	
CCLA35K-10W	Height : 27.00 mm Pitch : 17.00 mm Length : 165.00 mm	
CCLA35K-3W	Height : 27.00 mm Pitch : 17.00 mm Length : 42.50 mm	
CCLA35K-4W	Height : 27.00 mm Pitch : 17.00 mm Length : 60.00 mm	
CCLA35K-5W	Height : 27.00 mm Pitch : 17.00 mm Length : 77.50 mm	

Marker For Terminal Blocks		
LABEL KN17	Width : 17.00 mm	

Partition Plate		
KBZF	Height : 65.00 mm Width : 1.50 mm Length : 65.00 mm	

Switching Jumper		
LSR35K	Height : 29.50 mm Width : 6.50 mm	
RSL35K	Thickness : 1.60 mm Pitch : 17.00 mm Length : 26.70 mm	

Warning Label		
WL35	Width : 35.00 mm Thickness : 1.50 mm Length : 74.00 mm	

Marker carriers		
SCUDDMLH	Height : 71.50 mm Width : 10.00 mm Length : 55.60 mm	
SCUNMLH	Height : 53.50 mm Width : 9.50 mm Length : 50.60 mm	
DCKNMLH	Height : 45.50 mm Width : 6.00 mm Length : 43.50 mm	
SCKNMLH	Height : 45.50 mm Width : 8.00 mm Length : 44.90 mm	