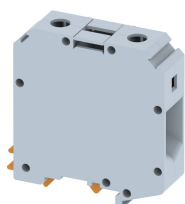


KUT50

Terminal Type - KUT50 , Feed-through terminal block, nominal voltage: 1000 V, nominal current: 150 A, connection method: Screw connection, number of connections: 2, Rated cross section: 50 mm², AWG: 6 - 2/0 , mounting type: TS35/7.5 , TS35/15 , and TS32



Approvals



General Information

Product Name	KUT50
Connection Method	Screw Connection
Rating	1000 V/150 A/50 mm ² /3 Nm
HSN Number	85389000
Standard Packing Qty(in No)	10
Country Of Origin	India
Screw thread	M6

Dimensions & Weight

Width	20.5 mm	0.81 inch
Length	71 mm	2.8 inch
Height	75.5 mm	2.97 inch
Weight of std. Packing Unit	1.24 Kg	

Material Data

Insulating Material	Polyamide 6,6
Standard Colour	Gray
Colour Variants	Red , Yellow , Blue , Black , Green , Khakhi ,

Rated Conductor Size

Conductor cross section flexible min	16 mm ²
Conductor cross section flexible max	50 mm ²
Conductor cross section solid min	16 mm ²
Conductor cross section solid max	70 mm ²

Ratings - IEC

Connection in acc. with standard	IEC 60947-7-1
Nominal Voltage U_n	1000 V
Nominal Current I_n	150 A
Nominal cross section	50 mm ²
Short-time current	6 kA
Rated surge voltage	12 kV
Degree of pollution	3

Ratings - ATEX

ATEX Standard	EN-60079-7
ATEX Nominal Voltage U_n	1000 V
ATEX Nominal Current I_n	150 A
ATEX Cross Sec. Flexible Max.	50 mm ²

Ratings - CSA

CSA Standard	CSA C22.2 NO 158
B - CSA Nominal Voltage U_N	600 V
B - CSA Nominal Current I_N	150 A
B - CSA Wire Min	6 AWG
B - CSA Wire Max	2/0 AWG

Ratings - UL

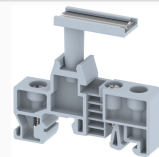
UL Standard	UL 1059
B - UL Nominal Voltage U_N	600 V
B - UL Nominal Current I_N	150 A
B - UL Wire Min	6 AWG
B - UL Wire Max	2/0 AWG

Product Accessories

DIN Rail Perforated

CHKDS	Height : 15.00 mm Width : 35.00 mm Thickness : 1.50 mm	
CHKS	Height : 7.50 mm Width : 35.00 mm Thickness : 1.00 mm	
CHS	Height : 15.00 mm Width : 32.00 mm Thickness : 1.50 mm	

DIN Rail, Unperforated		
CHKD	Height : 15.00 mm Width : 35.00 mm Thickness : 1.50 mm	
CHK	Height : 7.50 mm Width : 35.00 mm Thickness : 1.00 mm	
End Cap		
CHKENDCAP	Height : 14.00 mm Width : 9.00 mm Length : 41.50 mm	
End Clamp		
SCUDD	Height : 50.00 mm Width : 10.00 mm Length : 55.60 mm	
SCUSL	Height : 41.10 mm Width : 8.00 mm Length : 47.50 mm	
SCUN	Height : 35.50 mm Width : 9.50 mm Length : 50.60 mm	
Fixed Bridge		
CCLA50-2W	Height : 25.00 mm Pitch : 20.50 mm Length : 37.00 mm	
CCLA50-3W	Height : 25.00 mm Pitch : 20.50 mm Length : 57.50 mm	
CCLA50-5W	Height : 25.00 mm Pitch : 20.50 mm Length : 98.50 mm	
Marker For Terminal Blocks		
LABEL KN17	Width : 17.00 mm	

Marker carriers		
SCUDDMLH	Height : 71.50 mm Width : 10.00 mm Length : 55.60 mm	
SCUNMLH	Height : 53.50 mm Width : 9.50 mm Length : 50.60 mm	
Tap Terminal		
KTT6	Height : 31.00 mm Width : 28.00 mm	

