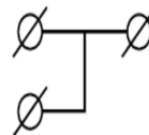
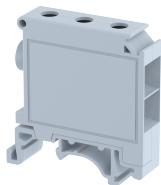


LPT225

Terminal Type - LPT225 , Feed-through terminal block, nominal voltage: 400 V, nominal current: 101 A, connection method: Screw connection, Operated by - 3 mm Allen key, number of connections: 3, cross section: 4 mm² - 25 mm², mounting type: TS 35/7.5, TS 35/15 , TS 32



Approvals

CE

General Information

Product Name	LPT225
Connection Method	Screw Connection
Rating	400 V/101 A/25 mm ² /2.5 Nm
HSN Number	85389000
Standard Packing Qty(in No)	10
Country Of Origin	India
Screw thread	NAV

Dimensions & Weight

Width	10.8 mm	0.43 inch
Length	42 mm	1.65 inch
Height	43.6 mm	1.72 inch
Weight of std. Packing Unit	0.38 Kg	

Material Data

Insulating Material	Polyamide 6,6
Standard Colour	Gray
Colour Variants	

Rated Conductor Size

Conductor cross section flexible min	4 mm ²
Conductor cross section flexible max	25 mm ²
Conductor cross section solid min	4 mm ²
Conductor cross section solid max	25 mm ²

Ratings - IEC

Connection in acc. with standard	IEC 60947-7-1
Nominal Voltage U_n	400 V
Nominal Current I_n	101 A
Nominal cross section	25 mm ²
Short-time current	3 kA
Rated surge voltage	4 kV
Degree of pollution	3

Product Accessories

Cover Profile

PCK3	Height : 28.00 mm Width : 58.35 mm Thickness : 1.00 mm	
------	--	---

Cover Profile Carrier

UHDD	Height : 74.50 mm Thickness : 2.00 mm Length : 55.82 mm	
------	---	--

DIN Rail Perforated

CHKDS	Height : 15.00 mm Width : 35.00 mm Thickness : 1.50 mm	
CHKS	Height : 7.50 mm Width : 35.00 mm Thickness : 1.00 mm	
CHS	Height : 15.00 mm Width : 32.00 mm Thickness : 1.50 mm	

DIN Rail, Unperforated

CHKD	Height : 15.00 mm Width : 35.00 mm Thickness : 1.50 mm	
CHK	Height : 7.50 mm Width : 35.00 mm Thickness : 1.00 mm	

Marker For Terminal Blocks

LABEL KN10	Width : 10.00 mm	
------------	------------------	---

