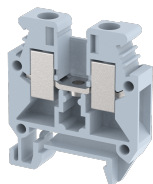


## MBT4

Terminal Type - MBT 4 , Mini and Micro Feed-through terminal block, nominal voltage: 630 V, nominal current: 30 A, Rated cross-section: 2.5 mm<sup>2</sup>, connection method: Screw connection, number of connections: 2, cross-section: 0.2 mm<sup>2</sup> - 4 mm<sup>2</sup>, mounting type: TS 15



### Approvals



### General Information

Product Name	MBT4
Connection Method	Screw Connection
Rating	630 V/30 A/2.5 mm <sup>2</sup> /0.5 Nm
HSN Number	85389000
Standard Packing Qty(in No)	100
Country Of Origin	India
Screw thread	M3

### Dimensions & Weight

Width	6.1 mm	0.24 inch
Length	28 mm	1.1 inch
Height	31.25 mm	1.23 inch
Weight of std. Packing Unit	0.63 Kg	

### Material Data

Insulating Material	Polyamide 6,6
Standard Colour	Gray
Colour Variants	Red , Yellow , Blue , Black , Green , Khakhi ,

### Rated Conductor Size

Conductor cross section flexible min	0.2 mm <sup>2</sup>
Conductor cross section flexible max	2.5 mm <sup>2</sup>
Conductor cross section solid min	0.2 mm <sup>2</sup>
Conductor cross section solid max	4 mm <sup>2</sup>

**Ratings - IEC**

Connection in acc. with standard	IEC 60947-7-1
Nominal Voltage $U_n$	630 V
Nominal Current $I_n$	30 A
Nominal cross section	2.5 mm <sup>2</sup>
Short-time current	0.3 kA
Rated surge voltage	6 kV
Degree of pollution	3

**Ratings - ATEX**

ATEX Standard	EN 60079-7
ATEX Nominal Voltage $U_n$	400 V
ATEX Nominal Current $I_n$	24 A
ATEX Cross Sec. Flexible Max.	2.5 mm <sup>2</sup>

**Ratings - CSA**

CSA Standard	CSA C22.2 NO 158
B - CSA Nominal Voltage $U_n$	300 V
B - CSA Nominal Current $I_n$	35 A
B - CSA Wire Min	24 AWG
B - CSA Wire Max	10 AWG

**Ratings - UL**

UL Standard	UL 1059
B - UL Nominal Voltage $U_n$	300 V
B - UL Nominal Current $I_n$	35 A
B - UL Wire Min	24 AWG
B - UL Wire Max	10 AWG

**Product Accessories**

**DIN Rail Perforated**

CHM	Height : 5.00 mm Width : 15.00 mm Thickness : 1.00 mm	
-----	---	---

**End Clamp**

SCMN	Height : 18.00 mm Width : 6.10 mm Length : 23.50 mm	
------	---	---

<b>End Cover</b>		
MP1	Height : 26.30 mm Width : 1.00 mm Length : 28.00 mm	
<b>Fixed Bridge</b>		
SLU4-2W	Height : 13.00 mm Pitch : 6.00 mm Length : 10.40 mm	
SLU4-10W	Height : 13.00 mm Pitch : 6.00 mm Length : 58.40 mm	
SLU4-3W	Height : 13.00 mm Pitch : 6.00 mm Length : 16.40 mm	
SLU4-4W	Height : 13.00 mm Pitch : 6.00 mm Length : 22.40 mm	
SLU4-5W	Height : 13.00 mm Pitch : 6.00 mm Length : 28.40 mm	
<b>Marker For Terminal Blocks</b>		
LABEL U6	Pitch : 6.00 mm	
<b>Partition Plate</b>		
MBX	Height : 36.70 mm Width : 1.50 mm Length : 42.70 mm	