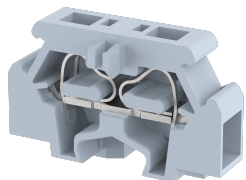


MCT2.5

Terminal Type -MCT2.5 , Mini and Micro Terminal block, nominal voltage: 500 V, nominal current: 24 A , Rated cross-section - 2.5 mm², connection method: Spring Cage Connection, number of connections: 2, cross section: 0.5 mm² - 2.5 mm², mounting type: Panel Mounted



Approvals



General Information

Product Name	MCT2.5
Connection Method	Spring Cage Connection
Rating	500 V/24 A/2.5 mm ² /NAP Nm
HSN Number	85389000
Standard Packing Qty(in No)	500
Country Of Origin	India
Screw thread	NAP

Dimensions & Weight

Width	6 mm	0.24 inch
Length	30 mm	1.18 inch
Height	18 mm	0.71 inch
Weight of std. Packing Unit	1.54 Kg	

Material Data

Insulating Material	Polyamide 6,6
Standard Colour	Gray
Colour Variants	Red , Yellow , Blue , Black , Green , Khakhi ,

Rated Conductor Size

Conductor cross section flexible min	0.2 mm ²
Conductor cross section flexible max	2.5 mm ²
Conductor cross section solid min	0.2 mm ²
Conductor cross section solid max	2.5 mm ²

Ratings - IEC

Connection in acc. with standard	IEC 60947-7-1
Nominal Voltage U_n	500 V
Nominal Current I_n	24 A
Nominal cross section	2.5 mm ²
Short-time current	0.3 kA
Rated surge voltage	6 kV
Degree of pollution	3

Ratings - ATEX

ATEX Standard	EN 60079-7
ATEX Nominal Voltage U_n	400 V
ATEX Nominal Current I_n	20 A
ATEX Cross Sec. Flexible Max.	2.5 mm ²

Ratings - CSA


CSA Standard	
B - CSA Nominal Voltage U_N	0 V
B - CSA Nominal Current I_N	0 A
B - CSA Wire Min	AWG
B - CSA Wire Max	AWG

Ratings - UL

UL Standard	UL 1059
B - UL Nominal Voltage U_N	300 V
B - UL Nominal Current I_N	15 A
B - UL Wire Min	22 AWG
B - UL Wire Max	14 AWG

Product Accessories

End Cover

MEP2.5	Height : 18.00 mm Width : 12.20 mm Length : 28.00 mm	
--------	--	---

Insertion Bridge

MSL2.5	Width : 10.30 mm Pitch : 5.95 mm Length : 15.14 mm	
--------	--	---

Marker For Terminal Blocks

LABEL KN5.5	Width : 6.00 mm	
-------------	-----------------	---

