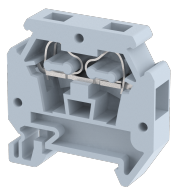


MCT2.5MC

Terminal Type - MCT2.5MC , Mini and Micro Terminal terminal block, nominal voltage: 500 V, nominal current: 24 A, Rated cross-section - 2.5 mm², connection method: Spring Cage connection, number of connections: 2, cross-section: 0.5 mm² - 2.5 mm², , mounting type: TS 15



Approvals

CE

General Information

Product Name	MCT2.5MC
Connection Method	Spring Cage Connection
Rating	500 V/24 A/2.5 mm ² /NAP Nm
HSN Number	85389000
Standard Packing Qty(in No)	100
Country Of Origin	India
Screw thread	NAP

Dimensions & Weight

Width	6 mm	0.24 inch
Length	28 mm	1.1 inch
Height	27 mm	1.06 inch
Weight of std. Packing Unit	0.57 Kg	

Material Data

Insulating Material	Polyamide 6,6
Standard Colour	Gray
Colour Variants	Red , Yellow , Blue , Black , Green , Khakhi ,

Rated Conductor Size

Conductor cross section flexible min	0.5 mm ²
Conductor cross section flexible max	2.5 mm ²
Conductor cross section solid min	0.5 mm ²
Conductor cross section solid max	2.5 mm ²

Ratings - IEC

Connection in acc. with standard	IEC 60947-7-1
Nominal Voltage U_n	500 V
Nominal Current I_n	24 A
Nominal cross section	2.5 mm ²
Short-time current	0.3 kA
Rated surge voltage	8 kV
Degree of pollution	3

Product Accessories

DIN Rail Perforated		
CHM	Height : 5.00 mm Width : 15.00 mm Thickness : 1.00 mm	
End Clamp		
SCMN	Height : 18.00 mm Width : 6.10 mm Length : 23.50 mm	
End Cover		
MEP2.5MC	Height : 19.00 mm Width : 1.20 mm Length : 28.00 mm	
Insertion Bridge		
MSL2.5	Width : 10.30 mm Pitch : 5.95 mm Length : 15.14 mm	
Marker For Terminal Blocks		
LABEL KN5.5	Width : 6.00 mm	
Partition Plate		
MBX	Height : 36.70 mm Width : 1.50 mm Length : 42.70 mm	