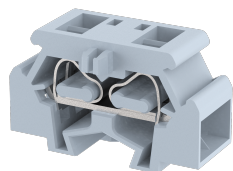


MCT2.5P4

Terminal Type -MCT2.5P4, Feed Through terminal block, nominal voltage: 500 V, nominal current: 24 A , Rated cross-section – 2.5 mm², connection method: Spring clamp connection, number of connections: 4, cross-section: 0.5 mm² – 2.5 mm², mounting type: Panel Mounted



Approvals



General Information

Product Name	MCT2.5P4
Connection Method	Spring Cage Connection
Rating	500 V/24 A/2.5 mm ² /NAP Nm
HSN Number	85389000
Standard Packing Qty(in No)	200
Country Of Origin	India
Screw thread	NAP

Dimensions & Weight

Width	10 mm	0.39 inch
Length	28 mm	1.1 inch
Height	18 mm	0.71 inch
Weight of std. Packing Unit	0.96 Kg	

Material Data

Insulating Material	Polyamide 6,6
Standard Colour	Gray
Colour Variants	Red , Yellow , Blue , Black , Green , Khakhi ,

Rated Conductor Size

Conductor cross section flexible min	0.5 mm ²
Conductor cross section flexible max	2.5 mm ²
Conductor cross section solid min	0.5 mm ²
Conductor cross section solid max	2.5 mm ²

Ratings - IEC

Connection in acc. with standard	IEC 60947-7-1
Nominal Voltage U_n	500 V
Nominal Current I_n	24 A
Nominal cross section	2.5 mm ²
Short-time current	NAP kA
Rated surge voltage	6 kV
Degree of pollution	3

Ratings - ATEX

ATEX Standard	EN 60079-7
ATEX Nominal Voltage U_n	400 V
ATEX Nominal Current I_n	20 A
ATEX Cross Sec. Flexible Max.	2.5 mm ²

Ratings - CSA

CSA Standard	
B - CSA Nominal Voltage U_N	0 V
B - CSA Nominal Current I_N	0 A
B - CSA Wire Min	AWG
B - CSA Wire Max	AWG

Ratings - UL

UL Standard	UL 1059
B - UL Nominal Voltage U_N	300 V
B - UL Nominal Current I_N	15 A
B - UL Wire Min	22 AWG
B - UL Wire Max	14 AWG

Product Accessories

End Cover

MEP2.5	Height : 18.00 mm Width : 12.20 mm Length : 28.00 mm	
--------	--	---

Insertion Bridge

MSL2.5	Width : 10.30 mm Pitch : 5.95 mm Length : 15.14 mm	
--------	--	---

Marker For Terminal Blocks

LABEL KN10	Width : 10.00 mm	
------------	------------------	---

