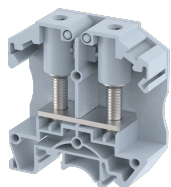


## OAT25

Terminal Type - OAT25 , Feed through terminal block with secured hinged cover, nominal voltage: 1000 V, nominal current: 125 A, connection method: Stud type connection, number of connections: 2, cross section: 1.5 mm<sup>2</sup> - 35 mm<sup>2</sup>, width: 18 mm , length: 60 mm , height : 63 mm , mounting type: TS 35/7.5, TS 35/15 , TS 32



### Approvals

CE

### General Information

Product Name	OAT25
Connection Method	Bolt Connection
Rating	1000 V/125 A/35 mm <sup>2</sup> /3 Nm
HSN Number	85389000
Standard Packing Qty(in No)	50
Country Of Origin	India
Screw thread	M6

### Dimensions & Weight

Width	18 mm	0.71 inch
Length	60 mm	2.36 inch
Height	63 mm	2.48 inch
Weight of std. Packing Unit	2.5 Kg	

### Material Data

Insulating Material	Polyamide 6,6
Standard Colour	Gray
Colour Variants	Red , Yellow , Blue , Black , Green , Khakhi ,

### Rated Conductor Size

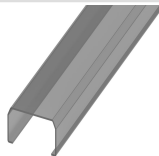
Conductor cross section flexible min	1.5 mm <sup>2</sup>
Conductor cross section flexible max	35 mm <sup>2</sup>
Conductor cross section solid min	1.5 mm <sup>2</sup>
Conductor cross section solid max	35 mm <sup>2</sup>

## Ratings - IEC

Connection in acc. with standard	IEC 60947-7-1
Nominal Voltage $U_n$	1000 V
Nominal Current $I_n$	125 A
Nominal cross section	35 mm <sup>2</sup>
Short-time current	3 kA
Rated surge voltage	8 kV
Degree of pollution	3

## Product Accessories

### Cover Profile

PCK3	Height : 28.00 mm Width : 58.35 mm Thickness : 1.00 mm	
------	--	---


### Cover Profile Carrier

UHDD	Height : 74.50 mm Thickness : 2.00 mm Length : 55.82 mm	
------	---	--

### DIN Rail Perforated

CHKDS	Height : 15.00 mm Width : 35.00 mm Thickness : 1.50 mm	
CHKS	Height : 7.50 mm Width : 35.00 mm Thickness : 1.00 mm	
CHS	Height : 15.00 mm Width : 32.00 mm Thickness : 1.50 mm	

### DIN Rail, Unperforated

CHKD	Height : 15.00 mm Width : 35.00 mm Thickness : 1.50 mm	
CHK	Height : 7.50 mm Width : 35.00 mm Thickness : 1.00 mm	

<b>End Cap</b>		
CHKENDCAP	Height : 14.00 mm Width : 9.00 mm Length : 41.50 mm	
<b>End Clamp</b>		
SCUP	Height : 34.00 mm Length : 44.75 mm	
SCUSL	Height : 41.10 mm Width : 8.00 mm Length : 47.50 mm	
SCUDD	Height : 50.00 mm Width : 10.00 mm Length : 55.60 mm	
DCKN	Height : 33.00 mm Width : 6.00 mm Length : 43.50 mm	
DCKN10	Height : 35.00 mm Width : 10.00 mm Length : 43.50 mm	
SCKN	Height : 34.50 mm Width : 8.00 mm Length : 44.90 mm	
SCUN	Height : 35.50 mm Width : 9.50 mm Length : 50.60 mm	
<b>End Cover</b>		
OEP 25	Height : 53.10 mm Width : 1.50 mm Length : 60.00 mm	
<b>Marker For Terminal Blocks</b>		
LABEL KN17	Width : 17.00 mm	

Marker carriers		
SCUDDMLH	Height : 71.50 mm Width : 10.00 mm Length : 55.60 mm	
SCUNMLH	Height : 53.50 mm Width : 9.50 mm Length : 50.60 mm	
DCKNMLH	Height : 45.50 mm Width : 6.00 mm Length : 43.50 mm	
SCKNMLH	Height : 45.50 mm Width : 8.00 mm Length : 44.90 mm	

