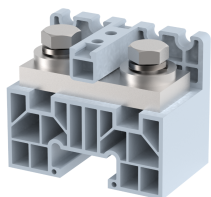


PAT100

Terminal Type - PAT100, High current connectors, nominal voltage: 1000 V, nominal current: 100 A, Rated cross-section: 25 mm², connection method: Bolt connection, number of connections: 2, cross-section: 16 mm² - 50 mm², mounting type: Panel mounted / Surface mounted



Approvals

CE

General Information

Product Name	PAT100
Connection Method	Bolt Connection
Rating	1000 V/100 A/25 mm ² /3 Nm
HSN Number	85389000
Standard Packing Qty(in No)	25
Country Of Origin	India
Screw thread	M6

Dimensions & Weight

Width	30 mm	1.18 inch
Length	50 mm	1.97 inch
Height	40 mm	1.57 inch
Weight of std. Packing Unit	2.2 Kg	

Material Data

Insulating Material	NAV
Standard Colour	Gray
Colour Variants	Red , Yellow , Blue , Black , Green , Khakhi ,

Rated Conductor Size

Conductor cross section flexible min	10 mm ²
Conductor cross section flexible max	25 mm ²
Conductor cross section solid min	10 mm ²
Conductor cross section solid max	25 mm ²

Ratings - IEC

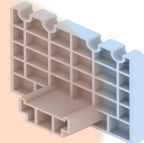
Connection in acc. with standard	IEC 60947-7-1
Nominal Voltage U_n	1000 V
Nominal Current I_n	100 A
Nominal cross section	25 mm ²
Short-time current	NAV kA
Rated surge voltage	8 kV
Degree of pollution	3

Product Accessories

Cover Profile

PCPAT-30-250	Height : 11.50 mm Thickness : 1.50 mm Length : 126.00 mm	
--------------	--	---

End Cover

EPA100	Height : 40.00 mm Width : 27.00 mm Thickness : 5.00 mm Length : 50.00 mm	
--------	---	--

Marker For Terminal Blocks

LABEL KN8	Width : 8.00 mm	
-----------	-----------------	---

Partition Plate

BPAT-30-250	Height : 78.50 mm Thickness : 3.00 mm Length : 120.00 mm	
-------------	--	---