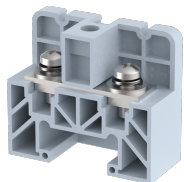


## **PAT30**

Terminal Type - PAT30 , High current connectors, nominal voltage: 800 V , , nominal current: 57 A, Rated cross-section: 10 mm<sup>2</sup>, connection method: Bolt connection, number of connections: 2, cross-section: 4 mm<sup>2</sup> - 10 mm<sup>2</sup> , mounting type: Panel mounted / Surface mounted



### Approvals

CE

### General Information

Product Name	PAT30
Connection Method	Bolt Connection
Rating	800 V/57 A/10 mm <sup>2</sup> /1.2 Nm
HSN Number	85389000
Standard Packing Qty(in No)	50
Country Of Origin	India
Screw thread	M4

### Dimensions & Weight

Width	16 mm	0.63 inch
Length	38 mm	1.5 inch
Height	33 mm	1.3 inch
Weight of std. Packing Unit	1.09 Kg	

### Material Data

Insulating Material	NAV
Standard Colour	Gray
Colour Variants	Red , Yellow , Blue , Black , Green , Khakhi ,

### Rated Conductor Size

Conductor cross section flexible min	4 mm <sup>2</sup>
Conductor cross section flexible max	10 mm <sup>2</sup>
Conductor cross section solid min	4 mm <sup>2</sup>
Conductor cross section solid max	10 mm <sup>2</sup>

### Ratings - IEC


Connection in acc. with standard	IEC 60947-7-1
Nominal Voltage $U_n$	800 V
Nominal Current $I_n$	57 A
Nominal cross section	10 mm <sup>2</sup>
Short-time current	1.2 kA
Rated surge voltage	8 kV
Degree of pollution	3

### Product Accessories

#### End Cover

EPA30	Height : 33.00 mm Width : 26.00 mm Thickness : 4.00 mm Length : 38.00 mm	
-------	---	---

#### Marker For Terminal Blocks

LABEL KN8	Width : 8.00 mm	
-----------	-----------------	--

#### Partition Plate

KBXF	Height : 53.40 mm Thickness : 1.50 mm Length : 54.00 mm	
------	---	---