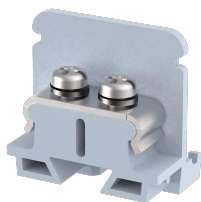


## **PBTM3**

Terminal Type - PBTM3 , Mini Feed-through terminal block, nominal voltage: 250 V, nominal current: 20 A, Rated cross-section - 1.5 mm<sup>2</sup>, connection method: Screw clamp connection, number of connections: 2, cross section: 0.2 mm<sup>2</sup> - 1.5 mm<sup>2</sup>, mounting type: Panel mounted



### Approvals

CE

### General Information

Product Name	PBTM3
Connection Method	Screw Connection
Rating	250 V/20 A/1.5 mm <sup>2</sup> /0.5 Nm
HSN Number	85389000
Standard Packing Qty(in No)	100
Country Of Origin	India
Screw thread	M3

### Dimensions & Weight

Width	6 mm	0.24 inch
Length	25 mm	0.98 inch
Height	25 mm	0.98 inch
Weight of std. Packing Unit	0.62 Kg	

### Material Data

Insulating Material	Polyamide 6,6
Standard Colour	Gray
Colour Variants	

### Rated Conductor Size

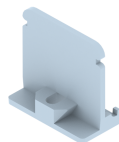
Conductor cross section flexible min	0.2 mm <sup>2</sup>
Conductor cross section flexible max	1.5 mm <sup>2</sup>
Conductor cross section solid min	0.2 mm <sup>2</sup>
Conductor cross section solid max	1.5 mm <sup>2</sup>

**Ratings - IEC**

Connection in acc. with standard	IEC 60947-7-1
Nominal Voltage $U_n$	250 V
Nominal Current $I_n$	20 A
Nominal cross section	1.5 mm <sup>2</sup>
Short-time current	0.18 kA
Rated surge voltage	4 kV
Degree of pollution	3

**Product Accessories**

**End Cover**

EPBM4	Height : 25.00 mm Width : 12.50 mm Length : 24.20 mm	
-------	--	---

**Partition Plate**

MBX	Height : 36.70 mm Width : 1.50 mm Length : 42.70 mm	
-----	---	--

