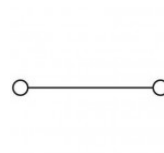
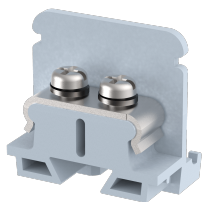


PBTM4

Terminal Type - PBTM4, Mini and Micro Feed-through terminal block, nominal voltage: 250 V, nominal current: 20 A, Rated cross-section - 1.5 mm², connection method: Screw clamp connection, number of connections: 2, cross-section: 0.2 mm² - 1.5 mm², mounting type: Panel mounted



Approvals

CE

General Information

Product Name	PBTM4
Connection Method	Screw Connection
Rating	250 V/20 A/1.5 mm ² /1.2 Nm
HSN Number	85389000
Standard Packing Qty(in No)	100
Country Of Origin	India
Screw thread	M4

Dimensions & Weight

Width	9.5 mm	0.37 inch
Length	25 mm	0.98 inch
Height	25 mm	0.98 inch
Weight of std. Packing Unit	0.55 Kg	

Material Data

Insulating Material	Polyamide 6,6
Standard Colour	Gray
Colour Variants	Red , Yellow , Blue , Black , Green , Khakhi ,

Rated Conductor Size

Conductor cross section flexible min	0.2 mm ²
Conductor cross section flexible max	1.5 mm ²
Conductor cross section solid min	0.2 mm ²
Conductor cross section solid max	1.5 mm ²

Ratings - IEC

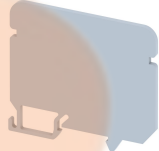
Connection in acc. with standard	IEC 60947-7-1
Nominal Voltage U_n	250 V
Nominal Current I_n	20 A
Nominal cross section	1.5 mm ²
Short-time current	0.18 kA
Rated surge voltage	4 kV
Degree of pollution	3

Product Accessories

End Cover

EPBM4	Height : 25.00 mm Width : 12.50 mm Length : 24.20 mm	
-------	--	---

Partition Plate

MBX	Height : 36.70 mm Width : 1.50 mm Length : 42.70 mm	
-----	---	--

