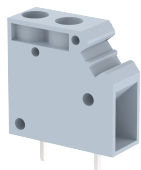


PUT2.5

Terminal Type - PUT2.5, PCB Connector, nominal voltage: 500 V, nominal current: 15 A, connection method: Screw connection, number of connections: 1 , cross-section: 0.5 mm² - 2.5 mm², AWG: 24 - 12, mounting type - Printed circuit board (PCB)



Approvals



General Information

Product Name	PUT2.5
Connection Method	Screw Connection
Rating	500 V/15 A/2.5 mm ² /0.5 Nm
HSN Number	85389000
Standard Packing Qty(in No)	250
Country Of Origin	India
Screw thread	M3

Dimensions & Weight

Width	7.5 mm	0.3 inch
Length	19 mm	0.75 inch
Height	18.5 mm	0.73 inch
Weight of std. Packing Unit	1.08 Kg	

Material Data

Insulating Material	Polyamide 6,6
Standard Colour	Gray
Colour Variants	

Rated Conductor Size

Conductor cross section flexible min	0.5 mm ²
Conductor cross section flexible max	2.5 mm ²
Conductor cross section solid min	0.5 mm ²
Conductor cross section solid max	2.5 mm ²

Ratings - IEC

Connection in acc. with standard	IEC 60947-7-1
Nominal Voltage U_n	500 V
Nominal Current I_n	15 A
Nominal cross section	2.5 mm ²
Short-time current	NAV kA
Rated surge voltage	NAV kV
Degree of pollution	3

Ratings - ATEX

ATEX Standard	
ATEX Nominal Voltage U_n	0 V
ATEX Nominal Current I_n	A
ATEX Cross Sec. Flexible Max.	mm ²

Ratings - CSA

CSA Standard	CSA C22.2 NO 158
B - CSA Nominal Voltage U_N	300 V
B - CSA Nominal Current I_N	20 A
B - CSA Wire Min	24 AWG
B - CSA Wire Max	12 AWG

Ratings - UL

UL Standard	UL 1059
B - UL Nominal Voltage U_N	300 V
B - UL Nominal Current I_N	20 A
B - UL Wire Min	24 AWG
B - UL Wire Max	12 AWG

Product Accessories