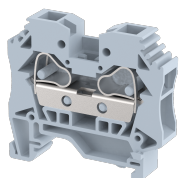


## SCT10

Terminal Type - SCT10, Feed Through terminal block, nominal voltage: 800 V, nominal current: 57 A, Rated cross-section - 10 mm<sup>2</sup>, connection method: Spring Cage connection with side wire entry, number of connections: 2, cross-section: 0.5 mm<sup>2</sup> - 10 mm<sup>2</sup>, mounting type: TS 35/7.5, TS 35/15



### Approvals



### General Information

|                             |                                       |
|-----------------------------|---------------------------------------|
| Product Name                | SCT10                                 |
| Connection Method           | Spring Cage Connection                |
| Rating                      | 800 V/57 A/10 mm <sup>2</sup> /NAP Nm |
| HSN Number                  | 85389000                              |
| Standard Packing Qty(in No) | 100                                   |
| Country Of Origin           | India                                 |
| Screw thread                | NA                                    |

### Dimensions & Weight

|                             |         |           |
|-----------------------------|---------|-----------|
| Width                       | 10 mm   | 0.39 inch |
| Length                      | 52 mm   | 2.05 inch |
| Height                      | 46.5 mm | 1.83 inch |
| Weight of std. Packing Unit | 1.93 Kg |           |

### Material Data

|                     |  |
|---------------------|--|
| Insulating Material | Polyamide 6,6                                  |
| Standard Colour     | Gray   |
| Colour Variants     | Red , Yellow , Blue , Black , Green , Khakhi , |

### Rated Conductor Size

|                                      |                     |
|--------------------------------------|---------------------|
| Conductor cross section flexible min | 1.5 mm <sup>2</sup> |
| Conductor cross section flexible max | 10 mm <sup>2</sup>  |
| Conductor cross section solid min    | 1.5 mm <sup>2</sup> |
| Conductor cross section solid max    | 10 mm <sup>2</sup>  |

**Ratings - IEC**

|                                  |                    |
|----------------------------------|--------------------|
| Connection in acc. with standard | IEC 60947-7-1      |
| Nominal Voltage $U_n$            | 800 V              |
| Nominal Current $I_n$            | 57 A               |
| Nominal cross section            | 10 mm <sup>2</sup> |
| Short-time current               | 1.2 kA             |
| Rated surge voltage              | 8 kV               |
| Degree of pollution              | 3                  |

**Ratings - ATEX**

|                               |                   |
|-------------------------------|-------------------|
| ATEX Standard                 |                   |
| ATEX Nominal Voltage $U_n$    | 0 V               |
| ATEX Nominal Current $I_n$    | 0 A               |
| ATEX Cross Sec. Flexible Max. | 0 mm <sup>2</sup> |



**Ratings - CSA**

|                               |                  |
|-------------------------------|------------------|
| CSA Standard                  | CSA C22.2 NO 158 |
| B - CSA Nominal Voltage $U_n$ | 600 V            |
| B - CSA Nominal Current $I_n$ | 50 A             |
| B - CSA Wire Min              | 16 AWG           |
| B - CSA Wire Max              | 8 AWG            |

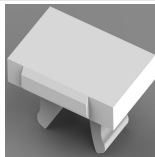
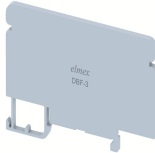
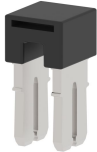
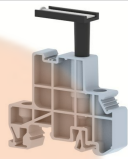
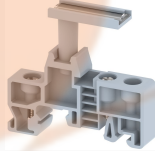
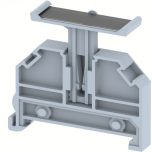

**Ratings - UL**

|                              |     |
|------------------------------|-----|
| UL Standard                  |     |
| B - UL Nominal Voltage $U_n$ | 0 V |
| B - UL Nominal Current $I_n$ | 0 A |
| B - UL Wire Min              | AWG |
| B - UL Wire Max              | AWG |

**Product Accessories**

| DIN Rail Perforated |  |   |
|---------------------|--|---|
| CHKDS               | Height : 15.00 mm<br>Width : 35.00 mm<br>Thickness : 1.50 mm |  |
| CHKS                | Height : 7.50 mm<br>Width : 35.00 mm<br>Thickness : 1.00 mm  |  |

| <b>DIN Rail, Unperforated</b> |  |   |
|-------------------------------|--|---|
| CHKD                          | Height : 15.00 mm<br>Width : 35.00 mm<br>Thickness : 1.50 mm |    |
| CHK                           | Height : 7.50 mm<br>Width : 35.00 mm<br>Thickness : 1.00 mm  |    |
| <b>End Clamp</b>              |  |   |
| SCUP                          | Height : 34.00 mm<br>Length : 44.75 mm                       |    |
| SCUSL                         | Height : 41.10 mm<br>Width : 8.00 mm<br>Length : 47.50 mm    |    |
| SCUDD                         | Height : 50.00 mm<br>Width : 10.00 mm<br>Length : 55.60 mm   |   |
| DCKN                          | Height : 33.00 mm<br>Width : 6.00 mm<br>Length : 43.50 mm    |  |
| DCKN10                        | Height : 35.00 mm<br>Width : 10.00 mm<br>Length : 43.50 mm   |  |
| SCKN                          | Height : 34.50 mm<br>Width : 8.00 mm<br>Length : 44.90 mm    |  |
| SCUN                          | Height : 35.50 mm<br>Width : 9.50 mm<br>Length : 50.60 mm    |  |
| <b>End Cover</b>              |  |   |
| SEP10                         | Height : 35.00 mm<br>Width : 1.50 mm<br>Length : 52.00 mm    |  |

| Marker For Terminal Blocks |  |   |
|----------------------------|--|---|
| LABEL KN10                 | Width : 10.00 mm   |    |
| Partition Plate            |  |   |
| DBF-3                      | Height : 38.40 mm<br>Width : 3.00 mm<br>Length : 78.00 mm  |    |
| Plug-in Bridge/Jumper      |  |   |
| SSL10                      | Height : 25.60 mm<br>Width : 9.40 mm<br>Length : 9.00 mm   |    |
| Marker carriers            |  |   |
| SCUDDMLH                   | Height : 71.50 mm<br>Width : 10.00 mm<br>Length : 55.60 mm |   |
| SCUNMLH                    | Height : 53.50 mm<br>Width : 9.50 mm<br>Length : 50.60 mm  |  |
| DCKNMLH                    | Height : 45.50 mm<br>Width : 6.00 mm<br>Length : 43.50 mm  |  |
| SCKNMLH                    | Height : 45.50 mm<br>Width : 8.00 mm<br>Length : 44.90 mm  |  |