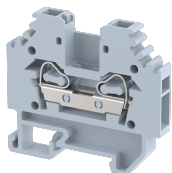


SCT2.5MC

Terminal Type - SCT2.5MC, Mini and Micro terminal block, nominal voltage: 800 V, nominal current: 24 A, Rated cross-section: 2.5 mm², connection method: Spring Cage connection, number of connections: 2, cross-section: 0.5 mm² - 2.5 mm², mounting type: TS15



Approvals

CE

General Information

Product Name	SCT2.5MC
Connection Method	Spring Cage Connection
Rating	800 V/24 A/2.5 mm ² /NAP Nm
HSN Number	85389000
Standard Packing Qty(in No)	100
Country Of Origin	India
Screw thread	NA

Dimensions & Weight

Width	5 mm	0.2 inch
Length	38 mm	1.5 inch
Height	34 mm	1.34 inch
Weight of std. Packing Unit	1.08 Kg	

Material Data

Insulating Material	Polyamide 6,6
Standard Colour	Gray
Colour Variants	Red , Yellow , Blue , Black , Green , Khakhi ,

Rated Conductor Size

Conductor cross section flexible min	0.5 mm ²
Conductor cross section flexible max	2.5 mm ²
Conductor cross section solid min	0.5 mm ²
Conductor cross section solid max	2.5 mm ²

Ratings - IEC

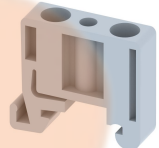
Connection in acc. with standard	IEC 60947-7-1
Nominal Voltage U_n	800 V
Nominal Current I_n	24 A
Nominal cross section	2.5 mm ²
Short-time current	0.3 kA
Rated surge voltage	8 kV
Degree of pollution	3

Product Accessories

DIN Rail Perforated

CHM	Height : 5.00 mm Width : 15.00 mm Thickness : 1.00 mm	
-----	---	---

End Clamp

SCMN	Height : 18.00 mm Width : 6.10 mm Length : 23.50 mm	
------	---	--

End Cover

SEP2.5	Height : 30.50 mm Width : 2.50 mm Length : 38.00 mm	
--------	---	---

Marker For Terminal Blocks

LABEL KN5	Width : 5.00 mm	
-----------	-----------------	---

Partition Plate

MBX	Height : 36.70 mm Width : 1.50 mm Length : 42.70 mm	
-----	---	---

Plug-in Bridge/Jumper

SSL2.5	Height : 22.80 mm Width : 4.85 mm Length : 8.40 mm	
--------	--	---