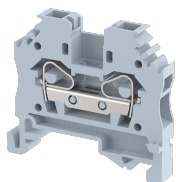


## SCT4

Terminal Type - SCT4 , Feed-through terminal block, nominal voltage: 800 V, nominal current: 32 A, Rated cross-section - 4 mm<sup>2</sup>, connection method: Spring Cage connection with side wire entry, number of connections: 2, cross-section: 0.5 mm<sup>2</sup> - 4 mm<sup>2</sup>, AWG: 20 - 12, mounting type: TS 35/7.5, TS 35/15



### Approvals



### General Information

Product Name	SCT4
Connection Method	Spring Cage Connection
Rating	800 V/32 A/4 mm <sup>2</sup> /NAP Nm
HSN Number	85389000
Standard Packing Qty(in No)	100
Country Of Origin	India
Screw thread	NA

### Dimensions & Weight

Width	6 mm	0.24 inch
Length	42.5 mm	1.67 inch
Height	37 mm	1.46 inch
Weight of std. Packing Unit	0.66 Kg	

### Material Data

Insulating Material	Polyamide 6,6
Standard Colour	Gray
Colour Variants	Red , Yellow , Blue , Black , Green , Khakhi ,

### Rated Conductor Size

Conductor cross section flexible min	0.5 mm <sup>2</sup>
Conductor cross section flexible max	4 mm <sup>2</sup>
Conductor cross section solid min	0.5 mm <sup>2</sup>
Conductor cross section solid max	4 mm <sup>2</sup>

**Ratings - IEC**

Connection in acc. with standard	IEC 60947-7-1
Nominal Voltage $U_n$	800 V
Nominal Current $I_n$	32 A
Nominal cross section	4 mm <sup>2</sup>
Short-time current	0.48 kA
Rated surge voltage	8 kV
Degree of pollution	3

**Ratings - ATEX**

ATEX Standard	EN 60079-7
ATEX Nominal Voltage $U_n$	630 V
ATEX Nominal Current $I_n$	24 A
ATEX Cross Sec. Flexible Max.	4 mm <sup>2</sup>



**Ratings - CSA**

CSA Standard	CSA C22.2 NO 158
B - CSA Nominal Voltage $U_n$	600 V
B - CSA Nominal Current $I_n$	20 A
B - CSA Wire Min	20 AWG
B - CSA Wire Max	12 AWG

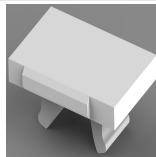
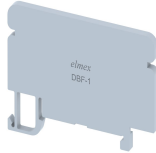

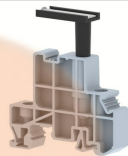
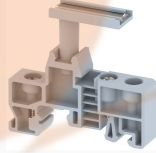
**Ratings - UL**

UL Standard	
B - UL Nominal Voltage $U_n$	0 V
B - UL Nominal Current $I_n$	0 A
B - UL Wire Min	AWG
B - UL Wire Max	AWG

**Product Accessories**

DIN Rail Perforated		
CHKDS	Height : 15.00 mm Width : 35.00 mm Thickness : 1.50 mm	
CHKS	Height : 7.50 mm Width : 35.00 mm Thickness : 1.00 mm	

<b>DIN Rail, Unperforated</b>		
CHKD	Height : 15.00 mm Width : 35.00 mm Thickness : 1.50 mm	
CHK	Height : 7.50 mm Width : 35.00 mm Thickness : 1.00 mm	
<b>End Clamp</b>		
SCUP	Height : 34.00 mm Length : 44.75 mm	
SCUSL	Height : 41.10 mm Width : 8.00 mm Length : 47.50 mm	
SCUDD	Height : 50.00 mm Width : 10.00 mm Length : 55.60 mm	
DCKN	Height : 33.00 mm Width : 6.00 mm Length : 43.50 mm	
DCKN10	Height : 35.00 mm Width : 10.00 mm Length : 43.50 mm	
SCKN	Height : 34.50 mm Width : 8.00 mm Length : 44.90 mm	
SCUN	Height : 35.50 mm Width : 9.50 mm Length : 50.60 mm	
<b>End Cover</b>		
SEP4	Height : 32.50 mm Width : 2.50 mm Length : 40.00 mm	

<b>Marker For Terminal Blocks</b>		
LABEL KN5.5	Width : 6.00 mm	
<b>Partition Plate</b>		
DBF-1	Height : 31.40 mm Width : 3.00 mm Length : 60.00 mm	
<b>Plug-in Bridge/Jumper</b>		
SSL4	Height : 23.80 mm Width : 6.00 mm Length : 7.50 mm	
<b>Marker carriers</b>		
SCUDDMLH	Height : 71.50 mm Width : 10.00 mm Length : 55.60 mm	
SCUNMLH	Height : 53.50 mm Width : 9.50 mm Length : 50.60 mm	
DCKNMLH	Height : 45.50 mm Width : 6.00 mm Length : 43.50 mm	
SCKNMLH	Height : 45.50 mm Width : 8.00 mm Length : 44.90 mm	