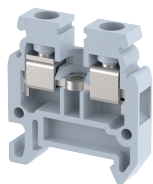


SUT1.5

Terminal Type - SUT1.5, Mini and Micro Feed-through terminal block, nominal voltage: 320 V, nominal current: 18 A, Rated cross-section - 1.5 mm², connection method: Screw clamp connection, number of connections: 2, cross-section: 0.5 mm² - 2.5 mm², mounting type: TS 15



Approvals



General Information

Product Name	SUT1.5
Connection Method	Screw Connection
Rating	320 V/18 A/1.5 mm ² /0.4 Nm
HSN Number	85389000
Standard Packing Qty(in No)	100
Country Of Origin	India
Screw thread	M2.6

Dimensions & Weight

Width	5 mm	0.2 inch
Length	23.5 mm	0.93 inch
Height	25.5 mm	1 inch
Weight of std. Packing Unit	0.34 Kg	

Material Data

Insulating Material	Polyamide 6,6
Standard Colour	Gray
Colour Variants	Red , Yellow , Blue , Black , Green , Khakhi ,

Rated Conductor Size

Conductor cross section flexible min	0.5 mm ²
Conductor cross section flexible max	1.5 mm ²
Conductor cross section solid min	0.5 mm ²
Conductor cross section solid max	2.5 mm ²

Ratings - IEC

Connection in acc. with standard	IEC 60947-7-1
Nominal Voltage U_n	320 V
Nominal Current I_n	18 A
Nominal cross section	1.5 mm ²
Short-time current	0.18 kA
Rated surge voltage	4 kV
Degree of pollution	3

Ratings - ATEX

ATEX Standard	
ATEX Nominal Voltage U_n	0 V
ATEX Nominal Current I_n	A
ATEX Cross Sec. Flexible Max.	mm ²

Ratings - CSA

CSA Standard	CSA C22.2 NO 158
B - CSA Nominal Voltage U_n	300 V
B - CSA Nominal Current I_n	18 A
B - CSA Wire Min	24 AWG
B - CSA Wire Max	14 AWG

Ratings - UL

UL Standard	UL 1059
B - UL Nominal Voltage U_n	300 V
B - UL Nominal Current I_n	18 A
B - UL Wire Min	24 AWG
B - UL Wire Max	14 AWG

Product Accessories

DIN Rail Perforated

CHM	Height : 5.00 mm Width : 15.00 mm Thickness : 1.00 mm	
-----	---	---

End Clamp

SCMN	Height : 18.00 mm Width : 6.10 mm Length : 23.50 mm	
------	---	---

End Cover		
ES2	Height : 21.40 mm Width : 1.50 mm Length : 23.50 mm	
Fixed Bridge		
CCLA1.5-2W	Height : 11.00 mm Pitch : 5.00 mm Length : 9.00 mm	
CCLA1.5-10W	Height : 11.00 mm Pitch : 5.00 mm Length : 48.40 mm	
CCLA1.5-3W	Height : 11.00 mm Pitch : 5.00 mm Length : 13.00 mm	
CCLA1.5-4W	Height : 11.00 mm Pitch : 5.00 mm Length : 18.00 mm	
CCLA1.5-5W	Height : 11.00 mm Pitch : 5.00 mm Length : 24.20 mm	
Marker For Terminal Blocks		
LABEL KN5	Width : 5.00 mm	
Partition Plate		
MBX	Height : 36.70 mm Width : 1.50 mm Length : 42.70 mm	