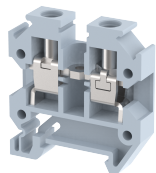


SUT4

Terminal Type - SUT4, Mini and Micro feed through terminal block, nominal voltage: 500 V, nominal current: 32 A, Rated cross-section - 4 mm², connection method: Screw connection, number of connections: 2, cross-section: 0.5 mm² - 4 mm², AWG: 24 - 12, mounting type: TS15



Approvals



General Information

Product Name	SUT4
Connection Method	Screw Connection
Rating	500 V/32 A/4 mm ² /0.5 Nm
HSN Number	85389000
Standard Packing Qty(in No)	100
Country Of Origin	India
Screw thread	M3

Dimensions & Weight

Width	6 mm	0.24 inch
Length	28.5 mm	1.12 inch
Height	29.7 mm	1.17 inch
Weight of std. Packing Unit	0.54 Kg	

Material Data

Insulating Material	Polyamide 6,6
Standard Colour	Gray
Colour Variants	Red , Yellow , Blue , Black , Green , Khakhi ,

Rated Conductor Size

Conductor cross section flexible min	0.5 mm ²
Conductor cross section flexible max	4 mm ²
Conductor cross section solid min	0.5 mm ²
Conductor cross section solid max	4 mm ²

Ratings - IEC

Connection in acc. with standard	IEC 60947-7-1
Nominal Voltage U_n	500 V
Nominal Current I_n	32 A
Nominal cross section	4 mm ²
Short-time current	0.48 kA
Rated surge voltage	4 kV
Degree of pollution	3

Ratings - ATEX

ATEX Standard	EN 60079-7
ATEX Nominal Voltage U_n	320 V
ATEX Nominal Current I_n	24 A
ATEX Cross Sec. Flexible Max.	2.5 mm ²

Ratings - CSA

CSA Standard	CSA C22.2 NO 158
B - CSA Nominal Voltage U_n	300 V
B - CSA Nominal Current I_n	22 A
B - CSA Wire Min	24 AWG
B - CSA Wire Max	12 AWG

Ratings - UL

UL Standard	UL 1059
B - UL Nominal Voltage U_n	300 V
B - UL Nominal Current I_n	22 A
B - UL Wire Min	24 AWG
B - UL Wire Max	12 AWG

Product Accessories

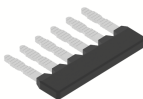
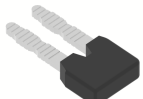
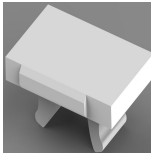
DIN Rail Perforated

CHM	Height : 5.00 mm Width : 15.00 mm Thickness : 1.00 mm	
-----	---	---

End Clamp

SCMN	Height : 18.00 mm Width : 6.10 mm Length : 23.50 mm	
------	---	---

End Cover		
ES4	Height : 25.70 mm Width : 1.50 mm Length : 28.50 mm	
Fixed Bridge		
CCLADD-2W	Height : 14.00 mm Pitch : 6.00 mm Length : 11.00 mm	
CCLADD-10W	Height : 14.00 mm Pitch : 6.00 mm Length : 59.00 mm	
CCLADD-3W	Height : 14.00 mm Pitch : 6.00 mm Length : 17.00 mm	
CCLADD-4W	Height : 14.00 mm Pitch : 6.00 mm Length : 23.00 mm	
CCLADD-5W	Height : 14.00 mm Pitch : 6.00 mm Length : 29.00 mm	
CCLADD-6W	Height : 14.00 mm Pitch : 6.00 mm Length : 35.00 mm	
Insertion Bridge		
SLC4N-10W	Width : 58.60 mm Pitch : 6.00 mm Length : 23.00 mm	
SLC4N-3W	Width : 16.65 mm Pitch : 6.00 mm Length : 23.00 mm	
SLC4N-4W	Width : 22.65 mm Pitch : 6.00 mm Length : 23.00 mm	
SLC4N-5W	Width : 28.65 mm Pitch : 6.00 mm Length : 23.00 mm	

Insertion Bridge		
SLC4N-6W	Width : 34.60 mm Pitch : 6.00 mm Length : 23.00 mm	
SLC4N-2W	Width : 10.91 mm Pitch : 6.00 mm Length : 23.00 mm	
Marker For Terminal Blocks		
LABEL KN5.5	Width : 6.00 mm	
Partition Plate		
MBX	Height : 36.70 mm Width : 1.50 mm Length : 42.70 mm	