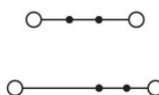
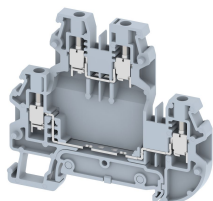


TQ2.5-2T

Terminal Type - TQ2.5-2T, Multi-level Feed-through terminal block, nominal voltage: 500 V, nominal current: 24 A, Rated cross-section: 2.5 mm², connection method: Screw connection, number of connections: 4, cross-section: 0.14 mm² - 4.0 mm², mounting type: TS 35/7.5, TS 35/15



Approvals

CE

General Information

Product Name	TQ2.5-2T
Connection Method	Screw Connection
Rating	500 V/24 A/2.5 mm ² /0.4 Nm
HSN Number	85389000
Standard Packing Qty(in No)	100
Country Of Origin	India
Screw thread	M2.6

Dimensions & Weight

Width	5 mm	0.2 inch
Length	70 mm	2.76 inch
Height	65.2 mm	2.57 inch
Weight of std. Packing Unit	1.4 Kg	

Material Data

Insulating Material	Polyamide 6,6
Standard Colour	Gray
Colour Variants	Red , Yellow , Blue , Black , Green , Khakhi ,

Rated Conductor Size

Conductor cross section flexible min	0.14 mm ²
Conductor cross section flexible max	2.5 mm ²
Conductor cross section solid min	0.14 mm ²
Conductor cross section solid max	4 mm ²

Ratings - IEC

Connection in acc. with standard	IEC 60947-7-1
Nominal Voltage U_n	500 V
Nominal Current I_n	24 A
Nominal cross section	2.5 mm ²
Short-time current	0.3 kA
Rated surge voltage	6 kV
Degree of pollution	3

Ratings - ATEX

ATEX Standard	
ATEX Nominal Voltage U_n	0 V
ATEX Nominal Current I_n	A
ATEX Cross Sec. Flexible Max.	mm ²



Ratings - CSA

CSA Standard	CSA C22.2 NO 158
B - CSA Nominal Voltage U_n	300 V
B - CSA Nominal Current I_n	20 A
B - CSA Wire Min	24 AWG
B - CSA Wire Max	12 AWG

Ratings - UL

UL Standard	UL 1059
B - UL Nominal Voltage U_n	300 V
B - UL Nominal Current I_n	20 A
B - UL Wire Min	24 AWG
B - UL Wire Max	12 AWG

Product Accessories

DIN Rail Perforated		
CHKDS	Height : 15.00 mm Width : 35.00 mm Thickness : 1.50 mm	
CHKS	Height : 7.50 mm Width : 35.00 mm Thickness : 1.00 mm	

DIN Rail, Unperforated		
CHKD	Height : 15.00 mm Width : 35.00 mm Thickness : 1.50 mm	
CHK	Height : 7.50 mm Width : 35.00 mm Thickness : 1.00 mm	
End Cap		
CHKENDCAP	Height : 14.00 mm Width : 9.00 mm Length : 41.50 mm	
End Clamp		
SCUP	Height : 34.00 mm Length : 44.75 mm	
SCEC35	Height : 31.50 mm Width : 8.00 mm Length : 45.80 mm	
SCUSL	Height : 41.10 mm Width : 8.00 mm Length : 47.50 mm	
SCUDD	Height : 50.00 mm Width : 10.00 mm Length : 55.60 mm	
SCKN	Height : 34.50 mm Width : 8.00 mm Length : 44.90 mm	
SCUN	Height : 35.50 mm Width : 9.50 mm Length : 50.60 mm	
End Cover		
CTP2.5_4-2T	Height : 49.45 mm Width : 5.00 mm Thickness : 2.50 mm Length : 69.70 mm	

Marker For Terminal Blocks		
LABEL KN5	Width : 5.00 mm	

Partition Plate		
BPN70	Height : 67.50 mm Width : 3.00 mm Length : 125.00 mm	

Plug-in Bridge/Jumper		
SLPU5-10W	Height : 26.00 mm Width : 49.15 mm Pitch : 5.00 mm	
SLPU5-2W	Height : 26.00 mm Width : 9.15 mm Pitch : 5.00 mm	
SLPU5-3W	Height : 26.00 mm Width : 14.15 mm Pitch : 5.00 mm	
SLPU5-4W	Height : 26.00 mm Width : 19.15 mm Pitch : 5.00 mm	
SLPU5-5W	Height : 26.00 mm Width : 24.15 mm Pitch : 5.00 mm	
SLPU5-6W	Height : 26.00 mm Width : 29.15 mm Pitch : 5.00 mm	
SLPU5-7W	Height : 26.00 mm Width : 34.15 mm Pitch : 5.00 mm	

Marker carriers		
SCUDDMLH	Height : 71.50 mm Width : 10.00 mm Length : 55.60 mm	

Marker carriers		
SCUNMLH	Height : 53.50 mm Width : 9.50 mm Length : 50.60 mm	
DSDDM2.5MLH	Height : 24.10 mm Width : 5.00 mm Pitch : 5.00 mm Length : 19.70 mm	
DCKNMLH	Height : 45.50 mm Width : 6.00 mm Length : 43.50 mm	
SCKNMLH	Height : 45.50 mm Width : 8.00 mm Length : 44.90 mm	

