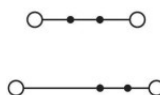
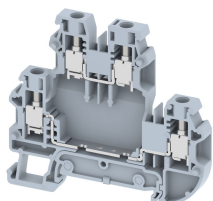


TQ4-2T

Terminal Type - TQ4-2T, Multi-level Feed-through terminal block, nominal voltage: 500 V, nominal current: 32 A, Rated cross-section: 4.0 mm², connection method: Screw connection, number of connections: 4, cross-section: 0.14 mm² - 6 mm², mounting type: TS 35/7.5, TS 35/15



Approvals

CE

General Information

| | |
|-----------------------------|--------------------------------------|
| Product Name | TQ4-2T |
| Connection Method | Screw Connection |
| Rating | 500 V/32 A/4 mm ² /0.5 Nm |
| HSN Number | 85389000 |
| Standard Packing Qty(in No) | 100 |
| Country Of Origin | India |
| Screw thread | M3 |

Dimensions & Weight

| | | |
|-----------------------------|---------|-----------|
| Width | 6 mm | 0.24 inch |
| Length | 70 mm | 2.76 inch |
| Height | 62.5 mm | 2.46 inch |
| Weight of std. Packing Unit | 1.07 Kg | |

Material Data

| | |
|---------------------|--|
| Insulating Material | Polyamide 6,6 |
| Standard Colour | Gray |
| Colour Variants | Red , Yellow , Blue , Black , Green , Khakhi , |

Rated Conductor Size

| | |
|--------------------------------------|----------------------|
| Conductor cross section flexible min | 0.14 mm ² |
| Conductor cross section flexible max | 4 mm ² |
| Conductor cross section solid min | 0.14 mm ² |
| Conductor cross section solid max | 6 mm ² |

Ratings - IEC

| | |
|----------------------------------|-------------------|
| Connection in acc. with standard | IEC 60947-7-1 |
| Nominal Voltage U_n | 500 V |
| Nominal Current I_n | 32 A |
| Nominal cross section | 4 mm ² |
| Short-time current | 0.48 kA |
| Rated surge voltage | 8 kV |
| Degree of pollution | 3 |

Ratings - ATEX

| | |
|-------------------------------|-----------------|
| ATEX Standard | |
| ATEX Nominal Voltage U_n | V |
| ATEX Nominal Current I_n | A |
| ATEX Cross Sec. Flexible Max. | mm ² |



Ratings - CSA

| | |
|-------------------------------|------------------|
| CSA Standard | CSA C22.2 NO 158 |
| B - CSA Nominal Voltage U_n | 300 V |
| B - CSA Nominal Current I_n | 30 A |
| B - CSA Wire Min | 24 AWG |
| B - CSA Wire Max | 10 AWG |

Ratings - UL

| | |
|------------------------------|---------|
| UL Standard | UL 1059 |
| B - UL Nominal Voltage U_n | 300 V |
| B - UL Nominal Current I_n | 30 A |
| B - UL Wire Min | 24 AWG |
| B - UL Wire Max | 10 AWG |

Product Accessories

| DIN Rail Perforated | | |
|---------------------|--|---|
| CHKDS | Height : 15.00 mm Width : 35.00 mm Thickness : 1.50 mm |  |
| CHKS | Height : 7.50 mm Width : 35.00 mm Thickness : 1.00 mm |  |

| DIN Rail, Unperforated | | |
|-------------------------------|--|---|
| CHKD | Height : 15.00 mm Width : 35.00 mm Thickness : 1.50 mm |  |
| CHK | Height : 7.50 mm Width : 35.00 mm Thickness : 1.00 mm |  |
| End Cap | | |
| CHKENDCAP | Height : 14.00 mm Width : 9.00 mm Length : 41.50 mm |  |
| End Clamp | | |
| SCUP | Height : 34.00 mm Length : 44.75 mm |  |
| SCEC35 | Height : 31.50 mm Width : 8.00 mm Length : 45.80 mm |  |
| SCUSL | Height : 41.10 mm Width : 8.00 mm Length : 47.50 mm |  |
| SCUDD | Height : 50.00 mm Width : 10.00 mm Length : 55.60 mm |  |
| DCKN | Height : 33.00 mm Width : 6.00 mm Length : 43.50 mm |  |
| DCKN10 | Height : 35.00 mm Width : 10.00 mm Length : 43.50 mm |  |
| SCKN | Height : 34.50 mm Width : 8.00 mm Length : 44.90 mm |  |
| SCUN | Height : 35.50 mm Width : 9.50 mm Length : 50.60 mm |  |

| End Cover | | |
|-----------------------------------|--|---|
| CTP2.5_4-2T | Height : 49.45 mm Width : 5.00 mm Thickness : 2.50 mm Length : 69.70 mm |  |
| Marker For Terminal Blocks | | |
| LABEL KN5.5 | Width : 6.00 mm |  |
| Partition Plate | | |
| BPN70 | Height : 67.50 mm Width : 3.00 mm Length : 125.00 mm |  |
| Plug-in Bridge/Jumper | | |
| SLPU6-2W | Height : 26.00 mm Width : 10.15 mm Pitch : 6.00 mm |  |
| SLPU6-10W | Height : 26.00 mm Width : 58.15 mm Pitch : 6.00 mm |  |
| SLPU6-3W | Height : 26.00 mm Width : 16.15 mm Pitch : 6.00 mm |  |
| SLPU6-4W | Height : 26.00 mm Width : 22.15 mm Pitch : 6.00 mm |  |
| SLPU6-5W | Height : 26.00 mm Width : 28.15 mm Pitch : 6.00 mm |  |
| SLPU6-6W | Height : 26.00 mm Width : 34.15 mm Pitch : 6.00 mm |  |
| Marker carriers | | |
| SCUDDMLH | Height : 71.50 mm Width : 10.00 mm Length : 55.60 mm |  |

| Marker carriers | | |
|------------------------|--|---|
| DSDDM2.5MLH | Height : 24.10 mm Width : 5.00 mm Pitch : 5.00 mm Length : 19.70 mm |  |
| SCUNMLH | Height : 53.50 mm Width : 9.50 mm Length : 50.60 mm |  |
| DCKNMLH | Height : 45.50 mm Width : 6.00 mm Length : 43.50 mm |  |
| SCKNMLH | Height : 45.50 mm Width : 8.00 mm Length : 44.90 mm |  |

