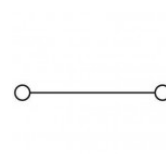
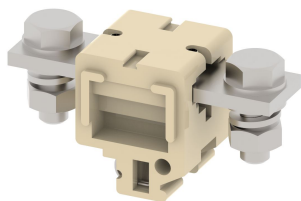


## CBT300

Terminal Type - CBT300, High Current connectors, nominal voltage: 1000 V, nominal current: 300 A, Rated cross-section - 120 mm<sup>2</sup>, connection method: Bolt connection, number of connections: 2, cross-section: 70 mm<sup>2</sup> - 120 mm<sup>2</sup>, mounting type: TS32



### Approvals

CE

### General Information

Product Name	CBT300
Connection Method	Bolt Connection
Rating	1000 V/300 A/120 mm <sup>2</sup> /10 Nm
HSN Number	85389000
Standard Packing Qty(in No)	10
Country Of Origin	India
Screw thread	M10

### Dimensions & Weight

Width	40 mm	1.57 inch
Length	96 mm	3.78 inch
Height	52 mm	2.05 inch
Weight of std. Packing Unit	2.77 Kg	

### Material Data

Insulating Material	Melamine
Standard Colour	Khakhi
Colour Variants	Red , Yellow , Blue , Black ,

### Rated Conductor Size

Conductor cross section flexible min	70 mm <sup>2</sup>
Conductor cross section flexible max	120 mm <sup>2</sup>
Conductor cross section solid min	70 mm <sup>2</sup>
Conductor cross section solid max	120 mm <sup>2</sup>

**Ratings - IEC**

Connection in acc. with standard	IEC 60947-7-1
Nominal Voltage $U_n$	1000 V
Nominal Current $I_n$	300 A
Nominal cross section	120 mm <sup>2</sup>
Short-time current	14.40 kA
Rated surge voltage	8 kV
Degree of pollution	3

